

# ISA October 2011–2012 School Report

## Jakarta International School



### Grade 3

Domain		<i>Mathematical Literacy</i>				<i>Reading</i>				<i>Writing Task A</i>				<i>Writing Task B</i>			
		<i>n</i> <sup>3</sup>	<i>mean</i> <sup>4</sup>	<i>S.D.</i> <sup>5</sup>	<i>significance</i> <sup>6</sup>	<i>n</i>	<i>mean</i>	<i>S.D.</i>	<i>significance</i>	<i>n</i>	<i>mean</i>	<i>S.D.</i>	<i>significance</i>	<i>n</i>	<i>mean</i>	<i>S.D.</i>	<i>significance</i>
All	This school <sup>1</sup>	137	320	(93)		134	266	(84)		136	372	(61)		134	373	(47)	
	All other schools	4202	296	(91)	Y	4178	247	(97)	Y	4069	361	(55)	Y	4070	383	(49)	Y
	Other like schools <sup>2</sup>	1134	298	(87)	Y	1126	254	(95)	N	1128	360	(56)	Y	1127	383	(48)	Y
Males	This school	78	328	(91)		77	263	(85)		78	366	(62)		77	370	(47)	
	All other schools	2145	301	(95)	Y	2132	234	(94)	Y	2074	351	(54)	Y	2076	375	(48)	N
	Other like schools	608	303	(90)	Y	606	242	(90)	N	605	348	(53)	Y	606	375	(48)	N
Females	This school	59	309	(94)		57	269	(82)		58	381	(58)		57	377	(47)	
	All other schools	2057	292	(86)	N	2046	261	(98)	N	1995	372	(54)	N	1994	391	(48)	Y
	Other like schools	526	291	(82)	N	520	269	(98)	N	523	374	(56)	N	521	391	(47)	Y
English speaking background	This school	73	303	(87)		71	260	(91)		73	360	(57)		71	366	(49)	
	All other schools	1754	301	(91)	N	1751	269	(96)	N	1657	368	(56)	N	1662	387	(49)	Y
	Other like schools	551	303	(84)	N	549	271	(94)	N	546	364	(57)	N	549	386	(49)	Y
Non-English speaking background	This school	64	339	(96)		63	272	(75)		63	386	(62)		63	381	(44)	
	All other schools	2448	293	(91)	Y	2427	232	(95)	Y	2412	356	(54)	Y	2408	380	(48)	N
	Other like schools	583	292	(89)	Y	577	239	(93)	Y	582	356	(55)	Y	578	379	(48)	N

Note: Mean and standard deviation are reported only where the group number is greater than 10. Comparative data is not provided if the comparison group has less than 100 students. In general, summary statistics of this kind should be interpreted with caution. Results showing a trend should be collected for a minimum of three years before conclusions about school-level performance are drawn.

1. Group 3: between 41% and 55% of students in the school from an English speaking background.
2. "Other like schools" are those with a similar ratio of English speaking background students to non-English speaking background students.
3. n = Number of students
4. Means are expressed as ISA scale scores.
5. S.D. = standard deviation (expressed in ISA scale score points)
6. significance is calculated with a t-test.

At the school's request, 2 students who received individual student reports were not included in the school aggregates.

# ISA October 2011–2012 School Report

## Jakarta International School



### Grade 5

Domain		<i>Mathematical Literacy</i>				<i>Reading</i>				<i>Writing Task A</i>				<i>Writing Task B</i>			
		<i>n</i> <sup>3</sup>	<i>mean</i> <sup>4</sup>	<i>S.D.</i> <sup>5</sup>	<i>significance</i> <sup>6</sup>	<i>n</i>	<i>mean</i>	<i>S.D.</i>	<i>significance</i>	<i>n</i>	<i>mean</i>	<i>S.D.</i>	<i>significance</i>	<i>n</i>	<i>mean</i>	<i>S.D.</i>	<i>significance</i>
All	This school <sup>1</sup>	149	449	(76)		151	418	(80)		149	471	(58)		151	477	(55)	
	All other schools	4564	422	(81)	Y	4551	387	(92)	Y	4435	454	(64)	Y	4439	461	(55)	Y
	Other like schools <sup>2</sup>	1263	430	(77)	Y	1258	399	(90)	Y	1259	459	(61)	Y	1261	462	(54)	Y
Males	This school	78	454	(78)		80	419	(85)		78	457	(53)		80	467	(52)	
	All other schools	2414	425	(83)	Y	2415	382	(94)	Y	2347	442	(65)	Y	2355	454	(56)	Y
	Other like schools	679	436	(79)	N	675	395	(90)	Y	676	448	(60)	N	677	456	(55)	N
Females	This school	71	444	(74)		71	417	(73)		71	487	(60)		71	488	(57)	
	All other schools	2150	419	(78)	Y	2136	393	(89)	Y	2088	467	(60)	Y	2084	468	(53)	Y
	Other like schools	584	423	(74)	Y	583	404	(91)	N	583	473	(60)	N	584	469	(52)	Y
English speaking background	This school	64	442	(72)		64	439	(78)		64	477	(62)		64	482	(57)	
	All other schools	1894	427	(77)	N	1896	415	(88)	Y	1812	467	(62)	N	1817	470	(54)	N
	Other like schools	619	434	(75)	N	619	420	(89)	N	619	467	(60)	N	619	468	(54)	Y
Non-English speaking background	This school	85	455	(78)		87	402	(78)		85	467	(55)		87	473	(54)	
	All other schools	2670	419	(83)	Y	2655	368	(89)	Y	2623	445	(64)	Y	2622	454	(55)	Y
	Other like schools	644	426	(79)	Y	639	380	(88)	Y	640	452	(61)	Y	642	457	(54)	Y

Note: Mean and standard deviation are reported only where the group number is greater than 10. Comparative data is not provided if the comparison group has less than 100 students. In general, summary statistics of this kind should be interpreted with caution. Results showing a trend should be collected for a minimum of three years before conclusions about school-level performance are drawn.

- Group 3: between 41% and 55% of students in the school from an English speaking background.
- "Other like schools" are those with a similar ratio of English speaking background students to non-English speaking background students.
- n = Number of students
- Means are expressed as ISA scale scores.
- S.D. = standard deviation (expressed in ISA scale score points)
- significance is calculated with a t-test.

At the school's request, 1 student who received an individual student report was not included in the school aggregates.

# ISA October 2011–2012 School Report

## Jakarta International School



### Grade 7

Domain		<i>Mathematical Literacy</i>				<i>Reading</i>				<i>Writing Task A</i>				<i>Writing Task B</i>			
		<i>n</i> <sup>3</sup>	<i>mean</i> <sup>4</sup>	<i>S.D.</i> <sup>5</sup>	<i>significance</i> <sup>6</sup>	<i>n</i>	<i>mean</i>	<i>S.D.</i>	<i>significance</i>	<i>n</i>	<i>mean</i>	<i>S.D.</i>	<i>significance</i>	<i>n</i>	<i>mean</i>	<i>S.D.</i>	<i>significance</i>
All	This school <sup>1</sup>	185	525	(82)		175	503	(76)		177	535	(59)		176	522	(57)	
	All other schools	4144	502	(85)	Y	4098	470	(93)	Y	4116	519	(69)	Y	4095	521	(62)	N
	Other like schools <sup>2</sup>	1287	504	(83)	Y	1281	479	(91)	Y	1283	524	(66)	Y	1278	525	(58)	N
Males	This school	87	541	(80)		81	505	(75)		82	532	(65)		82	513	(59)	
	All other schools	2148	507	(88)	Y	2119	462	(93)	Y	2128	504	(69)	Y	2115	512	(63)	N
	Other like schools	676	510	(87)	Y	674	476	(90)	Y	674	514	(67)	Y	671	521	(57)	N
Females	This school	98	510	(82)		94	502	(77)		95	538	(53)		94	529	(54)	
	All other schools	1996	497	(80)	N	1979	478	(93)	Y	1988	535	(65)	N	1980	530	(59)	N
	Other like schools	611	498	(78)	N	607	482	(91)	Y	609	536	(62)	N	607	530	(59)	N
English speaking background	This school	86	507	(77)		83	510	(72)		85	540	(59)		84	512	(64)	
	All other schools	1741	502	(83)	N	1733	496	(86)	N	1740	535	(63)	N	1734	532	(59)	Y
	Other like schools	615	499	(83)	N	611	500	(88)	N	614	534	(62)	N	611	530	(59)	Y
Non-English speaking background	This school	99	540	(84)		92	498	(80)		92	531	(59)		92	531	(48)	
	All other schools	2403	503	(86)	Y	2365	451	(94)	Y	2376	508	(70)	Y	2361	513	(63)	Y
	Other like schools	672	509	(83)	Y	670	459	(89)	Y	669	516	(68)	Y	667	521	(57)	N

Note: Mean and standard deviation are reported only where the group number is greater than 10. Comparative data is not provided if the comparison group has less than 100 students. In general, summary statistics of this kind should be interpreted with caution. Results showing a trend should be collected for a minimum of three years before conclusions about school-level performance are drawn.

1. Group 3: between 41% and 55% of students in the school from an English speaking background.
2. "Other like schools" are those with a similar ratio of English speaking background students to non-English speaking background students.
3. n = Number of students
4. Means are expressed as ISA scale scores.
5. S.D. = standard deviation (expressed in ISA scale score points)
6. significance is calculated with a t-test.

# ISA October 2011–2012 School Report

## Jakarta International School



### Grade 10

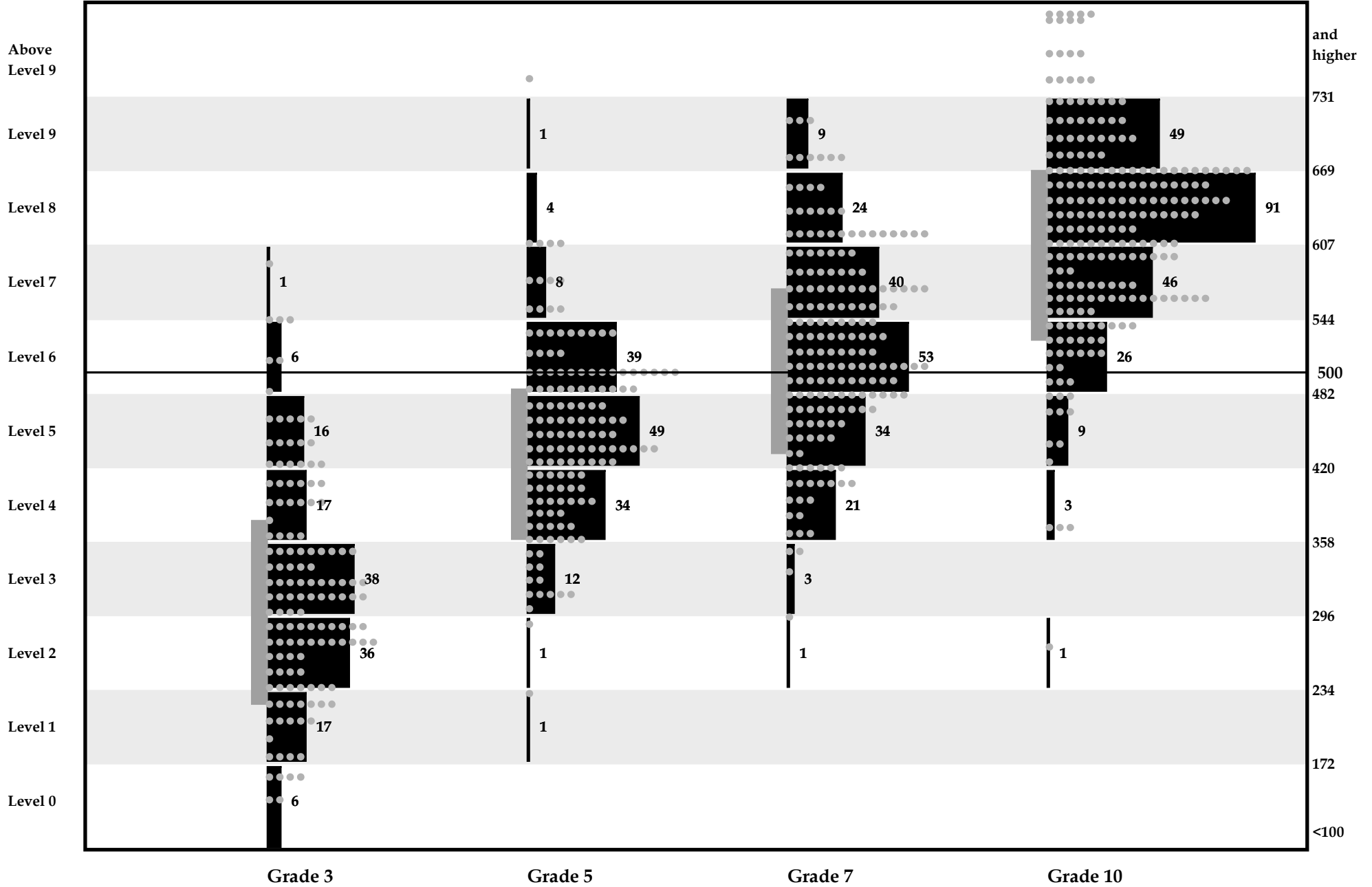
Domain		<i>Mathematical Literacy</i>				<i>Reading</i>				<i>Writing Task A</i>				<i>Writing Task B</i>			
		<i>n</i> <sup>3</sup>	<i>mean</i> <sup>4</sup>	<i>S.D.</i> <sup>5</sup>	<i>significance</i> <sup>6</sup>	<i>n</i>	<i>mean</i>	<i>S.D.</i>	<i>significance</i>	<i>n</i>	<i>mean</i>	<i>S.D.</i>	<i>significance</i>	<i>n</i>	<i>mean</i>	<i>S.D.</i>	<i>significance</i>
All	This school <sup>1</sup>	225	622	(88)		222	592	(70)		225	600	(51)		222	602	(58)	
	All other schools	1921	593	(88)	Y	1909	572	(85)	Y	1917	590	(64)	Y	1910	601	(64)	N
	Other like schools <sup>2</sup>	636	602	(86)	Y	641	577	(82)	Y	637	598	(62)	N	640	606	(66)	N
Males	This school	115	636	(88)		113	582	(71)		115	597	(50)		113	603	(59)	
	All other schools	992	607	(85)	Y	986	569	(83)	N	991	583	(65)	Y	987	600	(67)	N
	Other like schools	342	613	(86)	Y	344	571	(81)	N	342	590	(63)	N	343	601	(69)	N
Females	This school	110	608	(86)		109	602	(68)		110	604	(52)		109	600	(58)	
	All other schools	929	578	(89)	Y	923	575	(88)	Y	926	598	(63)	N	923	602	(60)	N
	Other like schools	294	589	(84)	Y	297	585	(84)	Y	295	606	(61)	N	297	612	(62)	N
English speaking background	This school	68	596	(94)		67	623	(60)		68	601	(52)		67	610	(60)	
	All other schools	772	590	(87)	N	775	606	(73)	Y	773	608	(57)	N	776	622	(58)	N
	Other like schools	269	593	(79)	N	271	605	(74)	Y	270	608	(62)	N	271	622	(62)	N
Non-English speaking background	This school	157	634	(83)		155	578	(70)		157	600	(51)		155	598	(57)	
	All other schools	1147	595	(89)	Y	1132	549	(85)	Y	1142	578	(67)	Y	1132	587	(64)	Y
	Other like schools	367	608	(90)	Y	370	557	(82)	Y	367	590	(61)	N	369	594	(66)	N

Note: Mean and standard deviation are reported only where the group number is greater than 10. Comparative data is not provided if the comparison group has less than 100 students. In general, summary statistics of this kind should be interpreted with caution. Results showing a trend should be collected for a minimum of three years before conclusions about school-level performance are drawn.

- Group 3: between 41% and 55% of students in the school from an English speaking background.
- "Other like schools" are those with a similar ratio of English speaking background students to non-English speaking background students.
- n = Number of students
- Means are expressed as ISA scale scores.
- S.D. = standard deviation (expressed in ISA scale score points)
- significance is calculated with a t-test.

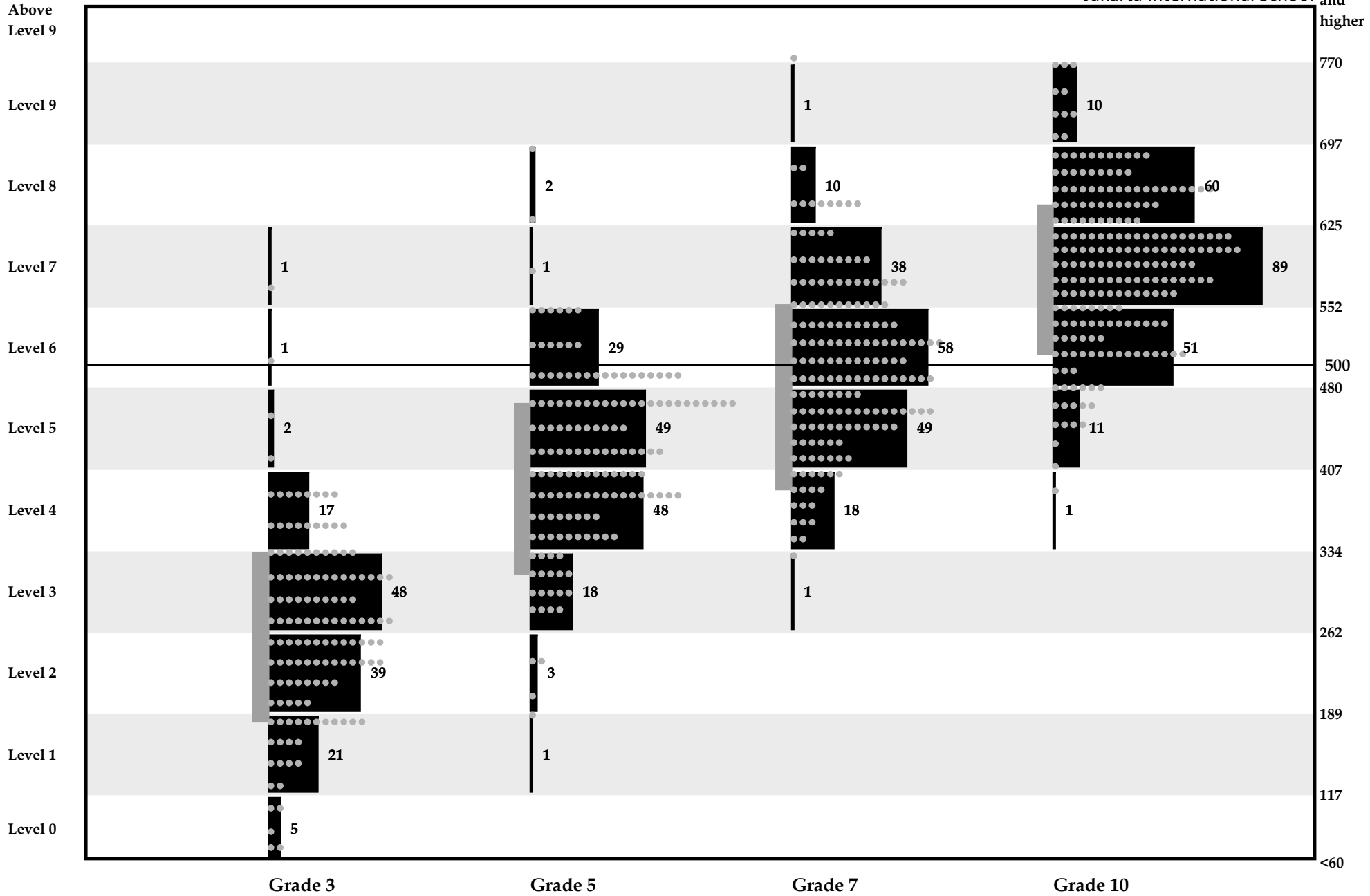
# Mathematical Literacy

Jakarta International School



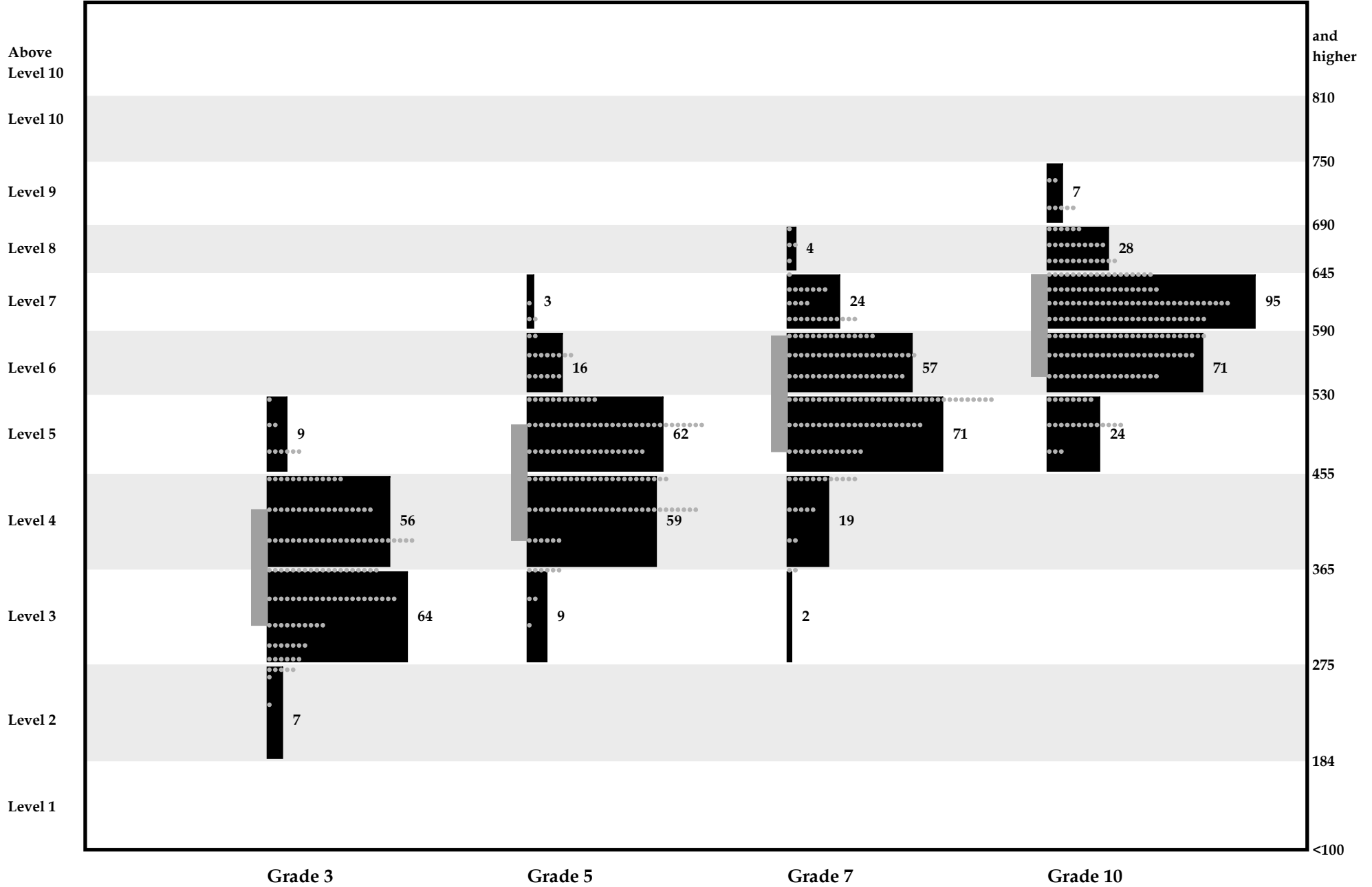
# Reading

Jakarta International School and higher



# Writing A

Jakarta International School



# Writing B

Jakarta International School

