

ISA October 2012–2013 School Report

Jakarta International School



Grade 3

Domain		<i>Mathematical Literacy</i>				<i>Reading</i>				<i>Writing Task A</i>				<i>Writing Task B</i>			
		<i>n</i> ³	<i>mean</i> ⁴	<i>S.D.</i> ⁵	<i>significance</i> ⁶	<i>n</i>	<i>mean</i>	<i>S.D.</i>	<i>significance</i>	<i>n</i>	<i>mean</i>	<i>S.D.</i>	<i>significance</i>	<i>n</i>	<i>mean</i>	<i>S.D.</i>	<i>significance</i>
All	This school ¹	144	342	(78)		139	273	(79)		144	353	(54)		139	379	(53)	
	All other schools	5497	321	(87)	Y	5479	258	(93)	Y	5481	362	(58)	N	5473	388	(51)	N
	Other like schools ²	1614	320	(90)	Y	1605	262	(92)	N	1610	361	(58)	N	1604	389	(52)	Y
Males	This school	74	343	(79)		73	263	(89)		74	345	(55)		73	364	(50)	
	All other schools	2836	327	(91)	N	2830	248	(94)	N	2825	353	(57)	N	2827	379	(51)	Y
	Other like schools	859	329	(93)	N	853	253	(91)	N	856	353	(57)	N	851	381	(51)	Y
Females	This school	70	340	(77)		66	284	(65)		70	362	(53)		66	396	(52)	
	All other schools	2661	314	(81)	Y	2649	268	(91)	N	2656	372	(57)	N	2646	397	(51)	N
	Other like schools	755	309	(85)	Y	752	273	(92)	N	754	370	(58)	N	753	398	(50)	N
English speaking background	This school	73	352	(74)		73	285	(84)		73	356	(55)		73	380	(54)	
	All other schools	2705	324	(85)	Y	2707	278	(88)	N	2703	369	(58)	N	2702	392	(51)	N
	Other like schools	800	321	(88)	Y	799	278	(88)	N	798	364	(59)	N	798	392	(52)	N
Non-English speaking background	This school	69	332	(82)		64	257	(71)		69	347	(53)		64	375	(49)	
	All other schools	2791	318	(88)	N	2771	238	(93)	Y	2777	355	(57)	N	2770	383	(52)	N
	Other like schools	813	318	(92)	N	805	247	(93)	N	811	359	(56)	N	805	387	(51)	N

Note: Mean and standard deviation are reported only where the group number is greater than 10. Comparative data is not provided if the comparison group has less than 100 students. In general, summary statistics of this kind should be interpreted with caution. Results showing a trend should be collected for a minimum of three years before conclusions about school-level performance are drawn.

1. Group 3: between 41% and 55% of students in the school from an English speaking background.
2. "Other like schools" are those with a similar ratio of English speaking background students to non-English speaking background students.
3. n = Number of students
4. Means are expressed as ISA scale scores.
5. S.D. = standard deviation (expressed in ISA scale score points)
6. significance is calculated with a t-test.

ISA October 2012–2013 School Report

Jakarta International School



Grade 4

Domain		<i>Mathematical Literacy</i>				<i>Reading</i>				<i>Writing Task A</i>				<i>Writing Task B</i>			
		<i>n</i> ³	<i>mean</i> ⁴	<i>S.D.</i> ⁵	<i>significance</i> ⁶	<i>n</i>	<i>mean</i>	<i>S.D.</i>	<i>significance</i>	<i>n</i>	<i>mean</i>	<i>S.D.</i>	<i>significance</i>	<i>n</i>	<i>mean</i>	<i>S.D.</i>	<i>significance</i>
All	This school ¹	164	397	(87)		163	348	(77)		165	408	(64)		163	421	(57)	
	All other schools	3810	378	(83)	Y	3792	323	(86)	Y	3796	410	(62)	N	3791	427	(55)	N
	Other like schools ²	960	368	(80)	Y	954	316	(84)	Y	959	408	(60)	N	956	425	(56)	N
Males	This school	83	413	(91)		83	350	(82)		84	398	(65)		83	415	(60)	
	All other schools	1934	385	(84)	Y	1924	315	(89)	Y	1925	401	(63)	N	1926	416	(56)	N
	Other like schools	480	376	(80)	Y	477	307	(84)	Y	479	399	(62)	N	479	412	(55)	N
Females	This school	81	381	(81)		80	346	(72)		81	418	(61)		80	427	(53)	
	All other schools	1876	372	(80)	N	1868	331	(83)	N	1871	420	(59)	N	1865	437	(53)	N
	Other like schools	480	360	(79)	Y	477	325	(83)	Y	480	416	(57)	N	477	438	(55)	N
English speaking background	This school	89	386	(80)		90	345	(79)		90	404	(67)		90	420	(60)	
	All other schools	1864	382	(84)	N	1849	342	(83)	N	1860	418	(63)	Y	1851	432	(54)	Y
	Other like schools	470	373	(79)	N	466	333	(82)	N	469	415	(63)	N	467	429	(57)	N
Non-English speaking background	This school	75	411	(94)		73	351	(74)		75	413	(59)		73	422	(54)	
	All other schools	1945	375	(81)	Y	1942	304	(85)	Y	1935	403	(61)	N	1939	421	(56)	N
	Other like schools	490	363	(80)	Y	488	299	(83)	Y	490	401	(57)	N	489	421	(56)	N

Note: Mean and standard deviation are reported only where the group number is greater than 10. Comparative data is not provided if the comparison group has less than 100 students. In general, summary statistics of this kind should be interpreted with caution. Results showing a trend should be collected for a minimum of three years before conclusions about school-level performance are drawn.

1. Group 3: between 41% and 55% of students in the school from an English speaking background.
2. "Other like schools" are those with a similar ratio of English speaking background students to non-English speaking background students.
3. n = Number of students
4. Means are expressed as ISA scale scores.
5. S.D. = standard deviation (expressed in ISA scale score points)
6. significance is calculated with a t-test.

ISA October 2012–2013 School Report

Jakarta International School



Grade 5

Domain		<i>Mathematical Literacy</i>				<i>Reading</i>				<i>Writing Task A</i>				<i>Writing Task B</i>			
		<i>n</i> ³	<i>mean</i> ⁴	<i>S.D.</i> ⁵	<i>significance</i> ⁶	<i>n</i>	<i>mean</i>	<i>S.D.</i>	<i>significance</i>	<i>n</i>	<i>mean</i>	<i>S.D.</i>	<i>significance</i>	<i>n</i>	<i>mean</i>	<i>S.D.</i>	<i>significance</i>
All	This school ¹	158	452	(70)		159	379	(75)		157	466	(61)		158	466	(52)	
	All other schools	5672	428	(84)	Y	5647	364	(84)	Y	5655	457	(66)	N	5647	468	(60)	N
	Other like schools ²	1673	422	(84)	Y	1664	365	(80)	Y	1670	460	(67)	N	1668	468	(58)	N
Males	This school	88	459	(75)		87	369	(77)		87	452	(60)		86	457	(52)	
	All other schools	2919	439	(85)	Y	2898	358	(82)	N	2906	446	(66)	N	2898	458	(60)	N
	Other like schools	902	435	(84)	Y	892	360	(80)	N	898	449	(66)	N	894	460	(58)	N
Females	This school	70	443	(64)		72	390	(72)		70	483	(58)		72	478	(48)	
	All other schools	2753	417	(82)	Y	2749	370	(85)	Y	2749	469	(64)	N	2749	477	(57)	N
	Other like schools	771	408	(81)	Y	772	372	(81)	N	772	471	(65)	N	774	477	(56)	N
English speaking background	This school	72	449	(64)		72	391	(75)		72	478	(59)		72	469	(60)	
	All other schools	2591	434	(83)	N	2593	384	(81)	N	2588	470	(64)	N	2588	478	(57)	N
	Other like schools	804	428	(84)	Y	802	382	(78)	N	803	466	(64)	N	802	474	(57)	N
Non-English speaking background	This school	85	454	(76)		86	368	(74)		84	455	(61)		85	464	(44)	
	All other schools	3081	423	(85)	Y	3054	346	(83)	Y	3067	447	(66)	N	3059	459	(61)	N
	Other like schools	869	417	(83)	Y	862	350	(79)	N	867	453	(68)	N	866	463	(58)	N

Note: Mean and standard deviation are reported only where the group number is greater than 10. Comparative data is not provided if the comparison group has less than 100 students. In general, summary statistics of this kind should be interpreted with caution. Results showing a trend should be collected for a minimum of three years before conclusions about school-level performance are drawn.

1. Group 3: between 41% and 55% of students in the school from an English speaking background.
2. "Other like schools" are those with a similar ratio of English speaking background students to non-English speaking background students.
3. n = Number of students
4. Means are expressed as ISA scale scores.
5. S.D. = standard deviation (expressed in ISA scale score points)
6. significance is calculated with a t-test.

ISA October 2012–2013 School Report

Jakarta International School



Grade 6

Domain		<i>Mathematical Literacy</i>				<i>Reading</i>				<i>Writing Task A</i>				<i>Writing Task B</i>			
		<i>n</i> ³	<i>mean</i> ⁴	<i>S.D.</i> ⁵	<i>significance</i> ⁶	<i>n</i>	<i>mean</i>	<i>S.D.</i>	<i>significance</i>	<i>n</i>	<i>mean</i>	<i>S.D.</i>	<i>significance</i>	<i>n</i>	<i>mean</i>	<i>S.D.</i>	<i>significance</i>
All	This school ¹	185	497	(81)		187	435	(75)		185	495	(58)		187	471	(61)	
	All other schools	3227	468	(90)	Y	3223	415	(88)	Y	3220	487	(68)	N	3223	490	(63)	Y
	Other like schools ²	995	460	(90)	Y	988	412	(86)	Y	993	490	(67)	N	988	495	(60)	Y
Males	This school	98	508	(78)		98	436	(85)		98	486	(59)		98	457	(58)	
	All other schools	1639	480	(94)	Y	1634	410	(88)	Y	1631	474	(67)	N	1631	479	(63)	Y
	Other like schools	496	469	(96)	Y	489	405	(85)	Y	492	477	(68)	N	488	485	(61)	Y
Females	This school	87	485	(82)		89	434	(63)		87	505	(56)		89	486	(60)	
	All other schools	1588	456	(85)	Y	1589	421	(88)	N	1589	501	(67)	N	1592	500	(60)	Y
	Other like schools	499	450	(84)	Y	499	419	(86)	Y	501	503	(65)	N	500	505	(58)	Y
English speaking background	This school	75	486	(76)		77	459	(73)		75	499	(60)		77	481	(58)	
	All other schools	1369	473	(89)	N	1369	438	(83)	Y	1368	500	(64)	N	1369	500	(59)	Y
	Other like schools	493	458	(91)	Y	490	427	(85)	Y	494	499	(64)	N	490	499	(61)	Y
Non-English speaking background	This school	110	504	(83)		110	418	(72)		110	492	(57)		110	463	(62)	
	All other schools	1858	465	(92)	Y	1854	399	(88)	Y	1852	477	(70)	Y	1854	482	(64)	Y
	Other like schools	502	461	(90)	Y	498	397	(84)	Y	499	480	(70)	N	498	491	(59)	Y

Note: Mean and standard deviation are reported only where the group number is greater than 10. Comparative data is not provided if the comparison group has less than 100 students. In general, summary statistics of this kind should be interpreted with caution. Results showing a trend should be collected for a minimum of three years before conclusions about school-level performance are drawn.

- Group 3: between 41% and 55% of students in the school from an English speaking background.
- "Other like schools" are those with a similar ratio of English speaking background students to non-English speaking background students.
- n = Number of students
- Means are expressed as ISA scale scores.
- S.D. = standard deviation (expressed in ISA scale score points)
- significance is calculated with a t-test.

ISA October 2012–2013 School Report

Jakarta International School



Grade 7

Domain		<i>Mathematical Literacy</i>				<i>Reading</i>				<i>Writing Task A</i>				<i>Writing Task B</i>			
		<i>n</i> ³	<i>mean</i> ⁴	<i>S.D.</i> ⁵	<i>significance</i> ⁶	<i>n</i>	<i>mean</i>	<i>S.D.</i>	<i>significance</i>	<i>n</i>	<i>mean</i>	<i>S.D.</i>	<i>significance</i>	<i>n</i>	<i>mean</i>	<i>S.D.</i>	<i>significance</i>
All	This school ¹	209	531	(81)		209	492	(84)		209	533	(65)		190	518	(56)	
	All other schools	4271	510	(88)	Y	4242	465	(92)	Y	4256	522	(68)	Y	4246	526	(61)	N
	Other like schools ²	1444	509	(89)	Y	1440	471	(91)	Y	1438	525	(66)	N	1437	524	(59)	N
Males	This school	109	534	(77)		109	494	(85)		109	516	(64)		98	499	(53)	
	All other schools	2219	516	(89)	Y	2194	458	(93)	Y	2209	507	(68)	N	2196	515	(62)	Y
	Other like schools	797	516	(90)	Y	795	464	(89)	Y	793	510	(67)	N	793	513	(60)	Y
Females	This school	100	527	(86)		100	490	(83)		100	551	(61)		92	538	(51)	
	All other schools	2052	502	(86)	Y	2048	473	(92)	N	2047	539	(64)	N	2050	538	(57)	N
	Other like schools	647	501	(88)	Y	645	479	(93)	N	645	543	(61)	N	644	539	(56)	N
English speaking background	This school	88	526	(75)		88	499	(79)		88	532	(64)		80	520	(57)	
	All other schools	1840	515	(88)	N	1837	494	(84)	N	1837	537	(65)	N	1836	535	(61)	Y
	Other like schools	691	513	(92)	N	694	495	(91)	N	690	533	(66)	N	691	530	(62)	N
Non-English speaking background	This school	120	535	(86)		120	487	(88)		120	533	(66)		109	516	(55)	
	All other schools	2431	505	(87)	Y	2405	443	(92)	Y	2419	511	(68)	Y	2410	519	(60)	N
	Other like schools	753	505	(87)	Y	746	448	(86)	Y	748	517	(66)	Y	746	519	(56)	N

Note: Mean and standard deviation are reported only where the group number is greater than 10. Comparative data is not provided if the comparison group has less than 100 students. In general, summary statistics of this kind should be interpreted with caution. Results showing a trend should be collected for a minimum of three years before conclusions about school-level performance are drawn.

- Group 3: between 41% and 55% of students in the school from an English speaking background.
- "Other like schools" are those with a similar ratio of English speaking background students to non-English speaking background students.
- n = Number of students
- Means are expressed as ISA scale scores.
- S.D. = standard deviation (expressed in ISA scale score points)
- significance is calculated with a t-test.

ISA October 2012–2013 School Report

Jakarta International School



Grade 8

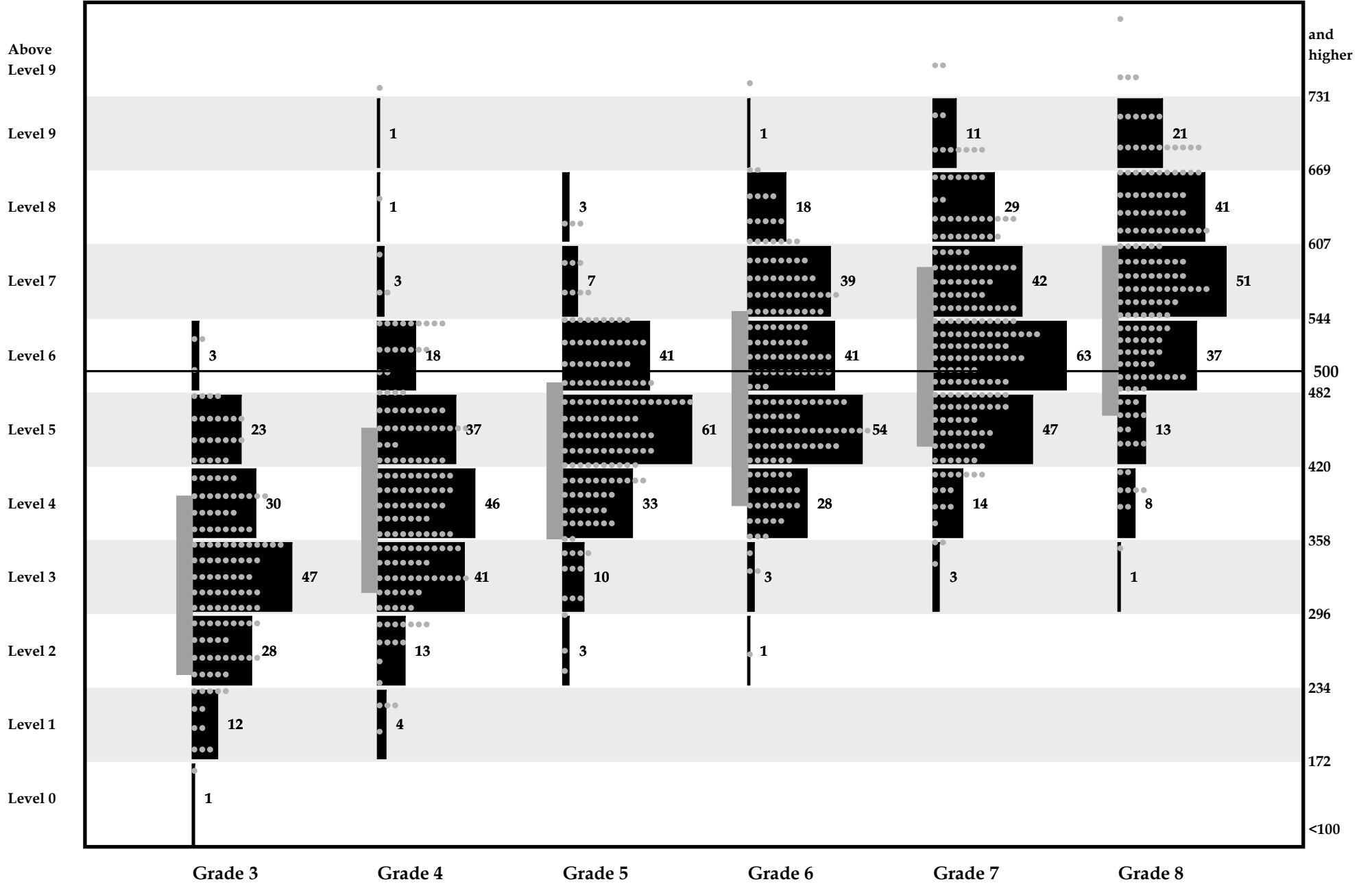
Domain		<i>Mathematical Literacy</i>				<i>Reading</i>				<i>Writing Task A</i>				<i>Writing Task B</i>			
		<i>n</i> ³	<i>mean</i> ⁴	<i>S.D.</i> ⁵	<i>significance</i> ⁶	<i>n</i>	<i>mean</i>	<i>S.D.</i>	<i>significance</i>	<i>n</i>	<i>mean</i>	<i>S.D.</i>	<i>significance</i>	<i>n</i>	<i>mean</i>	<i>S.D.</i>	<i>significance</i>
All	This school ¹	172	575	(85)		176	521	(79)		172	570	(62)		176	548	(53)	
	All other schools	2563	535	(87)	Y	2554	502	(91)	Y	2562	548	(70)	Y	2553	555	(64)	N
	Other like schools ²	976	526	(84)	Y	968	499	(90)	Y	975	543	(70)	Y	968	551	(65)	N
Males	This school	82	585	(79)		83	523	(78)		82	553	(63)		83	545	(62)	
	All other schools	1249	543	(92)	Y	1249	490	(93)	Y	1249	532	(70)	Y	1246	542	(67)	N
	Other like schools	463	534	(90)	Y	460	487	(91)	Y	463	524	(71)	Y	459	535	(68)	N
Females	This school	90	566	(90)		93	518	(79)		90	586	(58)		93	550	(44)	
	All other schools	1314	527	(82)	Y	1305	514	(87)	N	1313	564	(67)	Y	1307	567	(59)	Y
	Other like schools	513	519	(78)	Y	508	510	(88)	N	512	560	(65)	Y	509	565	(58)	Y
English speaking background	This school	77	551	(80)		80	526	(83)		77	576	(56)		80	549	(51)	
	All other schools	1235	537	(85)	N	1227	527	(84)	N	1234	561	(66)	N	1227	564	(63)	Y
	Other like schools	459	528	(86)	Y	454	522	(86)	N	459	553	(66)	Y	455	558	(65)	N
Non-English speaking background	This school	95	594	(85)		96	516	(75)		95	566	(67)		96	546	(55)	
	All other schools	1328	532	(89)	Y	1327	480	(91)	Y	1328	536	(72)	Y	1326	547	(64)	N
	Other like schools	517	525	(83)	Y	514	479	(89)	Y	516	534	(73)	Y	513	544	(64)	N

Note: Mean and standard deviation are reported only where the group number is greater than 10. Comparative data is not provided if the comparison group has less than 100 students. In general, summary statistics of this kind should be interpreted with caution. Results showing a trend should be collected for a minimum of three years before conclusions about school-level performance are drawn.

1. Group 3: between 41% and 55% of students in the school from an English speaking background.
2. "Other like schools" are those with a similar ratio of English speaking background students to non-English speaking background students.
3. n = Number of students
4. Means are expressed as ISA scale scores.
5. S.D. = standard deviation (expressed in ISA scale score points)
6. significance is calculated with a t-test.

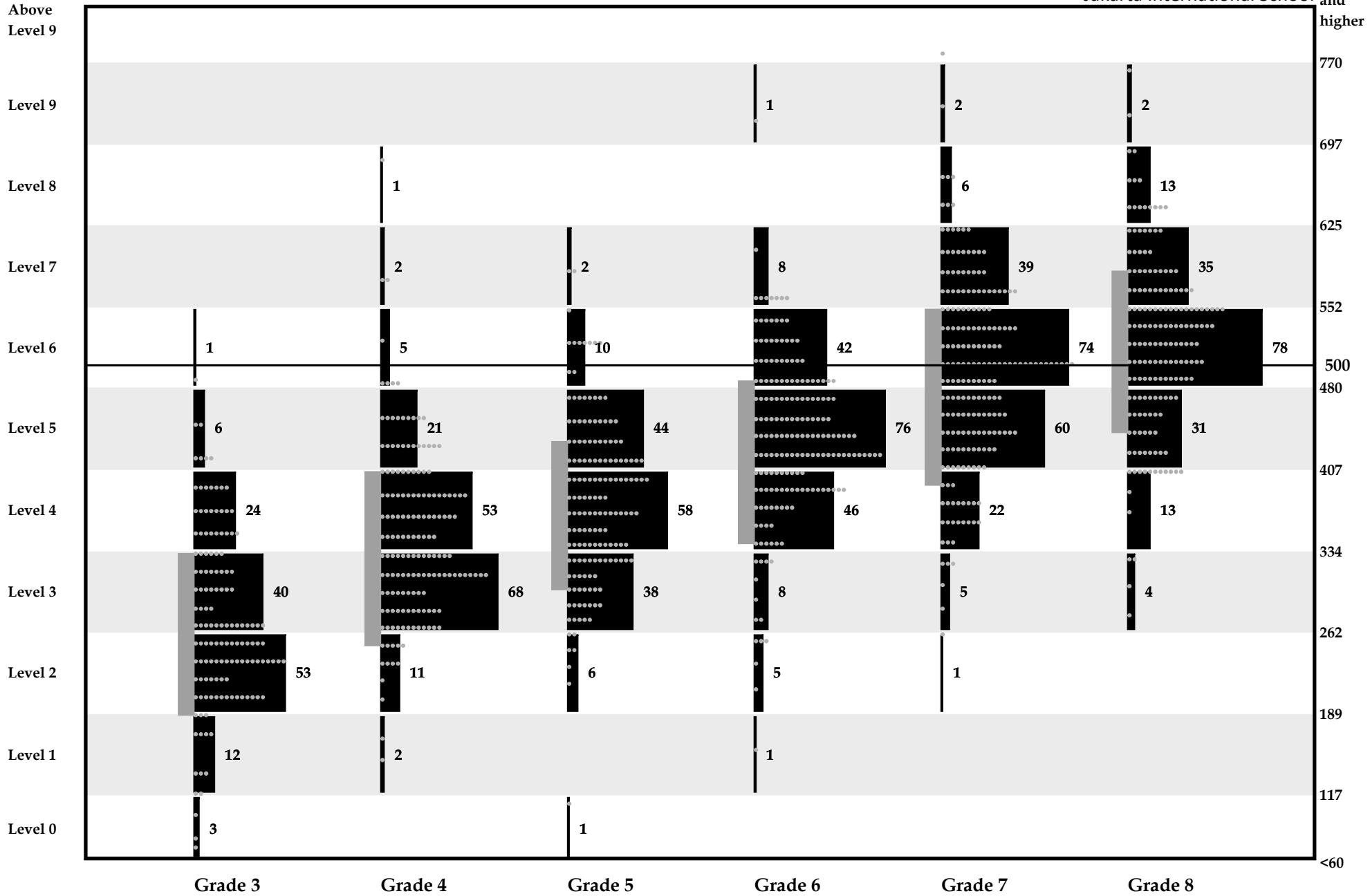
Mathematical Literacy

Jakarta International School



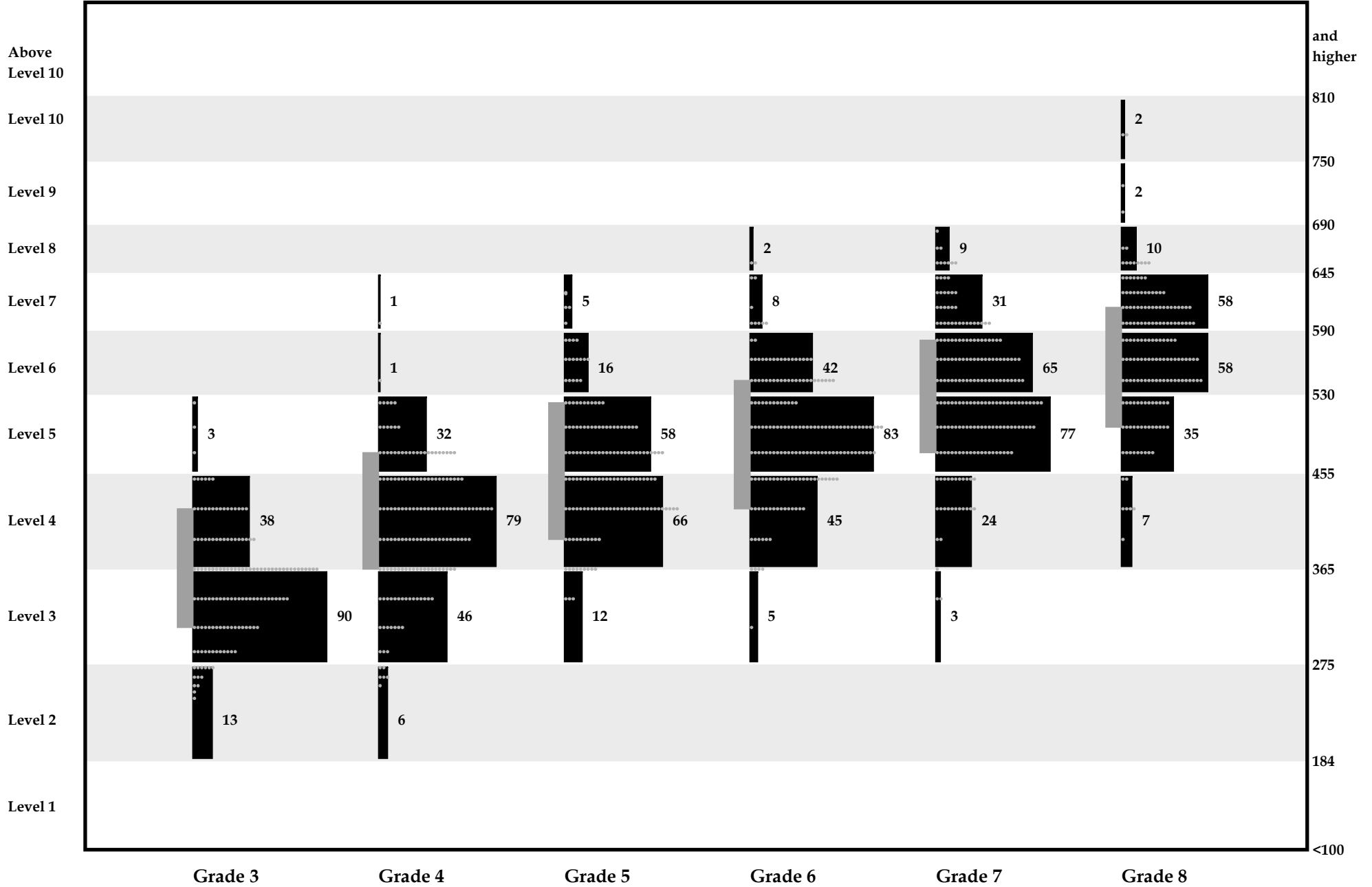
Reading

Jakarta International School and higher



Writing A

Jakarta International School



Writing B

Jakarta International School

