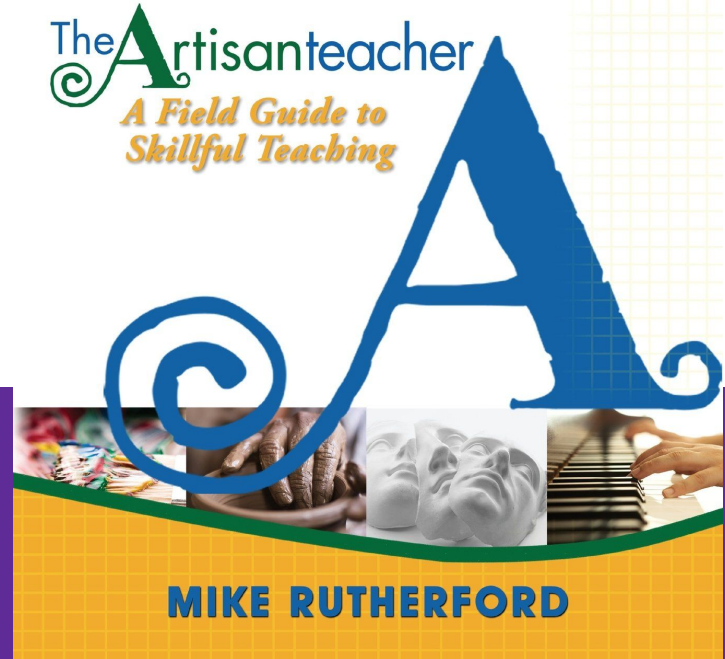


# ***Making Connections***

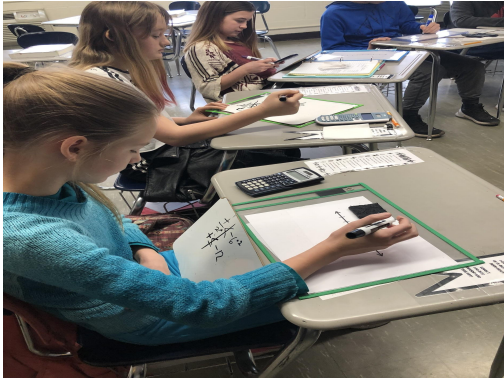
## ***Theme 9***

**John Evans Middle School --  
Potosi R-III School District**

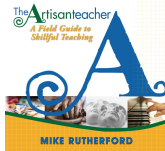
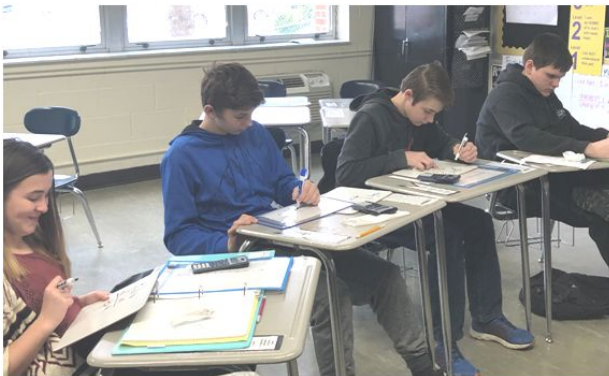
**PLC Year 3 Presentation \* March 8, 2019**



# John Evans Middle School Demographics



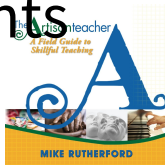
- ❖ 7th & 8th Grade--337 Student Enrollment
- ❖ 93.7% White 6.3% Minority
- ❖ Attendance as of January 31, 2019--  
95.43%
- ❖ 100% receive Free & Reduced Lunch  
Status



**Theme 9:  
Connection**

# Why is *Connection* an important theme?

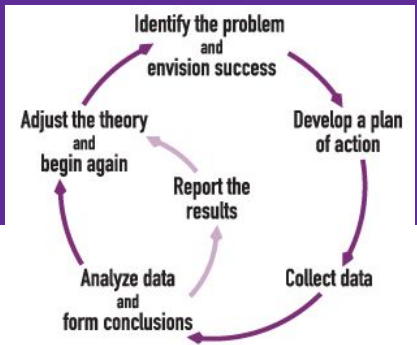
- ❖ Connection-- “The ability of the teacher to establish a mental link between the intended learning and past learning experiences or experiences.”
- ❖ Rutherford stated, “Of all of the twenty-three themes, Connection is perhaps the single theme that is most directly aimed at how the human brain naturally learns” (p. 65).
- ❖ Making prior connections is especially important for students in poverty.



# Action Research: Making connections at JEMS



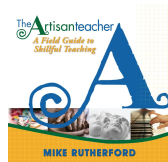
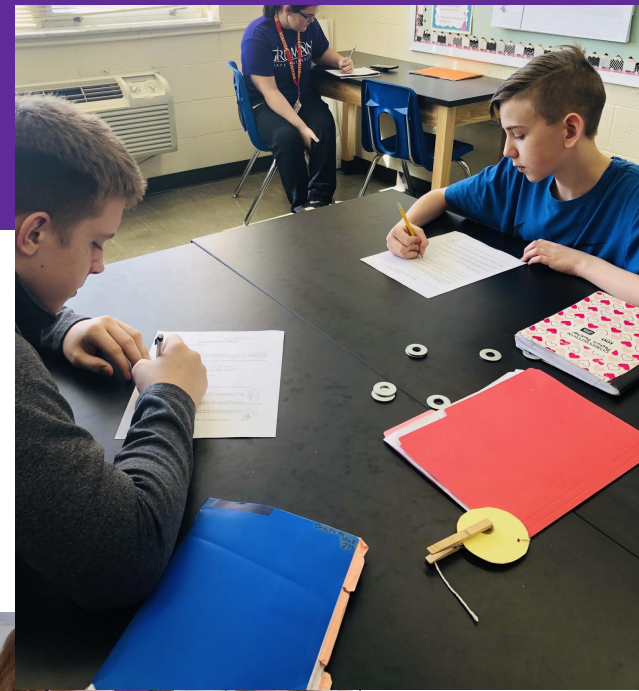
# Action Research: Making connections at JEMS



- ❖ Selected as a Missouri Model District (MMD) school, working to integrate Developing Assessment Capable Learners (DACL) practices while also balancing other initiatives (PLC, MRI, RTI)

# Making Connections at JEMS

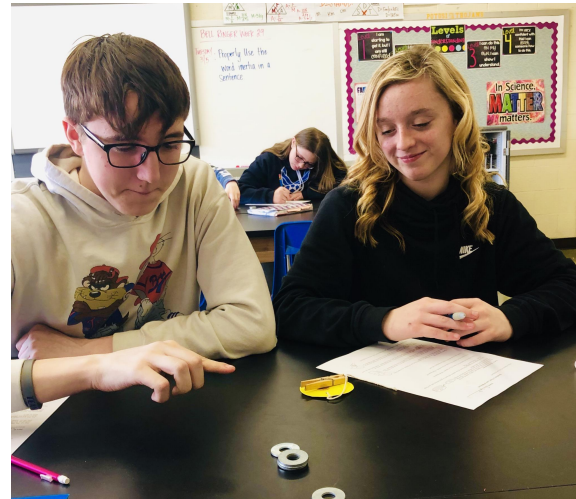
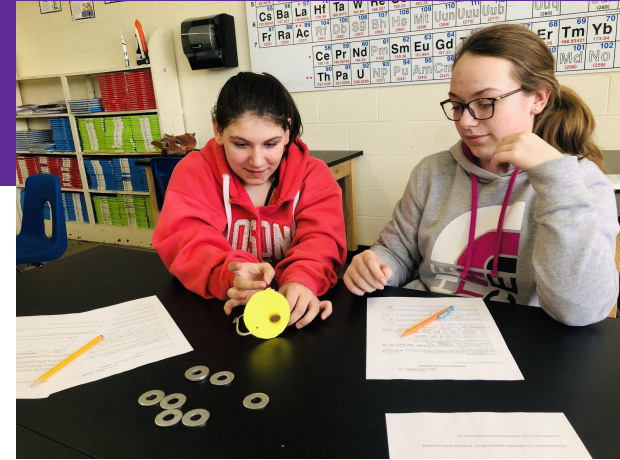
- ❖ Cross curriculum units with ELA & Social Studies
- ❖ New Model Guidance format
- ❖ Providing more authentic learning experiences
- ❖ Accessing prior knowledge



**Theme 9:  
Connection**

# Making Connections at JEMS

- ❖ TAP (Trojan After school Program)
- ❖ Collaborative seating in all classrooms
- ❖ Trojan Time (Response to Intervention)
  - Tutoring
  - Enrichment



# How do we hope to improve *Connection* in the future at JEMS?

## Tips for making connections

- ❖ “The connection must first exist in the mind of the learner.”
  - Incorporate more audio/visual or technology
- ❖ “The connection should be made actively.”
  - Math manipulatives?
- ❖ How can we teach students about the United Kingdom when many of our students haven’t been outside of Missouri?

