

Bowie MS PLC Site

<https://bit.ly/bowieplc>

Be sure to look for regular updates on each page!

Bowie PLC Home CubConnection Team Time Math RLA Science Social Studies Arts & Electives New Teacher Mentorship Resources



BOWIE PLC

<https://bit.ly/bowieplc>
(case sensitive - all lowercase)

(Bowie MS Site + Staff Handbook: bit.ly/BMS-SH)

Must be signed into @irvingisd account!!

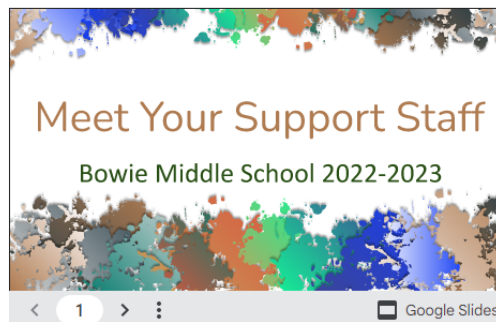
News:

Cub Connection Cycle 7 runs through Friday, May 12.

We are wrapping up hours offered for HB4545. Be sure to log your hours if you used that option from Ms. Bankhead and Ms. Scruggs.

DDI talks will be crucial next year.

*Schedule a PLC chat with Mrs. Stearns so that we can modify the process to fit your team!



3 Big "Look-Fors":

COLLABORATIVE PLANNING

 DOLs

HIGH QUALITY INSTRUCTION

 Structured Academic Conversations

POSITIVE SCHOOL CULTURE

 CKH

Our school is our PLC - professional learning community. We meet with our PLT - professional learning team - to collaborate on the daily work of achieving high levels of learning for ALL students.

CFAs are the engine which drives PLT collaboration. Data and teacher/student work samples guide our teamwork for Tier 1, Tier 2, and Tier 3 instruction.

Cub Connection Page

Links on page:

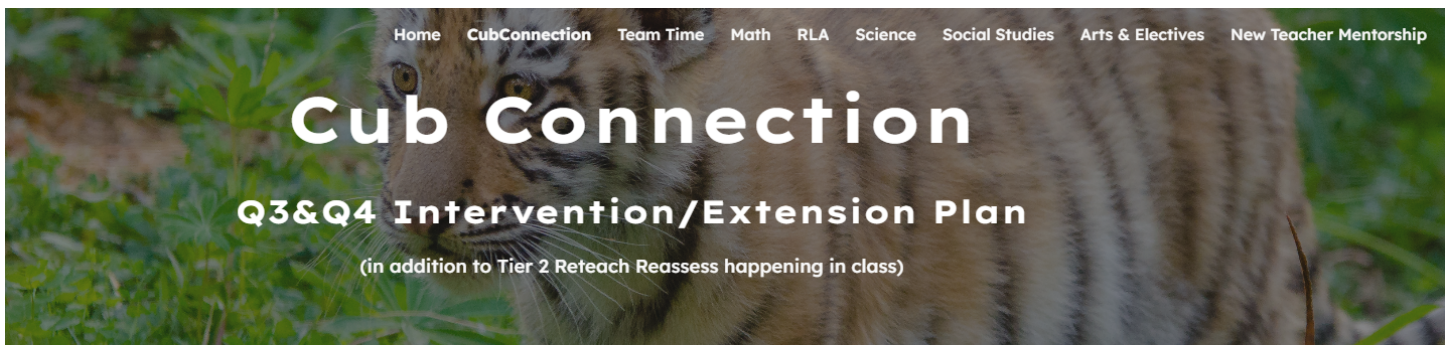
[CUB CONNECTION Dates](#)

[CUB CONNECTION Weekly Set Up](#)

[CUB CONNECTION Lessons](#)

Here's a walkthrough video for Enriching Students rostering:

https://drive.google.com/file/d/18rulqR73BmbcdKITxKxzoqZckEeUujZt/view?usp=share_link



Feedback Form - share your insights with us!

Cub Connection Intervention Cycles
 Calendar includes time frames for Common Assessments. Teams should assess and analyze data before the end of these weeks.

TAG: **IC1 IC2 IC3 IC4 IC5** (Tag in groups of 10) Number of Groups will depend on data. Tag your groups by name (IC3self, IC3teacher, IC3teacher) depending on with whom you share intervention.

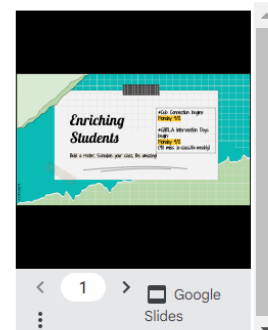
CC Intervention Cycle 1	September 12 - October 21 (6 Weeks)
TAG: IC1	
CC Intervention Cycle 2	October 24 - November 18 (4 Weeks)
TAG: IC2	



During PLC time, use Enriching Students program in Launchpad to assign your roster to intervention and extension teachers.

Staff Assignment by Staff Name: <https://bit.ly/CC22BMS>

	Monday	Tuesday	Wednesday	Thursday
	RLA	RLA	Math	Math
6th gr. Intervention	1. Arvidson - from Tirado 2. Cohen (GT) 3. Eggemeyer 4. Estrello (ELs) 5. (Jimenez) Dominey - From Eggemeyer 6. Mayo - from Eggemeyer 7. Bankhead (T3) 8. Balderas 9. Montgomery	1. Arvidson 2. Cohen (GT) 3. Eggemeyer 4. Estrello (ELs) 5. (Jimenez) Dominey 6. Mayo 7. Bankhead (T3) 8. Balderas 9. Montgomery (Dyslexia)	1. Allmon (Nash) 2. Davis (Medley) 3. Medley (Medley) 4. Nash (Nash) 5. O'Brien (O'Brien) 6. Piland (Valdez) 7. Valdez (Valdez) 8. Scruggs (T3) (Scruggs) 9. Arvidson (Valdez) 10. Folse (Valdez)	1. Allmon 2. Davis 3. Medley 4. Nash 5. O'Brien 6. Piland 7. Valdez 8. Scruggs (T3) 9. Arvidson 10. Folse



Weekly Assignment Links

Reminders:

1. Math and Reading teachers change all IXL students' login password to Bowie
2. Review and ADJUST your rosters every time you receive a new student so that they are properly placed.
3. Update your sub plans (see below)

[Click here for teacher assignments \(Cub Connection Weekly Set Up\)](#) [Click here for YAG](#)

SEL LESSON LINKS

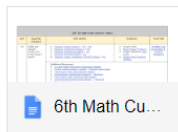
SEL Lesson Links May 15 - 16			
Week 6.5	Monday May 15	Tuesday May 16	Wed
Link:	6th,7th,8th CKH May Inte... <i>Slides: Please do the activities on slides 1-5)</i>	6th,7th,8th CKH May Integrity <i>Slides: Please do the activities on slides 5-8)</i>	6th,7th,8 <i>Slides: Pleas slides 9-11)</i>

**Substi
Instruc
CUE
CONNEC
ADVISORY
9:45AM - 1**

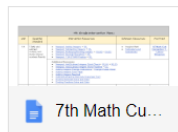
Thank you for subbin
Our schedule include
advisory period in be
3rd period - from 9:4!
At the end of 2nd per

CubConnection Lesson Menus

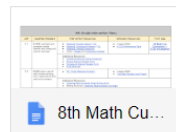
6th Math



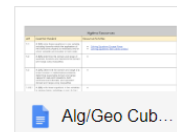
7th Math



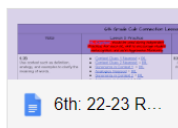
8th Math



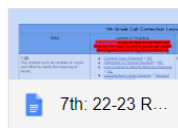
Alg/Geom



6th RLA



7th RLA



Links to Intervention Lesson Menus:

- [6th Grade RLA Intervention Menu](#)
- [7th Grade RLA Intervention Menu](#)
- [8th Grade RLA Intervention Menu](#)

- [6th Grade Math Intervention Menu](#)
- [7th Grade Math Intervention Menu](#)
- [8th Grade Math Intervention Menu](#)
- [Alg/Geom Grade Math Intervention Menu](#)

Team Time Page

Be sure to look for regular updates on each page!

Home CubConnection Team Time Math RLA Science Social Studies Arts & Electives New Teacher Mentorship

PLT Team Time

Templates and Presentations to support Collaborative Teams

in collective cycles of inquiry and action research

Book Mrs. Stearns: <https://rstearns.youcanbook.me>

Remember to open each team session with your collective commitments (norms)

1. and Good Things.

Document your team's daily agenda in the Instructional Planning Calendar "Team Time What Now/What Next"

2. sections.

2. sections.

3 Big "Look-Fors":

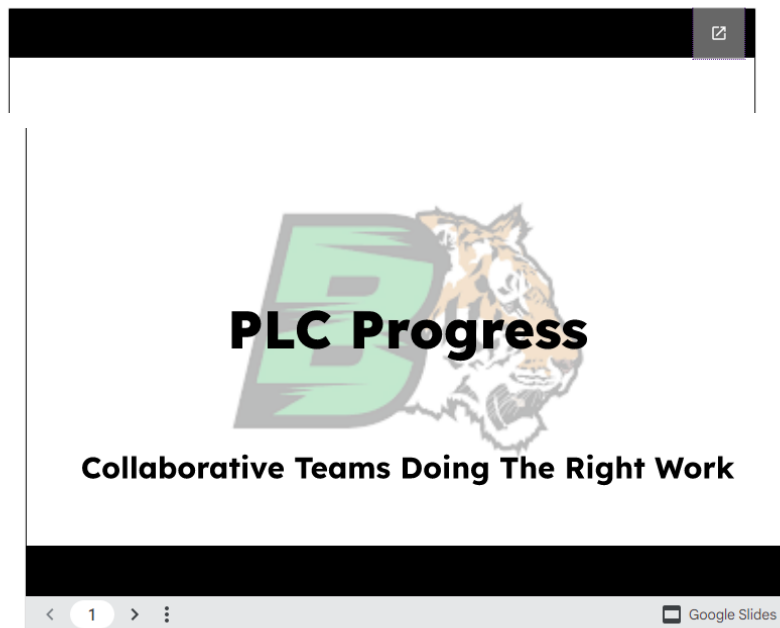
Collaborative Planning

High Quality Instruction

Positive School Culture

(DOLs, Structured Academic Conversations, CKH)

CFAs are the engine which drives PLC. CFAs guide our collaborative teamwork.



2022-2023 The PLC Process

TEAMS and Instructional Coaches		BOY PLC Pre	
TEMPLATES	EXAMPLES	6th Grade Team	7th Grade
Norms, Expectations, Roles - Team Protocol	Norms, Expectations, Roles - Team Protocol Exemplary Know/Show Charts		
6th Six Weeks IPC Template Purposeful Planning "Unpacking Essential Standards" link "Instructional Planning Calendar" link Teacher Exemplar - DDI link			

EXAMPLES [Science](#) [Math](#) [RLA](#) [Social Studies](#) [ESF Notes](#) [Electives](#)

Team Artifacts

[PLC Unit Guide](#)

[Lesson Plan Template](#)

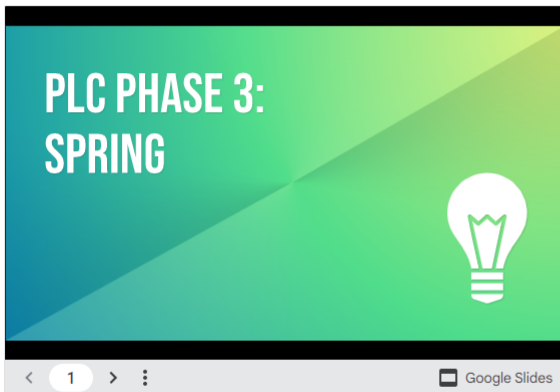
[PLC Data Action Plan Template](#)

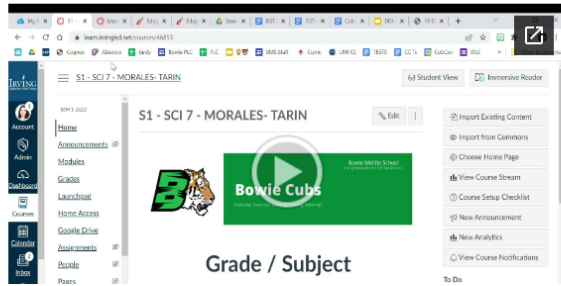
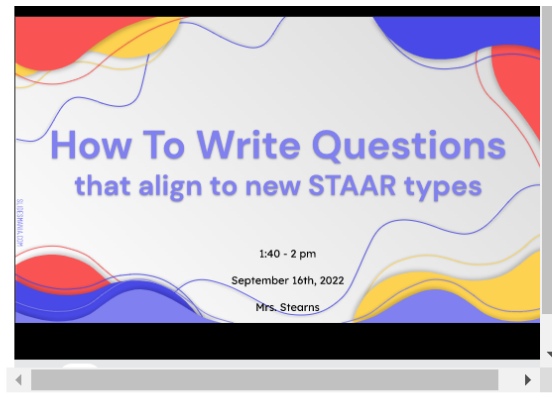
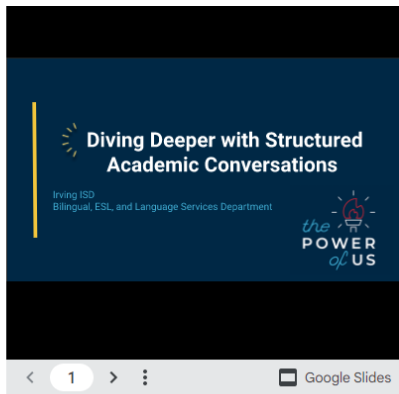
[Campus Data Goals](#)

Non-Negotiables:

- Unpacking Essential Standards
- SMART Goals
- CFAs -> ESF Data Protocol
- Common Demonstration of Learning (DOL) statements

Guiding Presentations





Master Template Document

docs.google.com/spreadsheets/d/1...

Bowie Middle School

MISSION	VISION	VALUES
Our mission is to ensure	Our vision is an engaged	Our values are: POSITIVE

bit.ly/bowieedugence

Creating a CFA in Edugence.mp4

<p>Goal: keep pace, stay 1-2 weeks ahead in DOLs, pacing calendar, assessment due dates, DDI chats</p> <p>Goal: learn how to assess Essential Standards efficiently, including tweaking assessments provided in curriculum</p> <p style="text-align: center;">WORK BACKWARDS!</p>	
<p>If I want to get this done in PLC...</p>	<p>I have to do this beforehand in conference...</p>
<p>Align Learning Experiences to Essential Standard</p>	<p>Read over the learning experiences in the curriculum ("Internalize the Unit" - Subjects In Action aka SWAGs)</p>
<p>Calibrate proficiency on Essential Standard CFA - our team will decide what</p>	<p>Read over the Know/Show chart and student work</p>