



KCSD96

ISAT Test Scores Trend Analysis 2002-2013

Kildeer Countryside School District 96 2013 ISAT Data and Student Achievement Trends

Areas assessed:

Grade 3 - Reading and Math

Grade 4 - Reading, Math and Science*

Grade 5 - Reading and Math

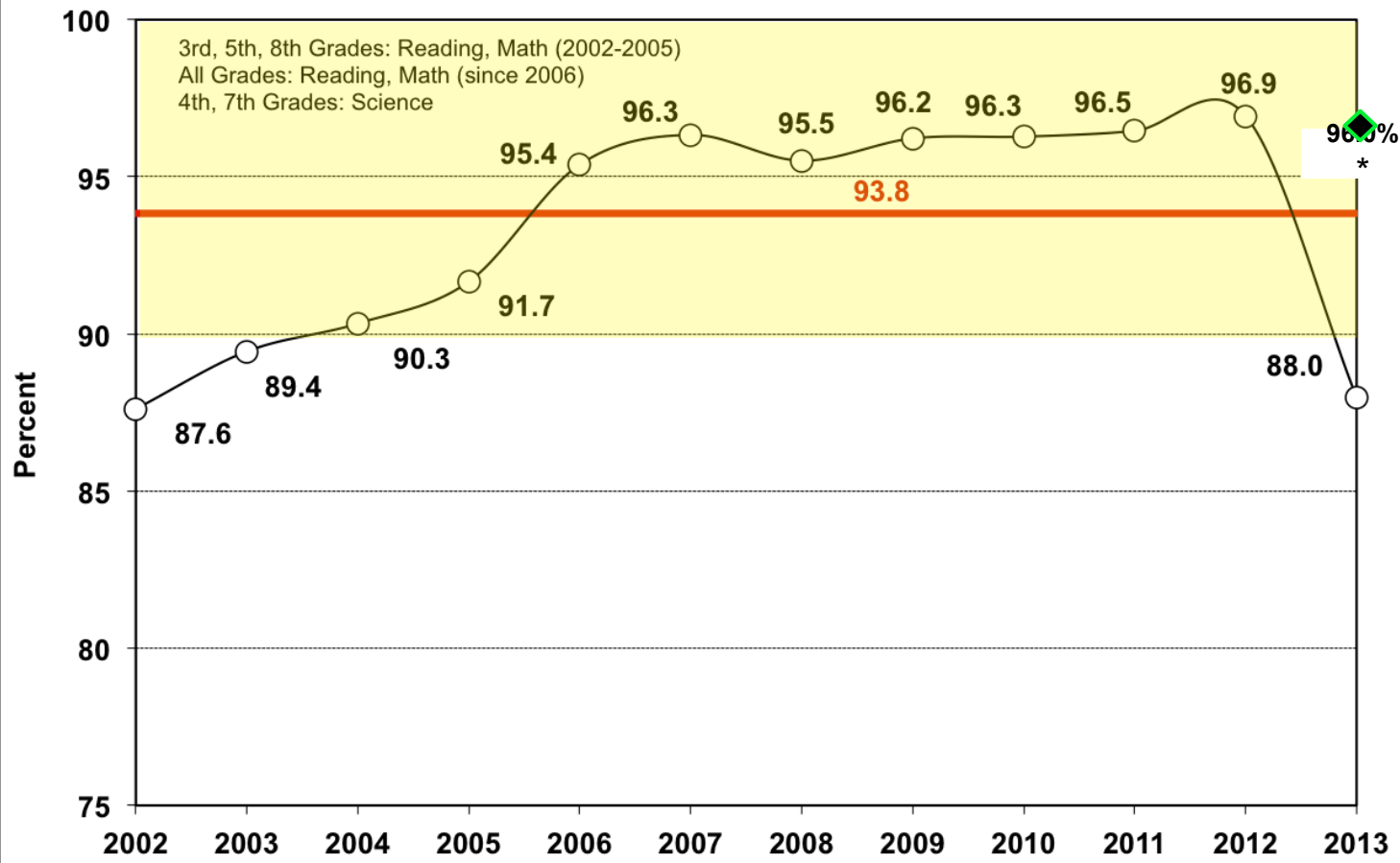
Grade 6 - Reading and Math

Grade 7 - Reading, Math and Science*

Grade 8 - Reading and Math

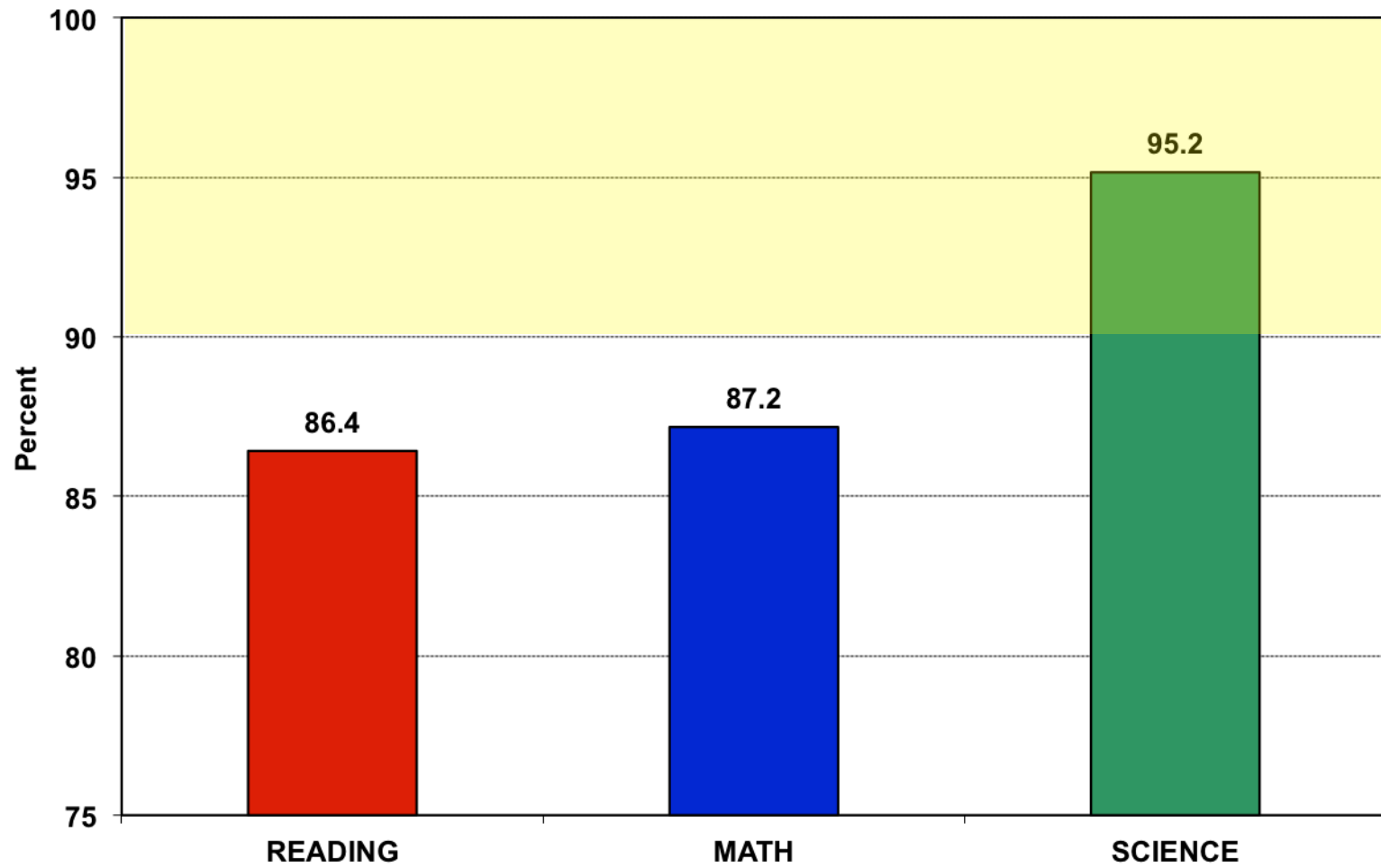
***Not part of AYP determination or part of District Totals**

District AVERAGE Score 2002-2013 (Average through 2012)

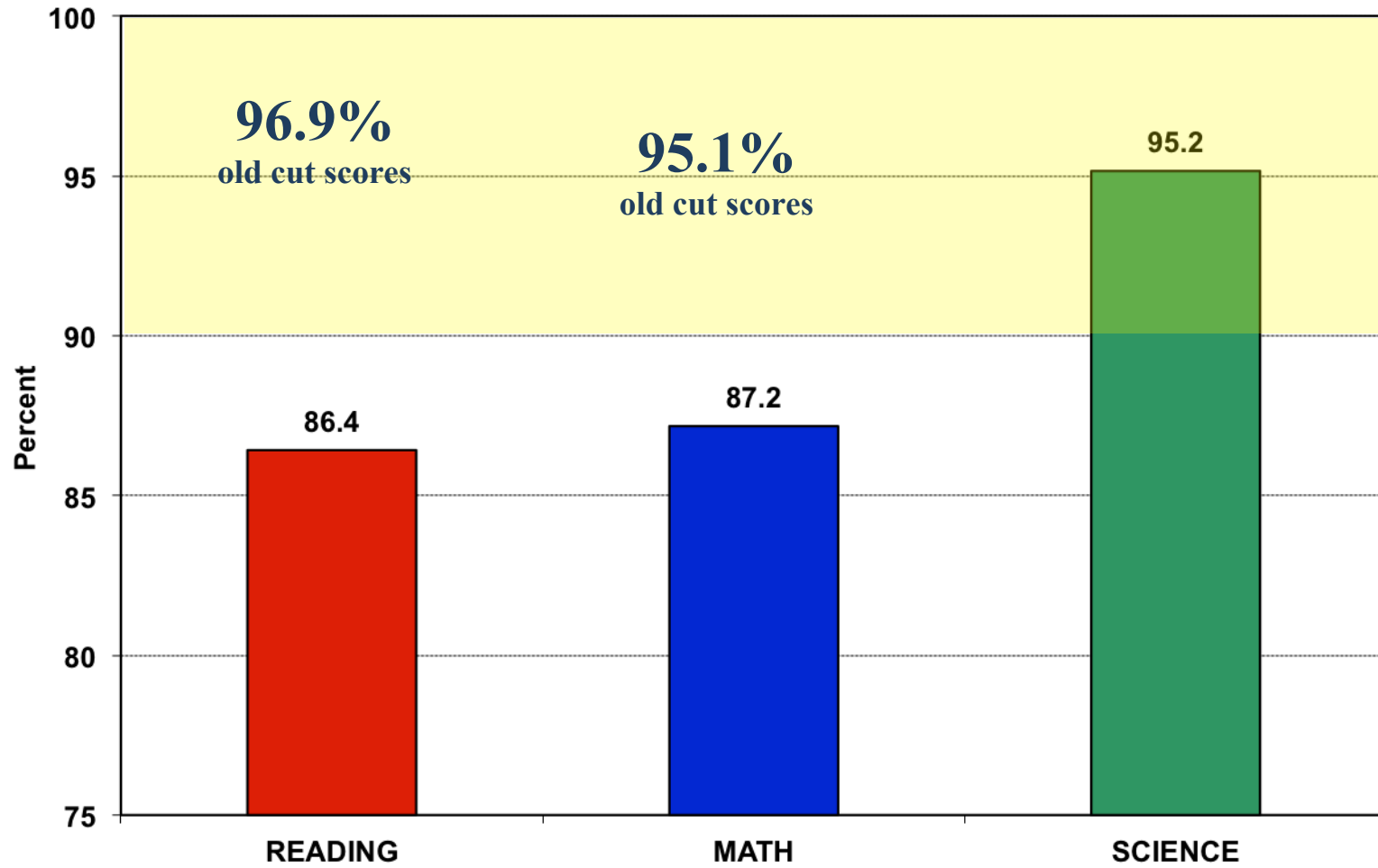


◆ *Percentage Using Old Cut Score

District Subject Scores: YR 2013



District Subject Scores: YR 2013



District 96 vs. State Averages – ISAT tests only

Based on IL School Report Card Data

	District 96 Overall Average	Overall State Average	Difference
2009	96.3%	79.8%	16.5%
2010	96.3%	80.9%	15.4%
2011	96.8%	82.0%	14.8%
2012	96.6%	82.1%	14.5%
2013	88%*	58.8*	29.2%

*Based on Preliminary District/State Data



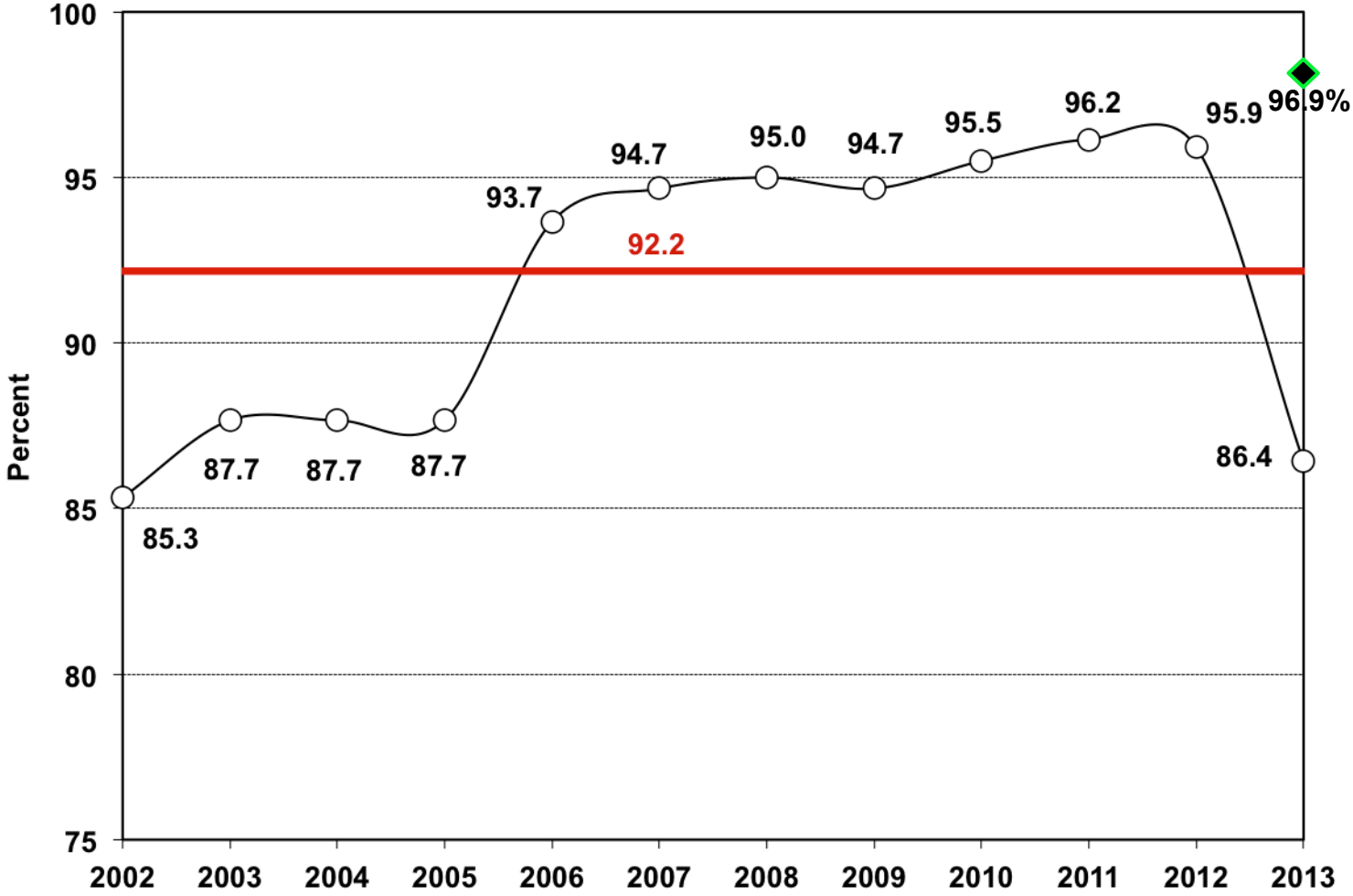
READING Test Scores

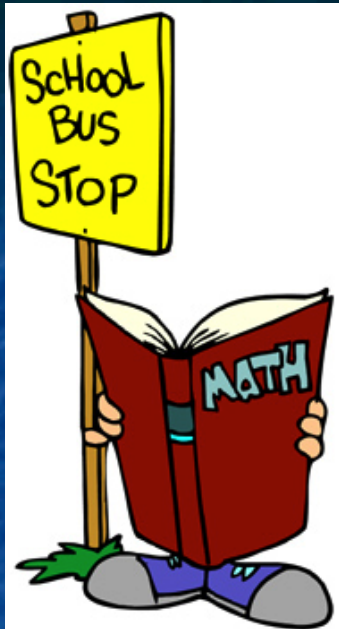
Composite Scores

2002 to 2005: 3rd, 5th, 8th Grades
since 2006: All Grades

ISAT District **READING** Scores 2002-2013

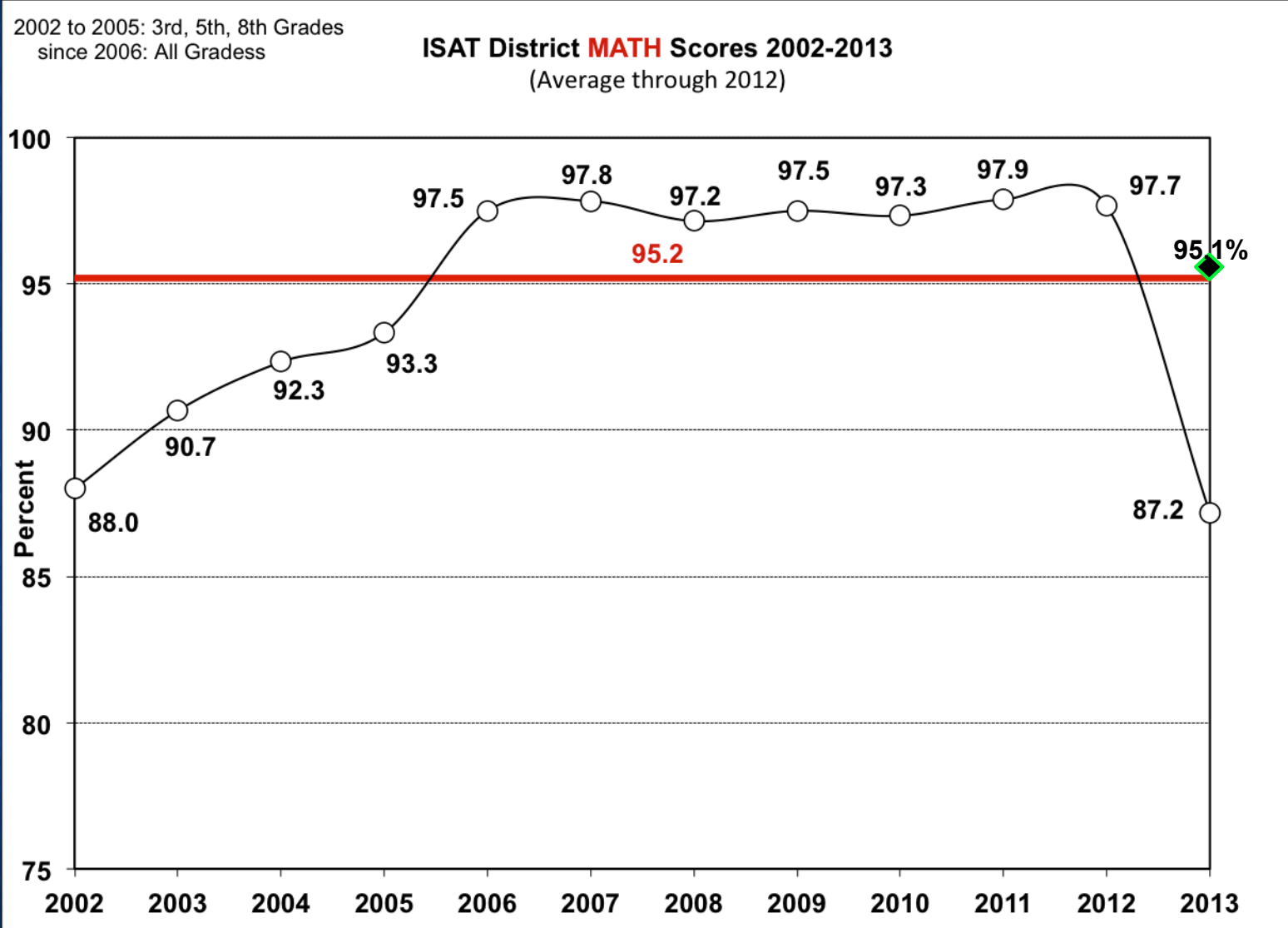
(Average through 2012)





MATH Test Scores

Composite Scores

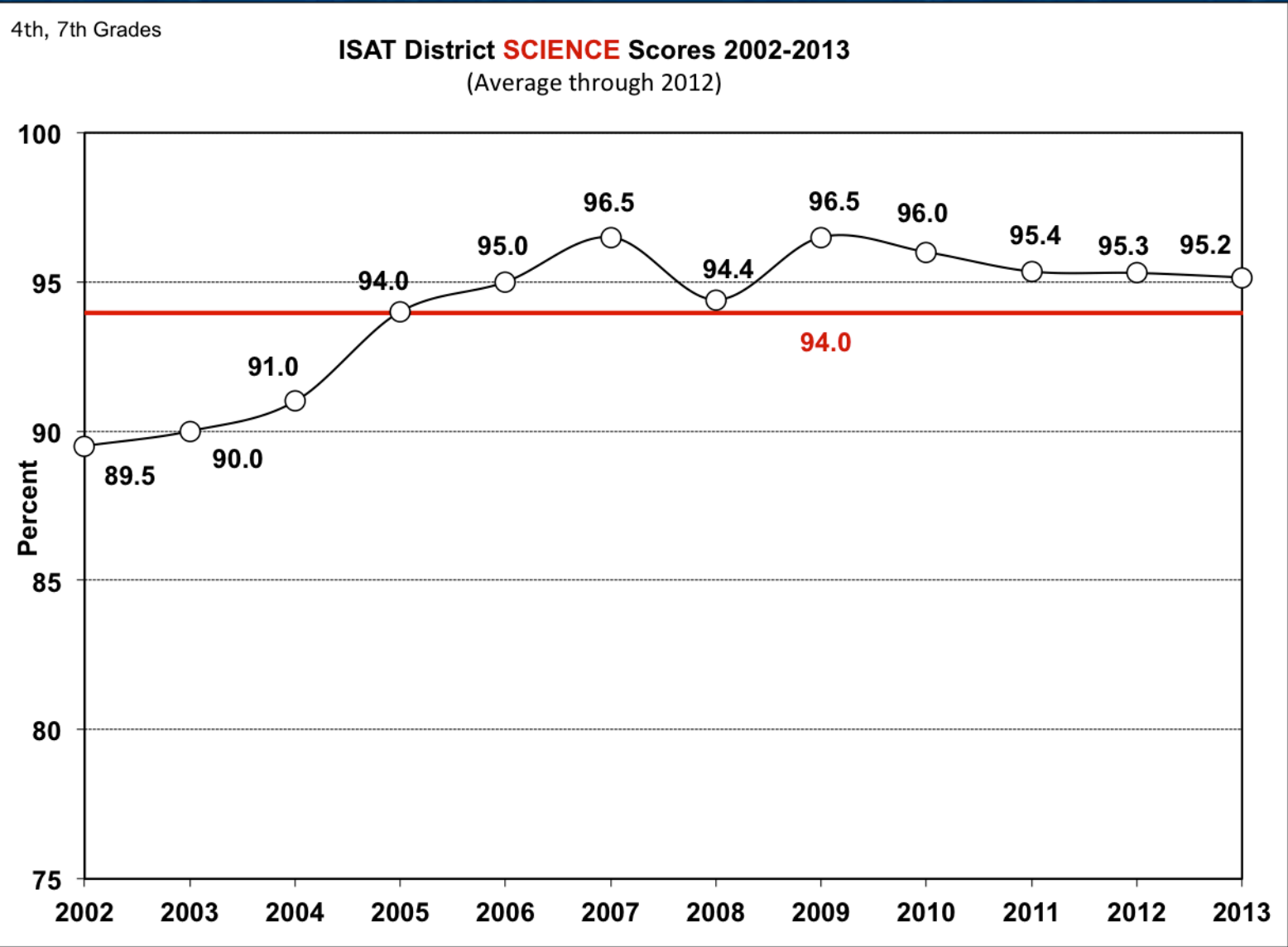




SCIENCE

Test Scores

Composite Scores

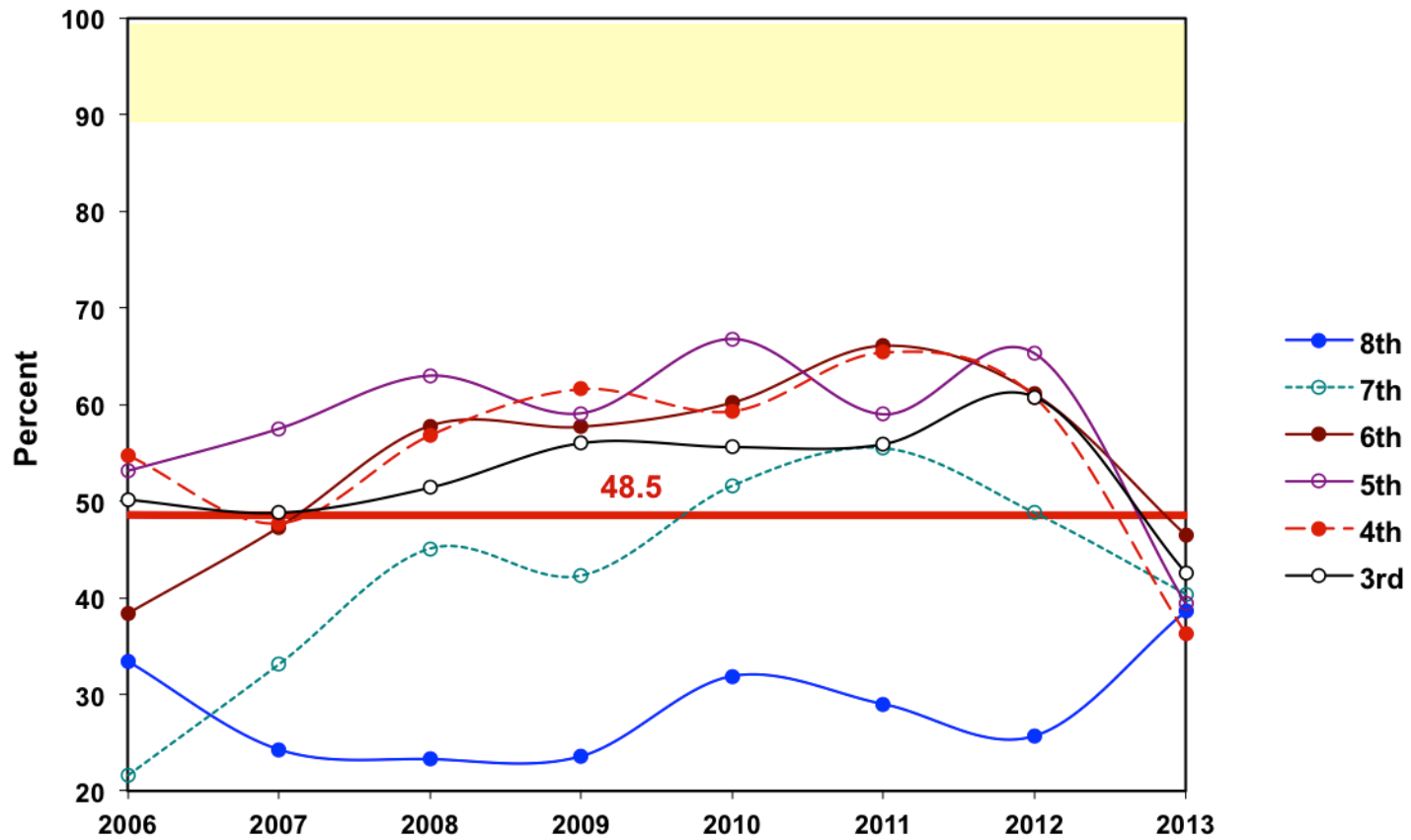


Questions??



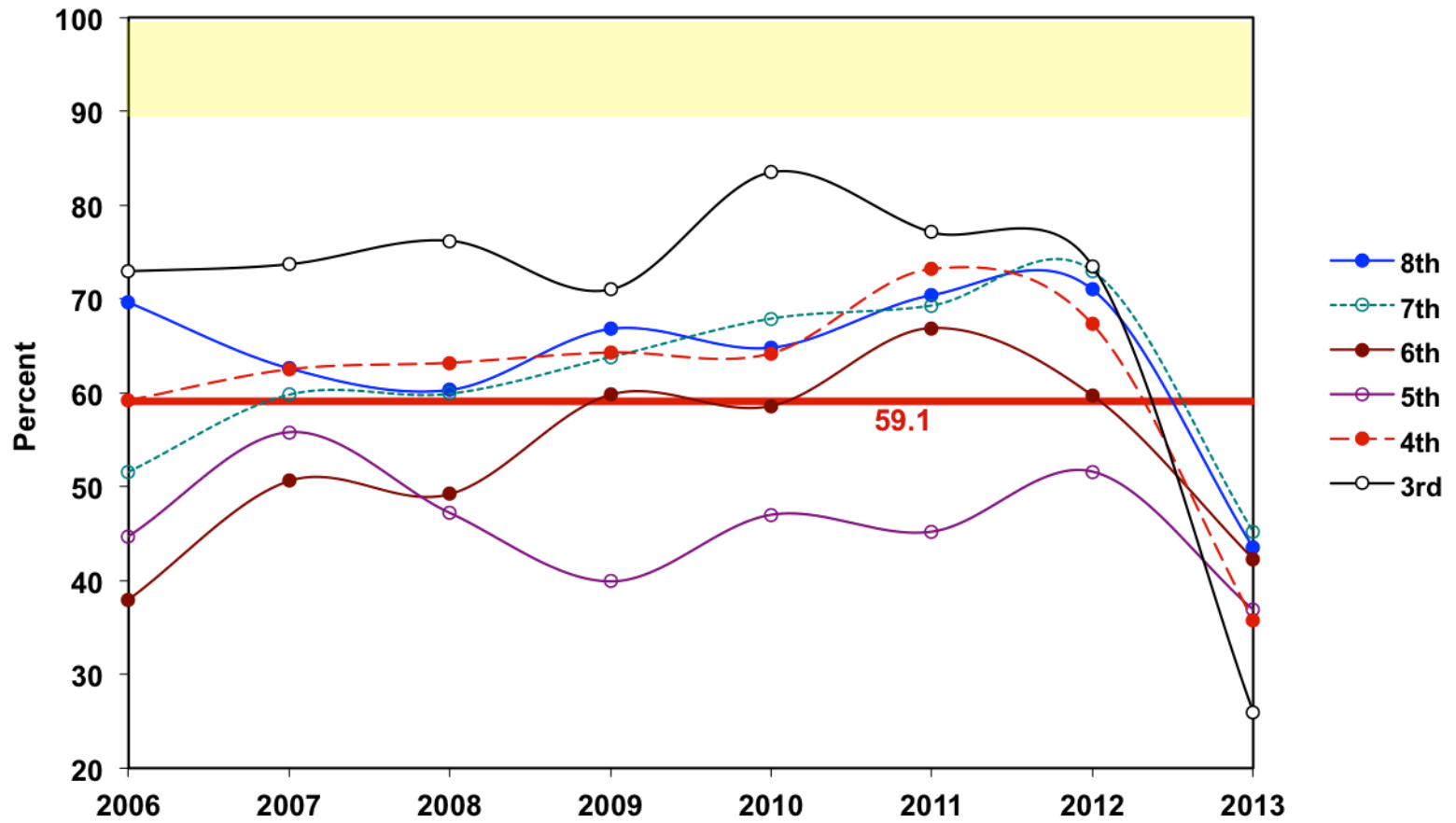
Composite Scores Across All Schools

READING - Percent of Students Who **Exceed**
State Learning Standards 2006-2013



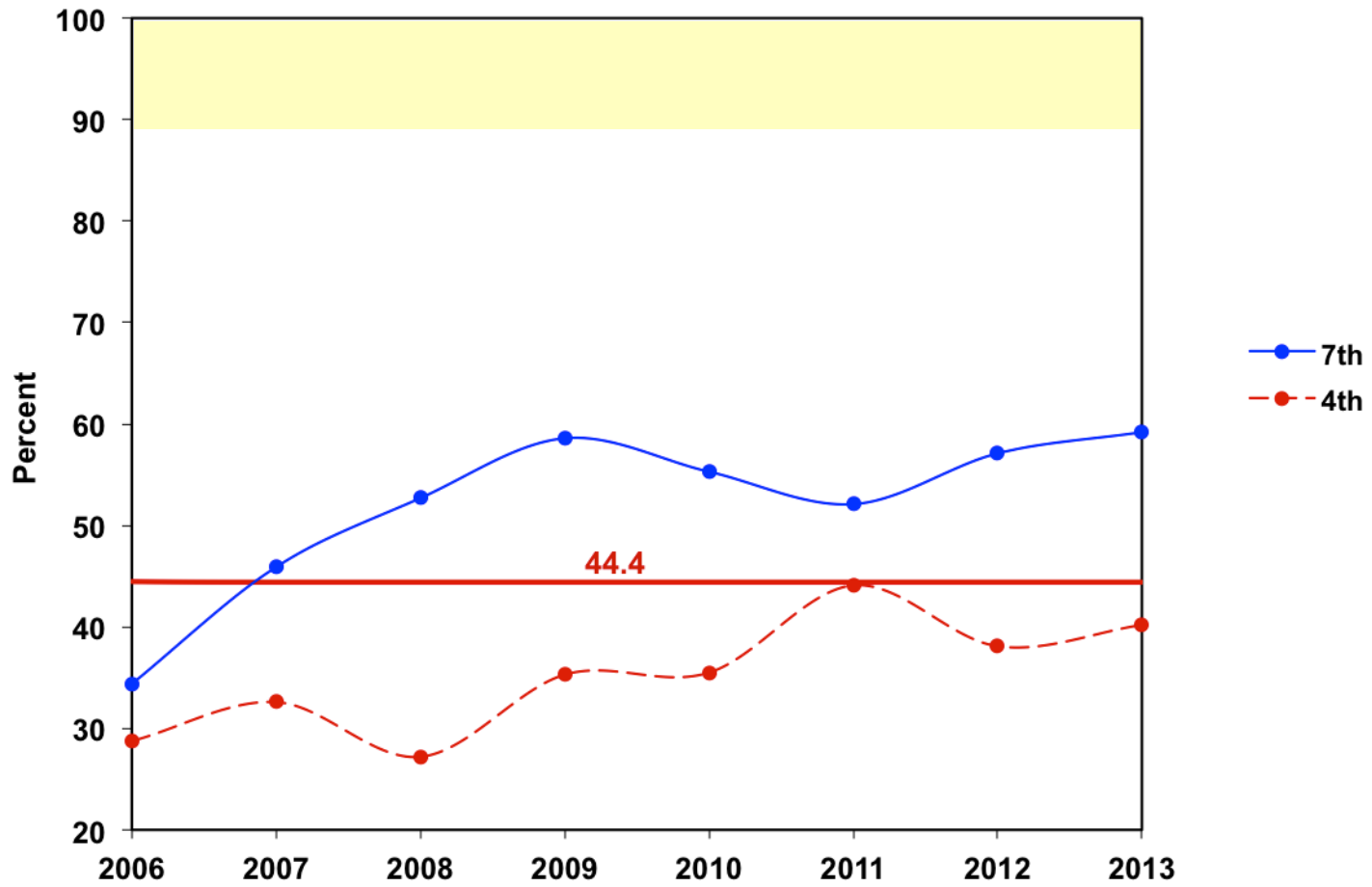
Composite Scores Across All Schools

MATH - Percent of Students Who **Exceed**
State Learning Standards 2006-2013



Composite Scores

SCIENCE - Percent of Students Who **Exceed**
State Learning Standards 2006-2013

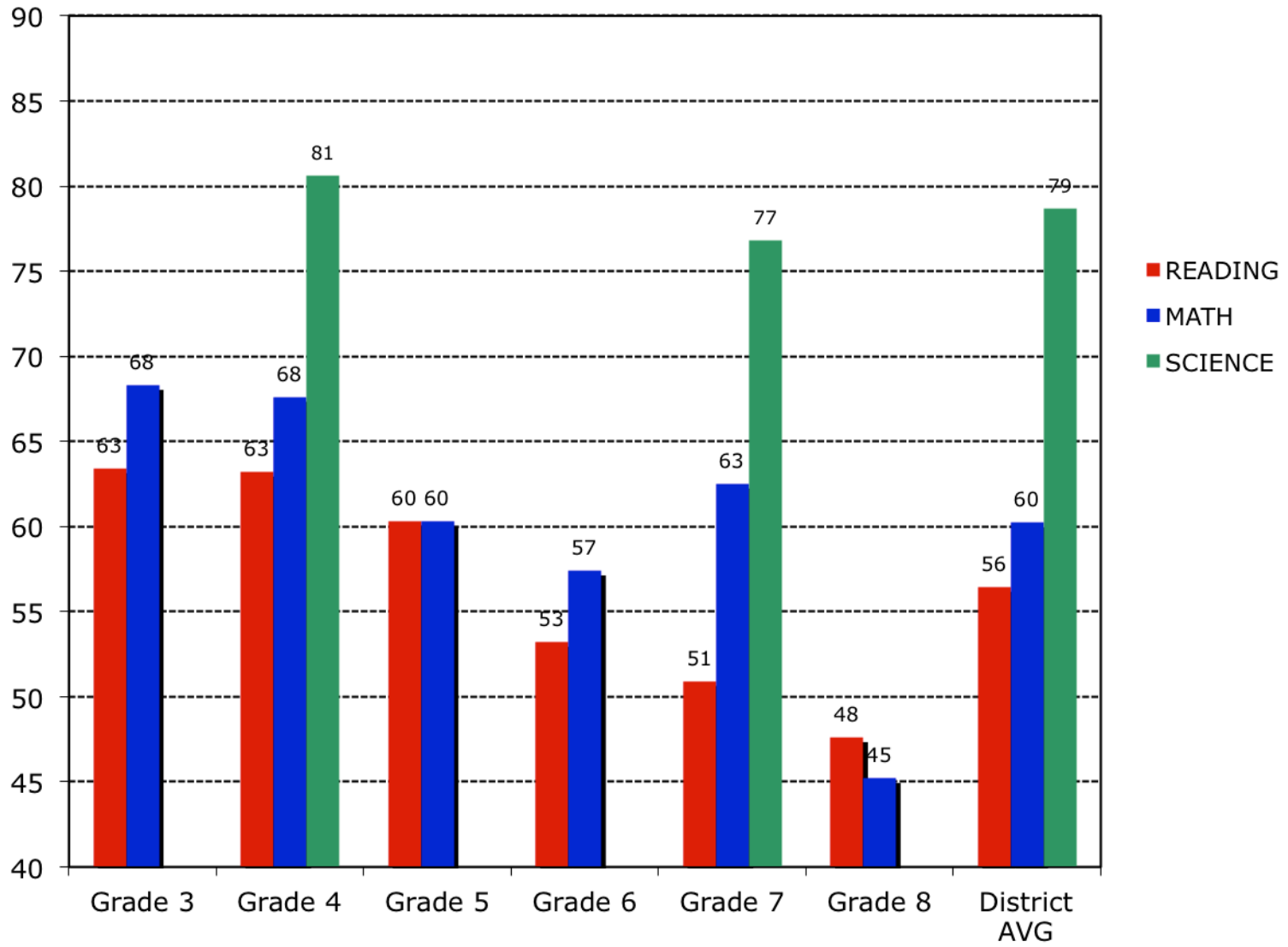




IEP
ELL
Low
Income

Test Scores

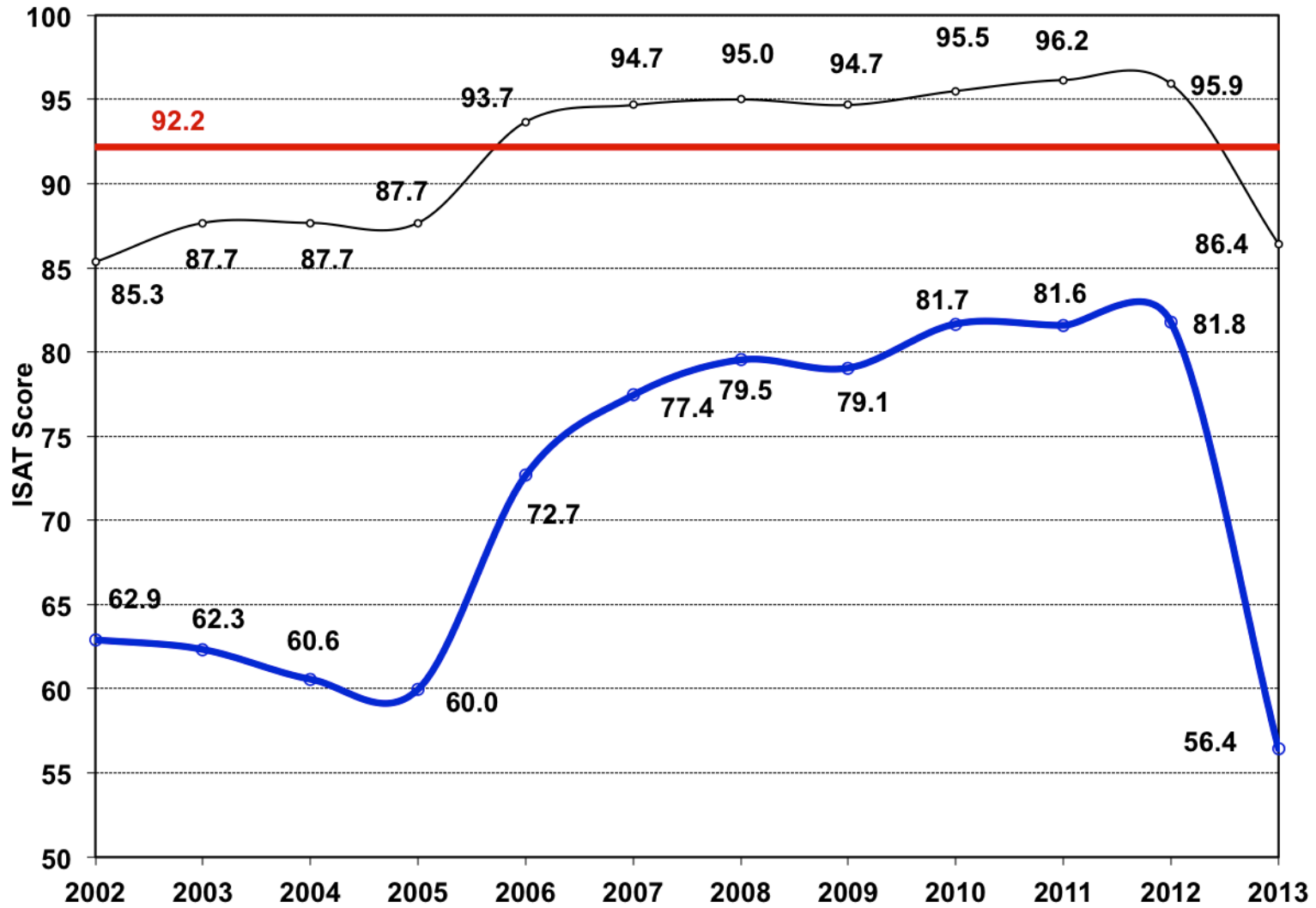
IEP Scores by Grade - 2013



District ISAT and IEP READING Scores 2002-2013

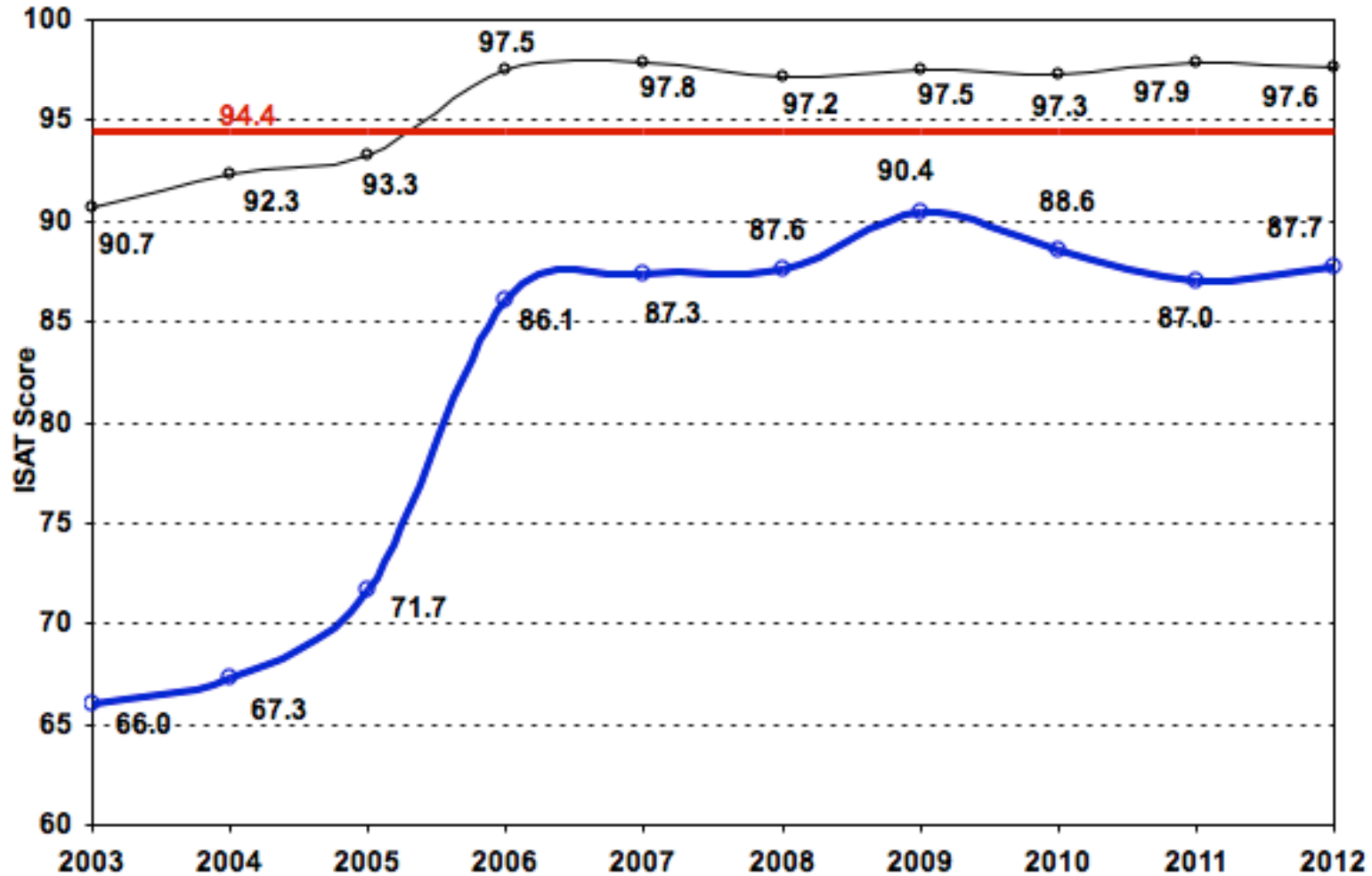
2002-05: 3rd, 5th, 8th Grades
2006 on: All Grades

(Average through 2012)



District ISAT and IEP MATH Scores 2003-2012 (Average through 2011)

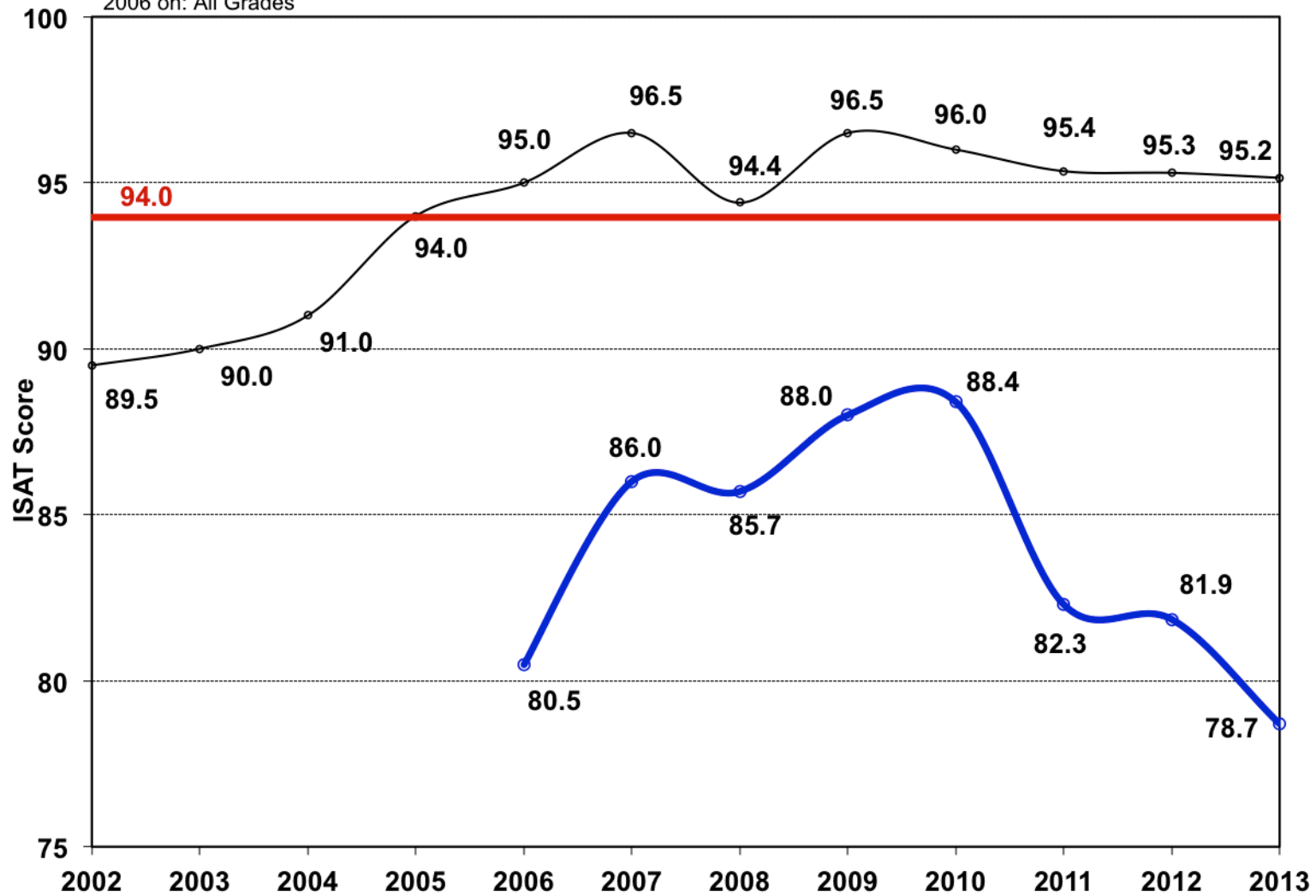
2001-05: 3rd, 5th, 8th Grades
2006 on: All Grades



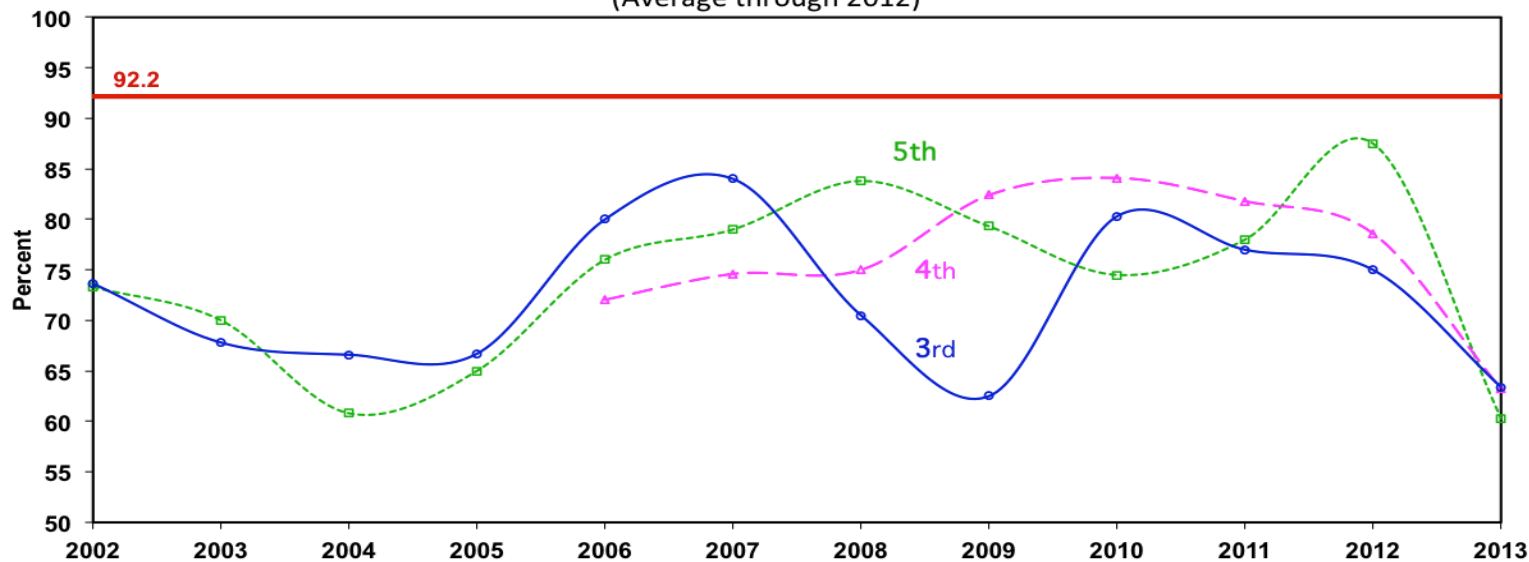
District ISAT and IEP SCIENCE Scores 2006-2013

(Average through 2012)

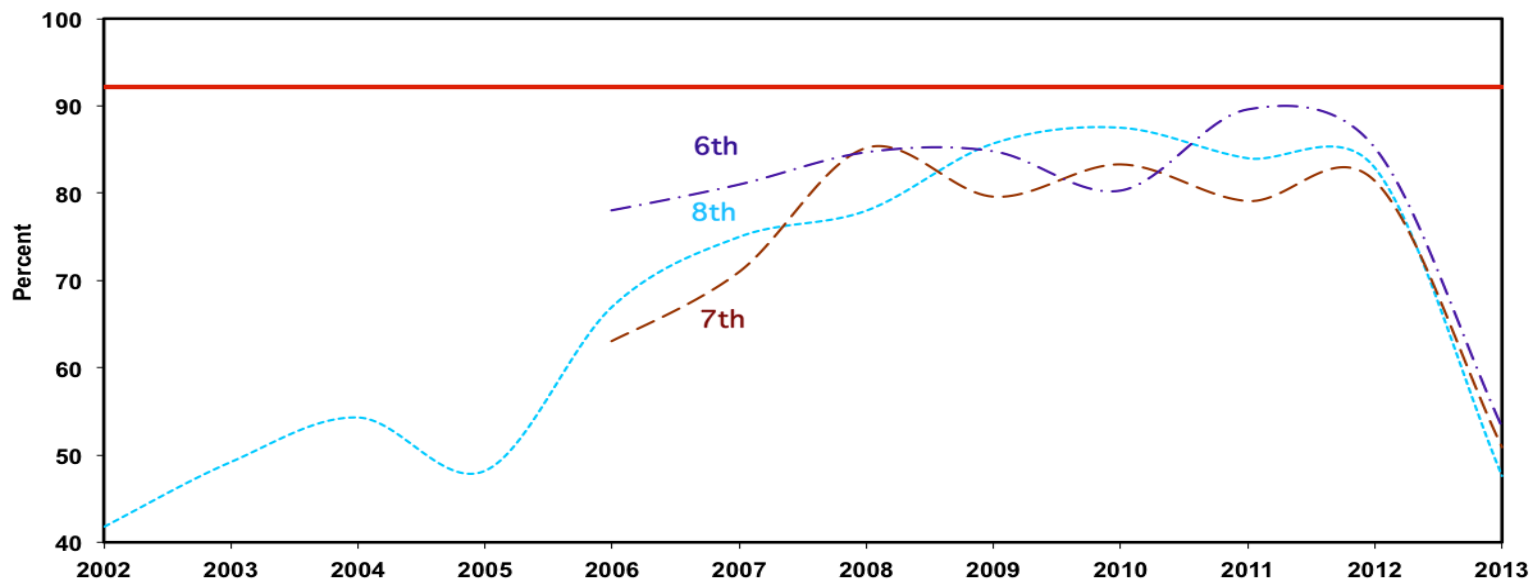
2002-05: 3rd, 5th, 8th Grades
2006 on: All Grades



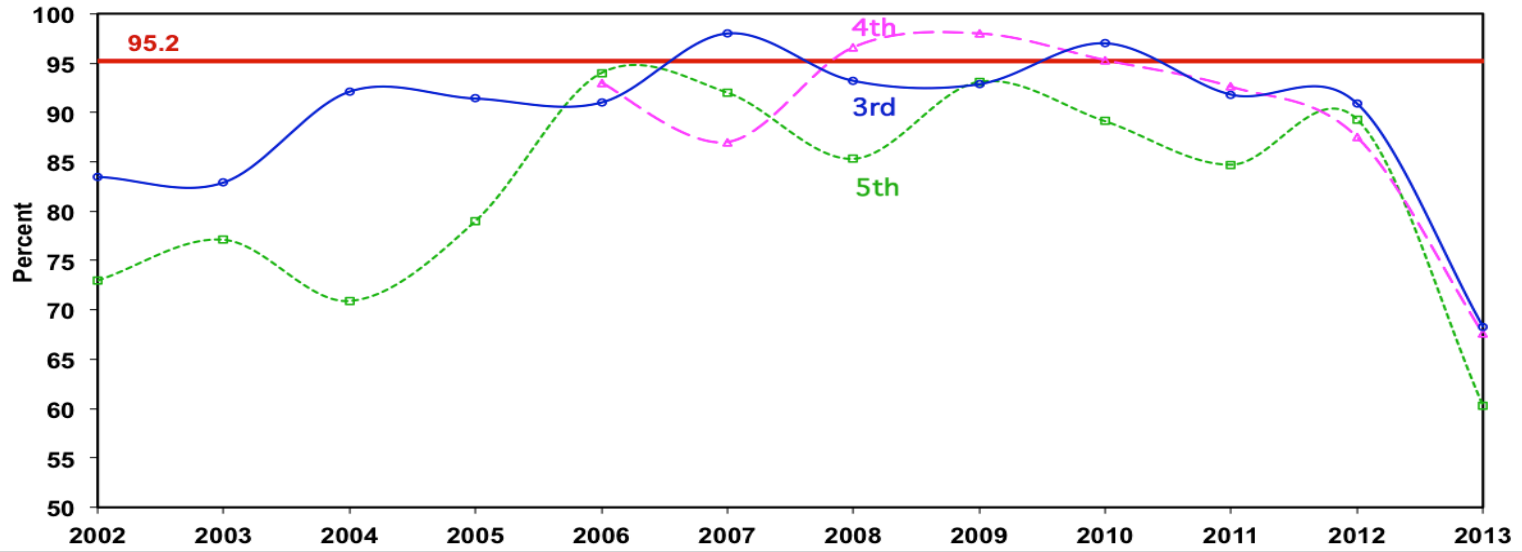
District **IEP READING** Scores 2002-2013
(Average through 2012)



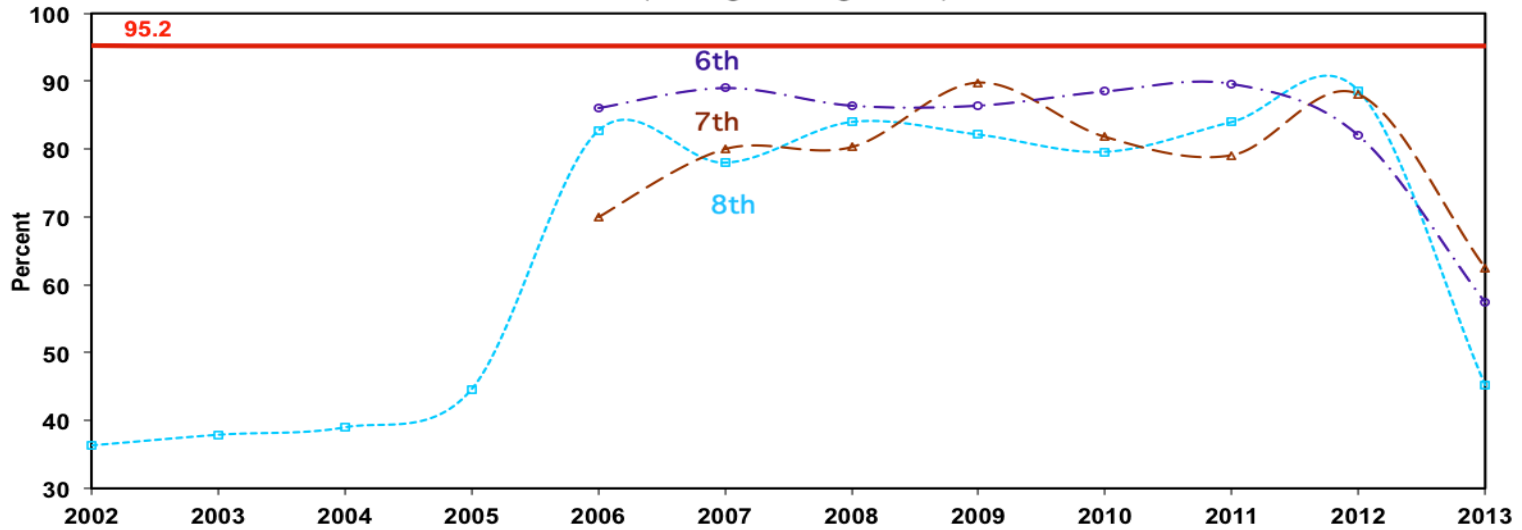
District **IEP READING** Scores 2002-2013
(Average through 2012)



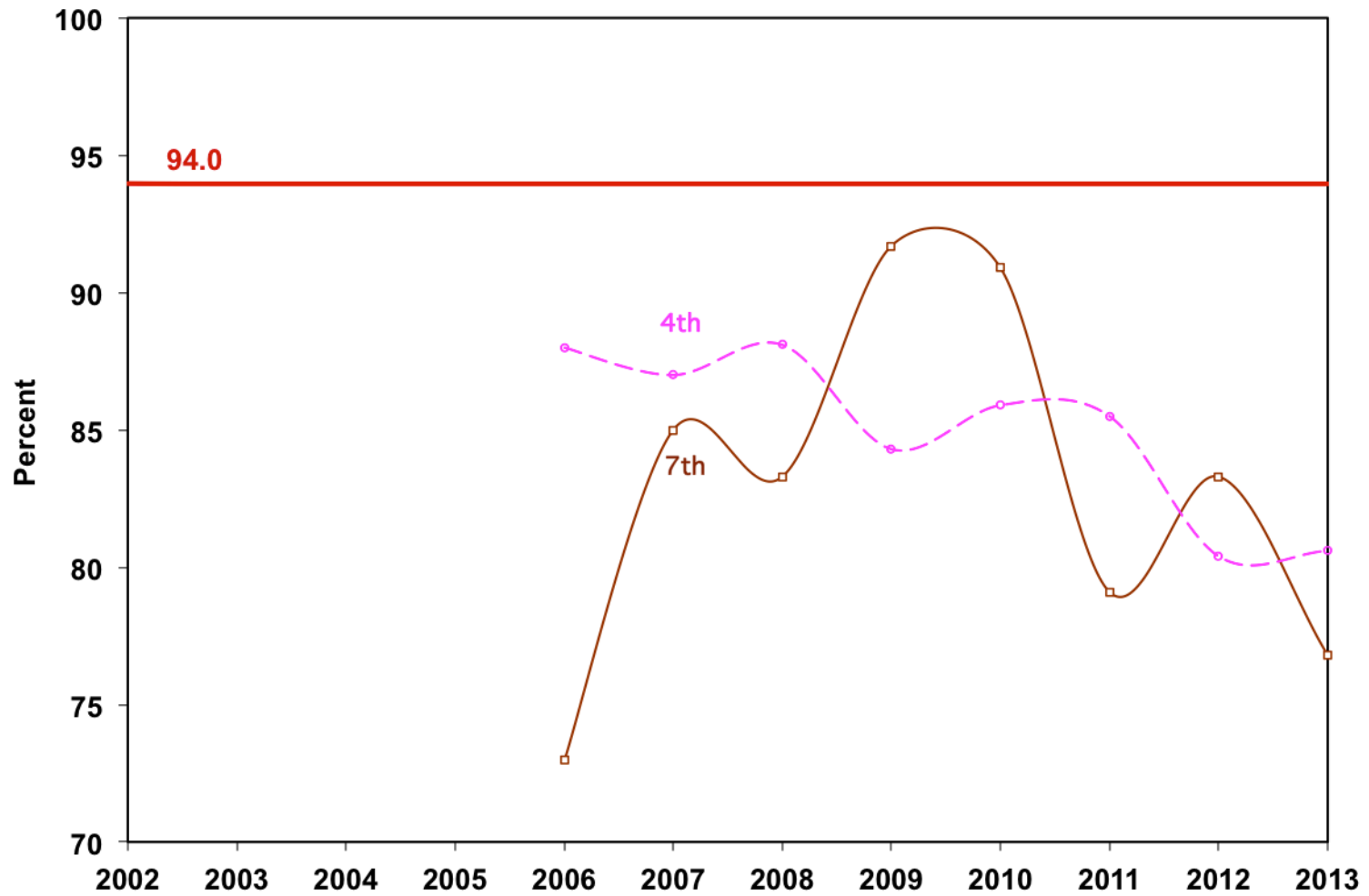
District IEP MATH Scores 2002-2013
(Average through 2012)



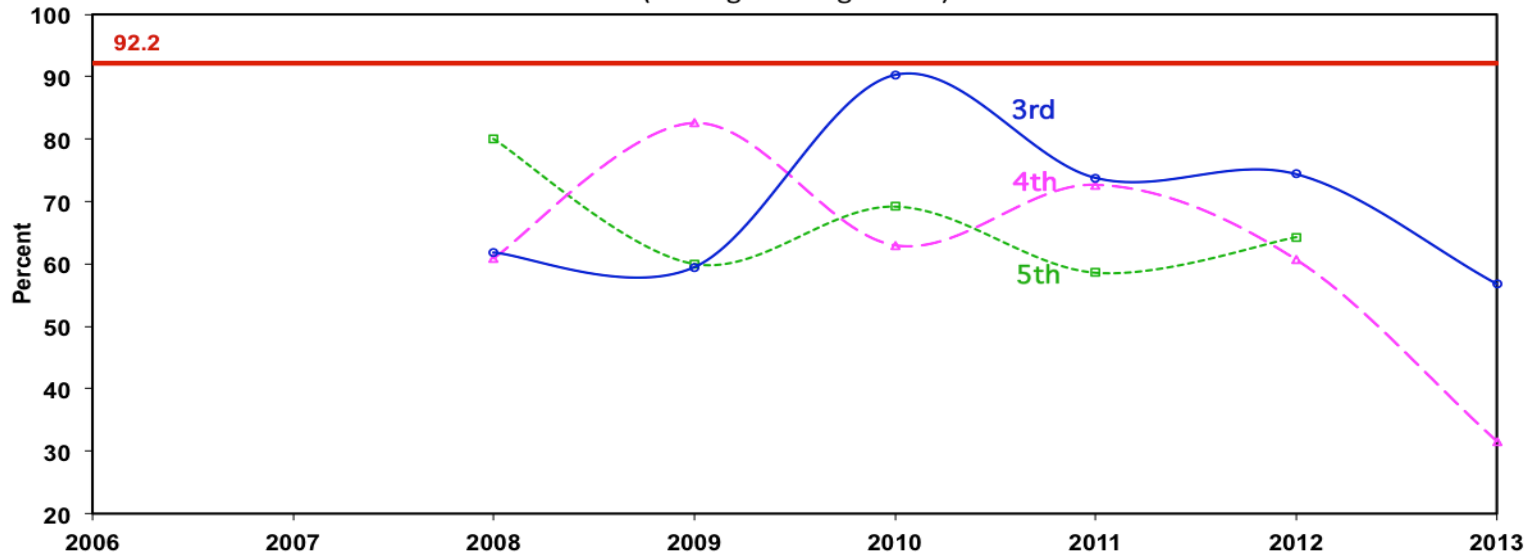
District IEP MATH Scores 2002-2013
(Average through 2012)



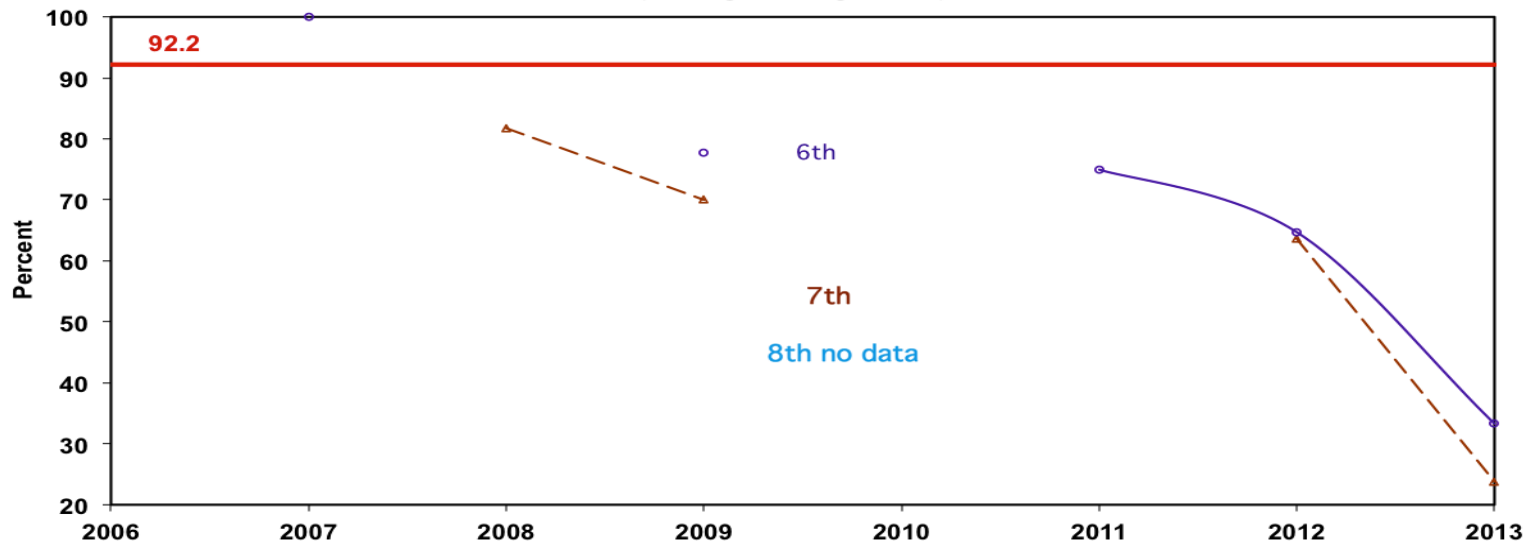
District IEP SCIENCE Scores 2002-2013
(Average through 2012)



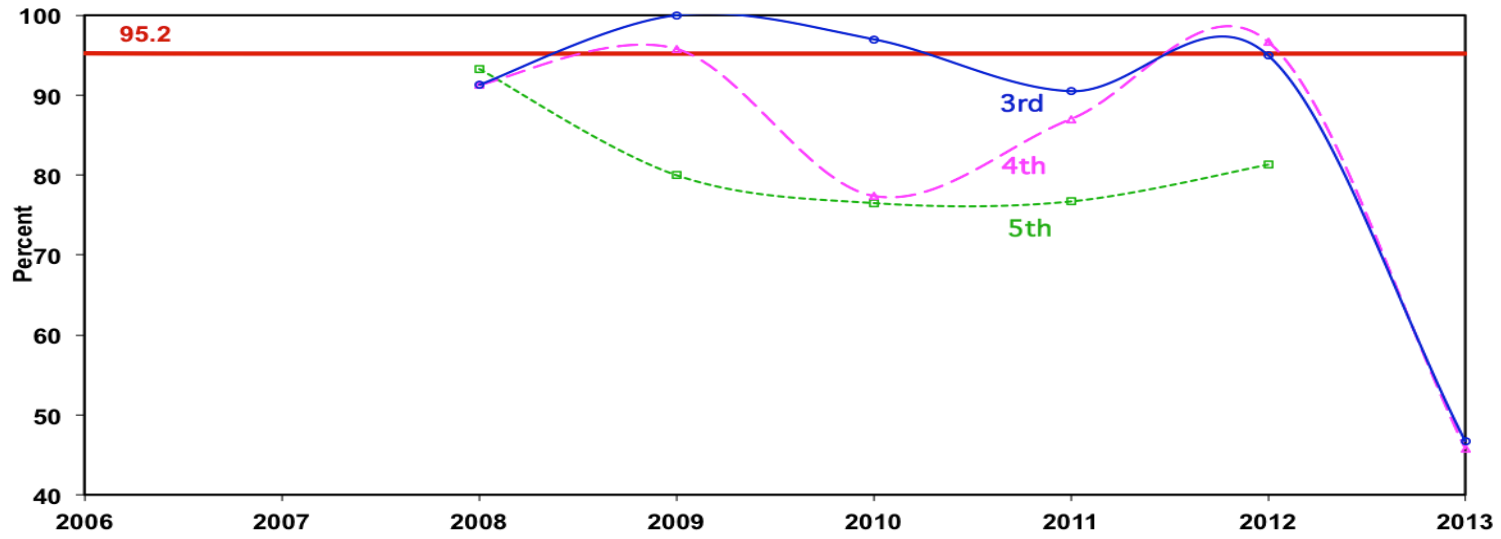
District LEP READING Scores 2006-2013
(Average through 2012)



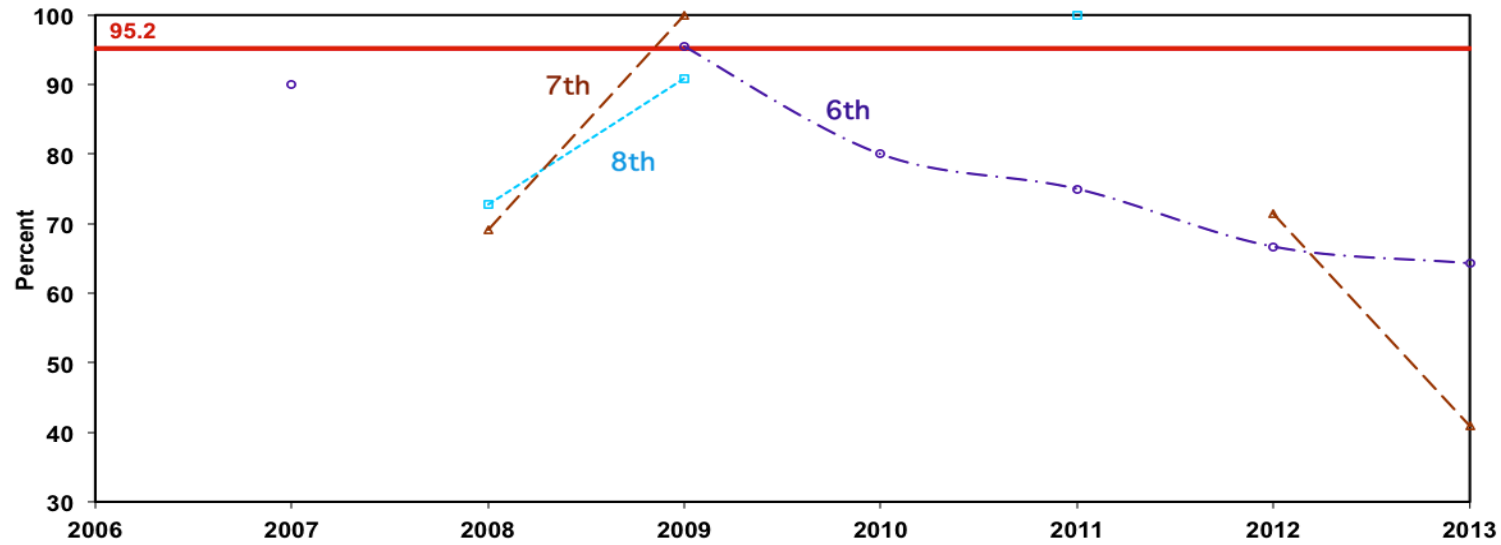
District LEP READING Scores 2006-2013
(Average through 2012)



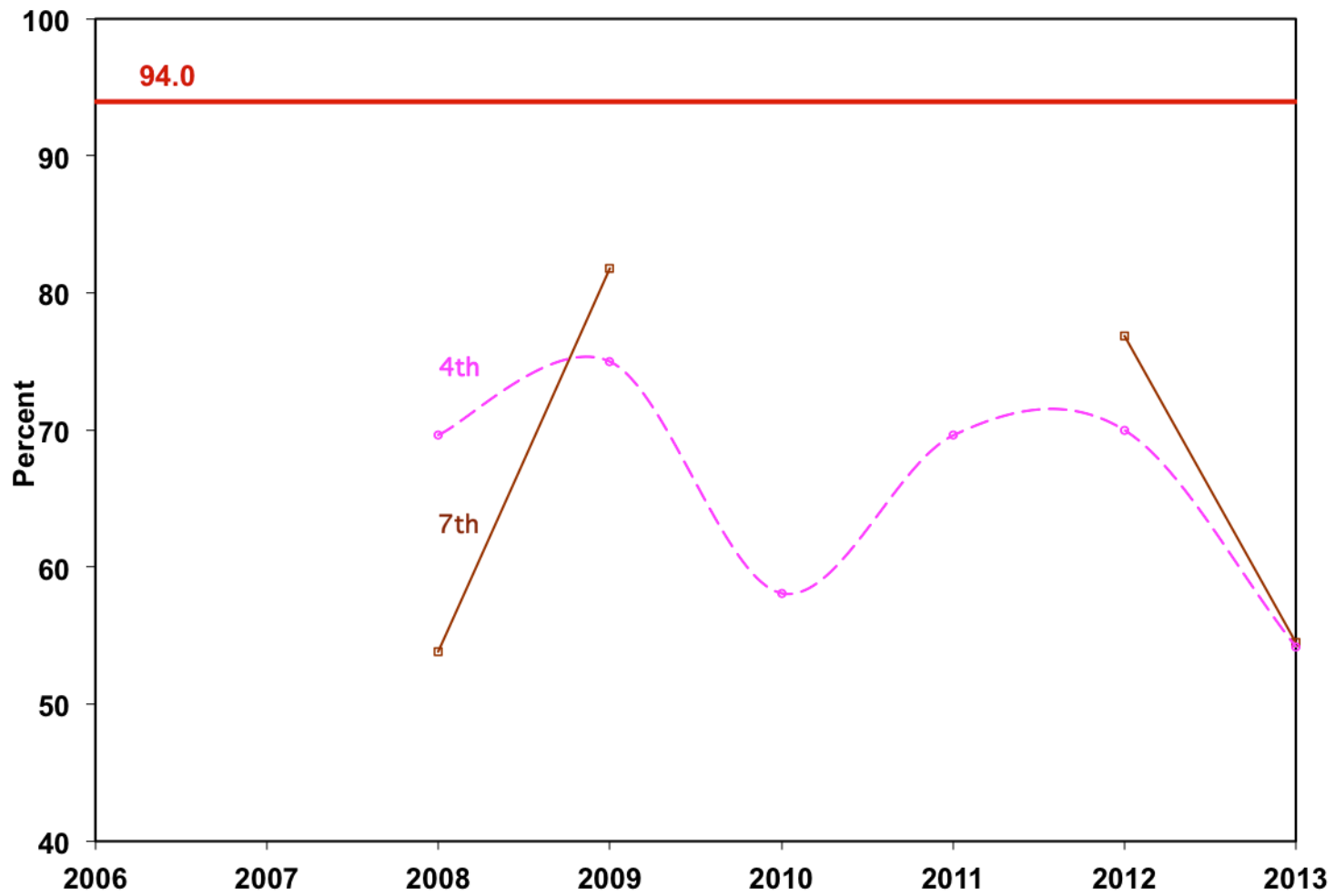
District LEP MATH Scores 2006-2013
(Average through 2012)



District LEP MATH Scores 2006-2013
(Average through 2012)

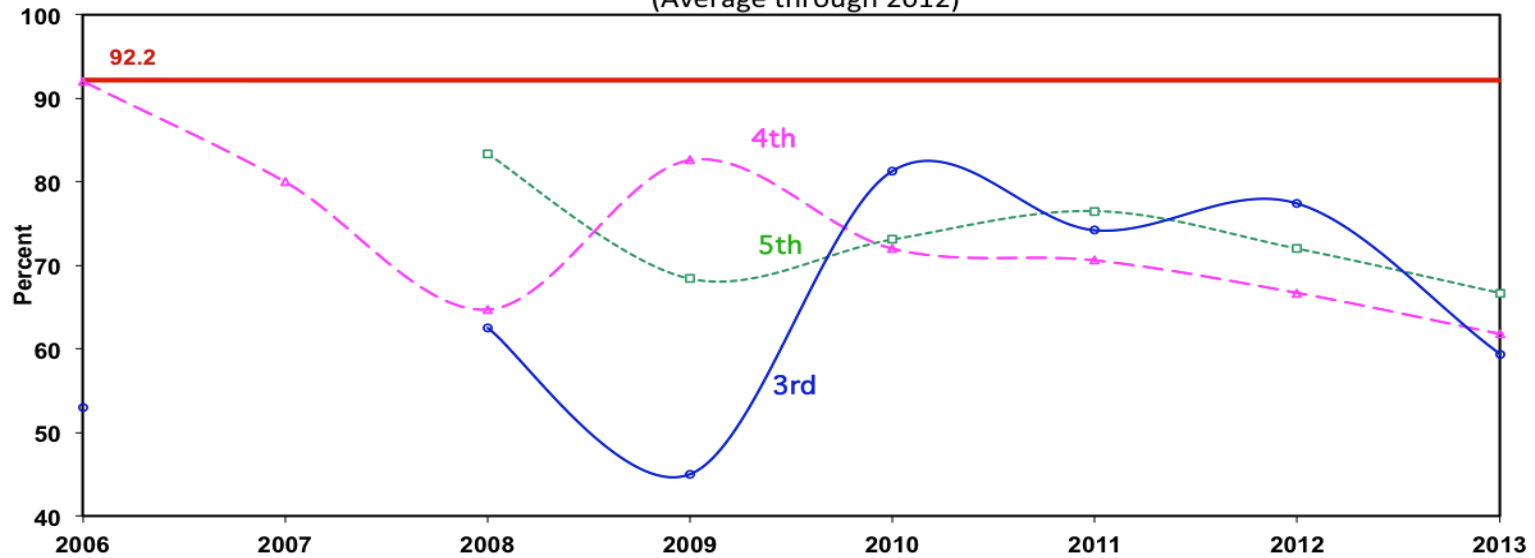


District **LEP SCIENCE** Scores 2006-2013
(Average through 2012)



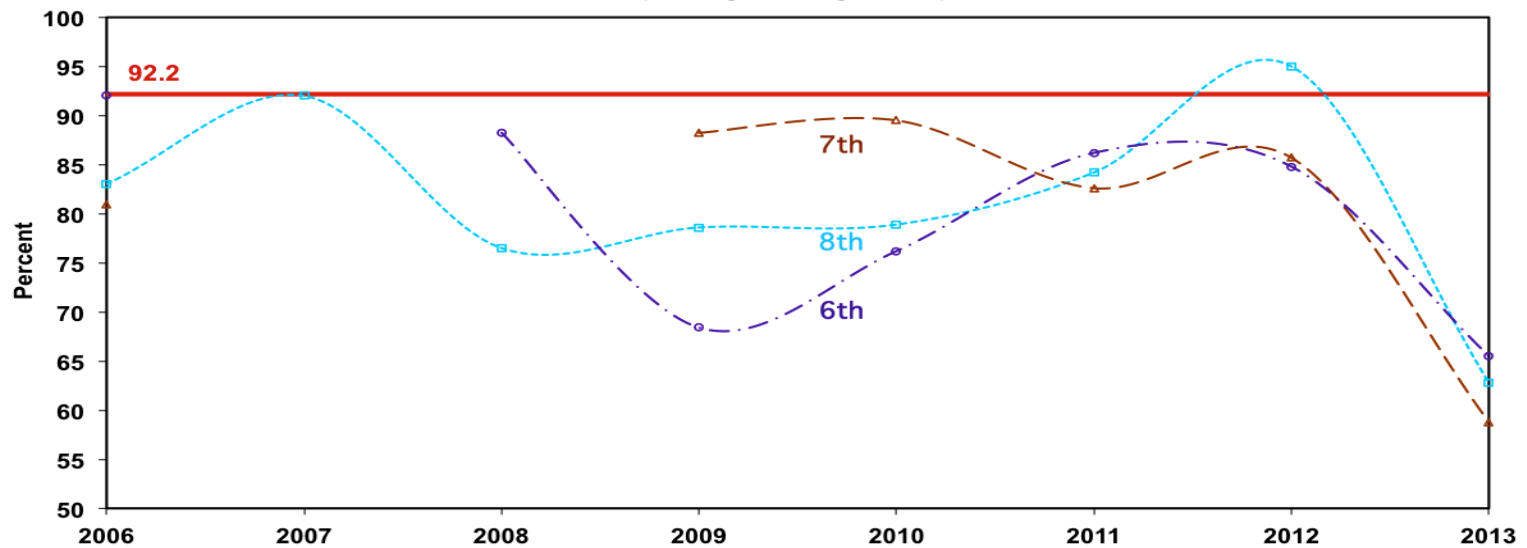
District **LOW INCOME READING** Scores 2006-2013

(Average through 2012)

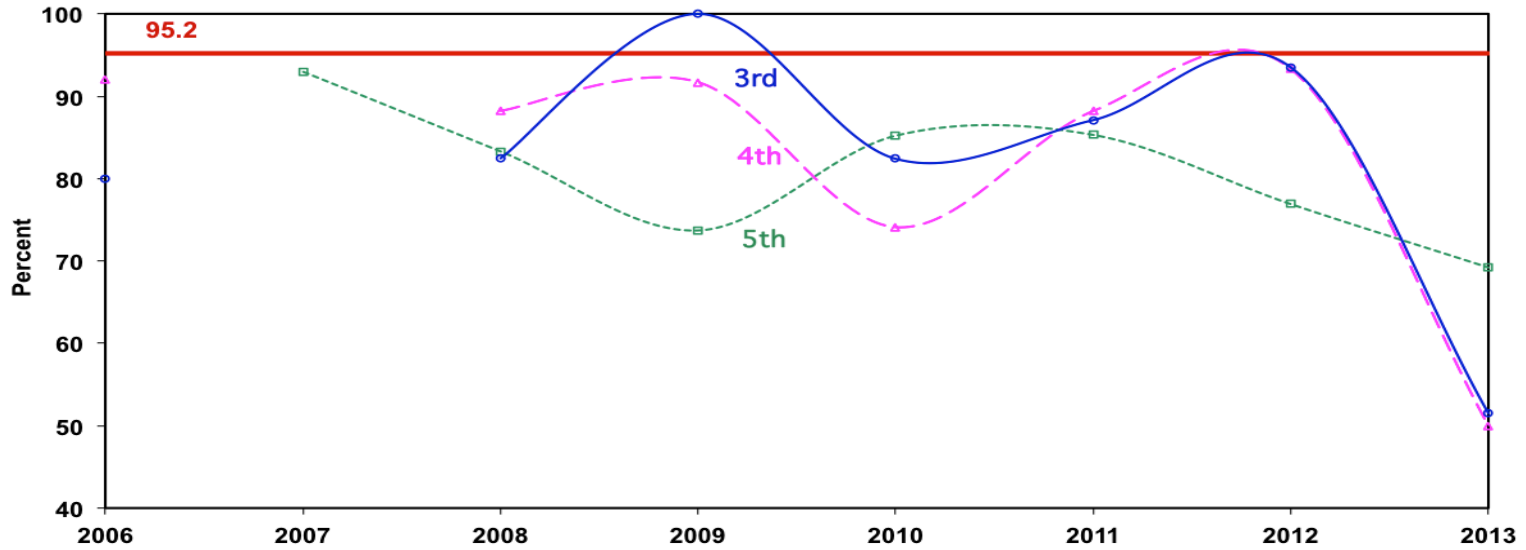


District **LOW INCOME READING** Scores 2006-2013

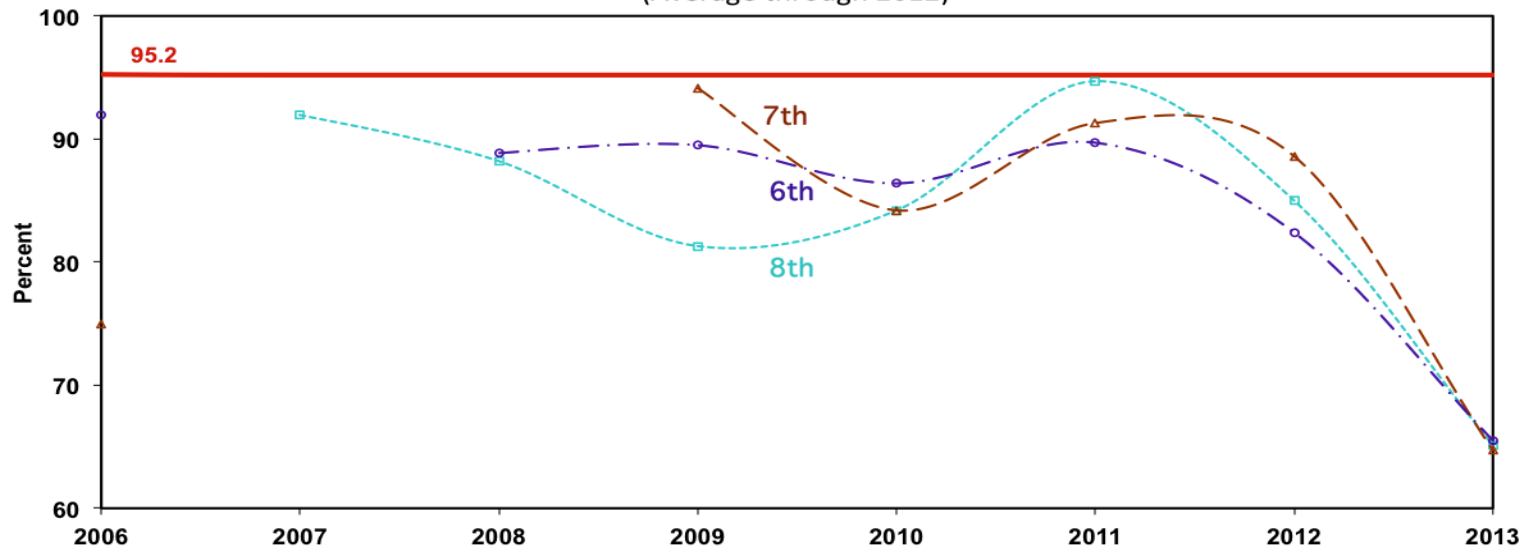
(Average through 2012)



District LOW INCOME MATH Scores 2006-2013
(Average through 2012)



District LOW INCOME MATH Scores 2006-2013
(Average through 2012)



District **LOW INCOME SCIENCE** Scores 2006-2013
(Average through 2012)

