

Lava Ridge Intermediate Interventions



Student

Skill

Will

Academic

Behavior

Universal Screeners

Tier 1

Tier 1

- Elementary Transition Meetings
- Sped/ELL placement
- Honors Placement Testing
- Benchmarks to catch extras
- Student Profiles
- Co-taught Core Classes
- Identifying Move-Ins quicker
- Data from Elementary
- Using data for placement
- Contact prior schools

Instruction
Mission Statement
Relationships
Mental Health

Instruction
CHAMPS
PBIS
Mental Health

GECKO Cards
Touch Gold
Beginning of Year Expectations

Tier 2

Tier 2

GVC Standards
Clear Expectations
Current Websites
Weekly Progress Reports

Advisory
(Re-teach)
Gecko Day

iTeams
3 Teams Per Grade
(Math, LA, Science)

3 two week interventions
(Total 6 weeks)
Tracking Sheet
Peer Mentoring
P/T Conference

Tier 3

Tier 3

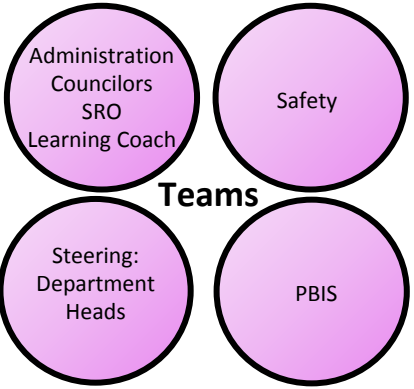
Priority Schedule:
Monday Fine Arts
Tuesday Science
Wednesday LA
Thursday Math

Leadership Intervention

Leadership Background Interventions

Southwest Behavior Intensive Counseling
Adjust Schedule
Attendance Tracking
Check In Check Out
Social Skills Group

Leadership Options:
CSIP
Study Skills
ELL Support
504 or Sped Referral



Universal Screeners



- Elementary Transition Meetings
- Sped/ELL placement
- Honors Placement Testing
- Benchmarks to catch extras
- Student Profiles
- Co-taught Core Classes
- Identifying Move-Ins quicker
- Data from Elementary
- Using data for placement
- Contact prior schools

Universal Screeners

- Elementary Transition Meetings
- Sped/ELL placement
- Honors Placement Testing
- Benchmarks to catch extras
- Student Profiles
- Co-taught Core Classes
- Identifying Move-Ins quicker
- Data from Elementary
- Using data for placement
- Contact prior schools

Academic Tier 1



- [SKILL](#)
 - Quality Instruction
 - [Mission/Vision/Purpose Statement](#)
 - Relationships
 - Mental Health
-
- GVC standards posted and referenced
 - All CORE classes meet and exceed grade level standards
 - Clear expectations
 - CFA given for essential standards
 - Identify students for Tier 2
 - Advisory homework/re-teaching
 - Weekly progress reports
 - Current teacher websites

Tier 1

GVC Standards
Clear Expectations
Current Websites
Weekly Progress Reports

Instruction
Mission Statement
Relationships
Mental Health

MISSION STATEMENT

We are dedicated to doing what is BEST for ALL students.



SCHOOL VISION

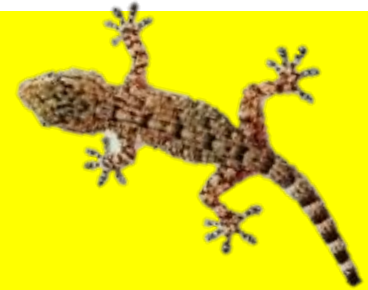
Every student TOUCHES GOLD... every day with every opportunity.

SCHOOL PURPOSE

We will ENSURE that ALL students will learn at high levels.



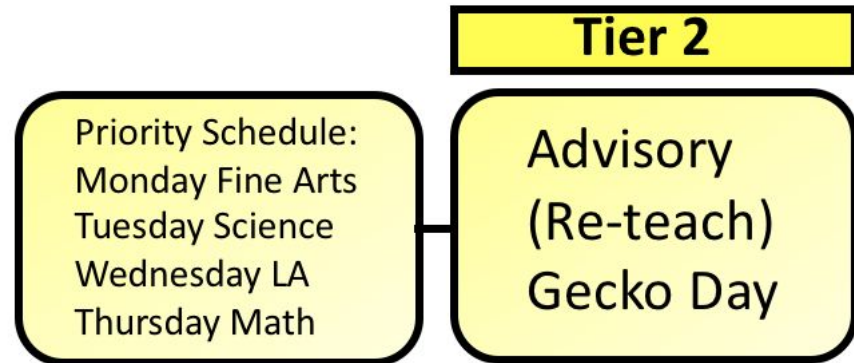
Academic Tier 2



- Gecko Day
- [Advisory \(Re-Teach\) Schedule](#)

Priority Schedule:
Monday Fine Arts
Tuesday Science
Wednesday LA
Thursday Math

- CFA Scores/Benchmarks
- Student/teacher/iTeam referrals
- Enriched classes/Co-taught classes
- Support classes (study skills)
- Department & Admin monthly collaboration



Monday	Fine Arts Priority Day after first 5 minutes of Advisory. Tasks for Advisory: <ul style="list-style-type: none"> • Check grades in ALL classes • Identify missing assignments and work on them • Clean and organize school binder • Make a plan for the week • SSR (Silent Sustained Reading) • No Channel One
Tuesday	Science Priority Day <ul style="list-style-type: none"> • Re-teaching Time/Test or Quiz make-up time • All Classes will focus on completion of missing assignments • All classes will do SSR Time/Channel One
Wednesday	LA Priority Day <ul style="list-style-type: none"> • Re-teaching Time/Test or Quiz make-up time • All Classes will focus on completion of missing assignments • All classes will do SSR Time/Channel One
Thursday	Math Priority Day <ul style="list-style-type: none"> • Re-teaching Time/Test or Quiz make-up time • All Classes will focus on completion of missing assignments • All classes will do SSR Time/Channel One
Friday	Singleton Priority Day (Soc. Studies, CTE, PE) <ul style="list-style-type: none"> • Re-teaching Time/Test or Quiz make-up time • All Classes will focus on completion of missing assignments • All classes will do SSR Time/Channel One

Academic Tier 3



- Leadership Intervention
- CSIP
- Study skills support classes
- ELL support
- 504 or Sped referral
- Check In - Check Out
- Attendance Success Plan

Tier 3

Leadership Options:
 CSIP
 Study Skills
 ELL Support
 504 or Sped Referral

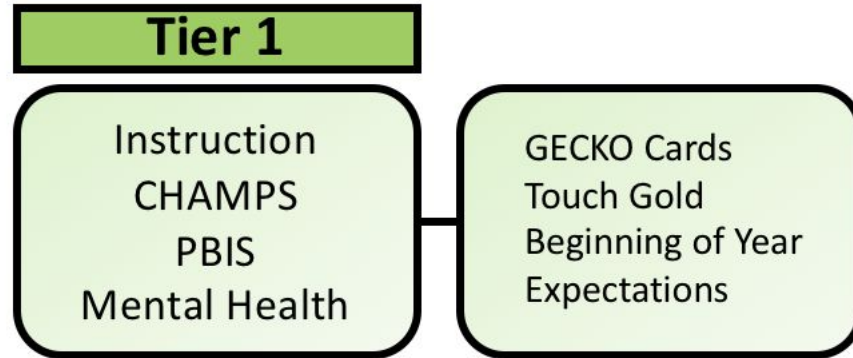
Leadership
 Intervention

Student Name	Dates	Intervention #1	Intervention #2	Intervention #3	Tier 3 Team Interventions	Concern
Jon Doe	8/1/2017	Audible cue used by all teachers to help return to task.	Contacted parents about behavior. Parents will use the audible cue at home as well. In class we will assign a peer mentor in each class to prompt the student.	We will use a behavior tracker. Jon will collect from his first period teacher and set a goal for the day. At the end of school, he will review his performance with his sixth period teacher.		Jon frequently gets off task and distracts others in class.
	8/15/2017	Results #1	Results #2	Results #3	Results #4	
	8/30/2017	Slight improvement, but the student continues to distract others.	Student views the mentor as a babysitter and has regressed due to others being aware of the situation.	Jon frequently loses his tracker and shows up to first period late to avoid starting his tracker.		

Behavior Tier 1



- [WILL](#)
- [GECKO Cards](#)
- Touch Gold
- Beginning of year expectations
- Instruction
- CHAMPS
- PBIS
- Mental health
- Counselling (Individual and Group)
- Resilience counselling lessons
- Effort celebrations
- Wonder notes
- Growth Mindset lessons
- Organization lessons
- Bullying hotline (24/7)
- Supervision



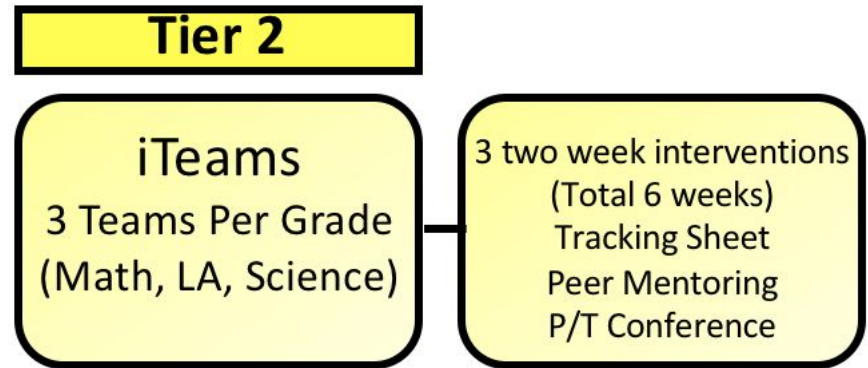
- Weekly messages home
- Positive culture-build relationships
- Hope Squad
- Peer mentoring
- iTeams
- Advisory

		All Settings	Classrooms and Labs	Hallways	Bathrooms and Locker Rooms	Bus	Cafeteria and Lunch Areas
G	Good Learners	<ul style="list-style-type: none"> ➢ Organized ➢ Prepared ➢ On Task ➢ On Time 	<ul style="list-style-type: none"> ➢ Binders & Backpacks are Organized ➢ Use Class and Flex Time Wisely 	<ul style="list-style-type: none"> ➢ Get Drinks Between Classes ➢ Take Direct Routes ➢ Respect Displays ➢ Respect Students 	<ul style="list-style-type: none"> ➢ Plan to Use Restrooms During Breaks 	<ul style="list-style-type: none"> ➢ Double-Check Materials for the Day ➢ Follow Bus Procedures ➢ Sit in Assigned Seats 	<ul style="list-style-type: none"> ➢ Eat Quickly ➢ Form Lines ➢ Clean Area
E	Expect Success	<ul style="list-style-type: none"> ➢ Try Your Best ➢ Be Prepared ➢ Positive Expectations 	<ul style="list-style-type: none"> ➢ Know You Are Good Enough! ➢ Complete Assignments ➢ Do Your Best ➢ Be Confident 	<ul style="list-style-type: none"> ➢ Use Appropriate Language ➢ Learn Schedule ➢ Avoid Drama ➢ Be Punctual ➢ Walk! 	<ul style="list-style-type: none"> ➢ Keep the Restroom and Locker Room Clean 	<ul style="list-style-type: none"> ➢ Quickly Board and Depart the Bus ➢ Avoid Drama ➢ Be on Time 	<ul style="list-style-type: none"> ➢ Pay Lunch Money Before School ➢ Eat Your Food
C	Care for Others	<ul style="list-style-type: none"> ➢ Respect People and Property ➢ Stand Up for Others ➢ Be Supportive 	<ul style="list-style-type: none"> ➢ Look for Those in Need ➢ Be an Example ➢ Respect Space ➢ Be Aware 	<ul style="list-style-type: none"> ➢ Watch Where You Walk ➢ Follow Direction and Stairway Signs ➢ Walk! 	<ul style="list-style-type: none"> ➢ Maintain Cleanliness ➢ Think of Others ➢ Wash Hands ➢ Show Respect 	<ul style="list-style-type: none"> ➢ Maintain Cleanliness ➢ Stand-Up for Others ➢ End Bullying ➢ Show Respect 	<ul style="list-style-type: none"> ➢ Throw Left-Overs Away ➢ Show Gratitude ➢ Stay in Line
K	Appreciate Key People	<ul style="list-style-type: none"> ➢ Be Respectful ➢ Meet Expectations ➢ Touch Gold 	<ul style="list-style-type: none"> ➢ Respect Teachers and Other Staff ➢ Work Together ➢ Ask for Help 	<ul style="list-style-type: none"> ➢ Keep Voices Quiet ➢ Be On Time ➢ Smile -- Be Happy! 	<ul style="list-style-type: none"> ➢ Take Responsibility for Yourself and Your Actions 	<ul style="list-style-type: none"> ➢ Respect the Driver ➢ Be a Leader 	<ul style="list-style-type: none"> ➢ Respect Lunch Staff ➢ Clean Up After Yourself
O	Create Opportunities for All	<ul style="list-style-type: none"> ➢ Responsible for Actions ➢ Be Proactive ➢ Integrity ➢ Honesty 	<ul style="list-style-type: none"> ➢ Be Willing to Work With Anyone ➢ Positive Attitude and Comments 	<ul style="list-style-type: none"> ➢ Be Aware of Others ➢ Take Direct Routes ➢ Be Courteous 	<ul style="list-style-type: none"> ➢ Report any Necessary Information to the Office. ➢ Wait Your Turn 	<ul style="list-style-type: none"> ➢ Be Kind ➢ Be a Part of the Solution ➢ Be Aware of Others 	<ul style="list-style-type: none"> ➢ Identify Problems and Help Create Solutions ➢ Do What Needs to be Done

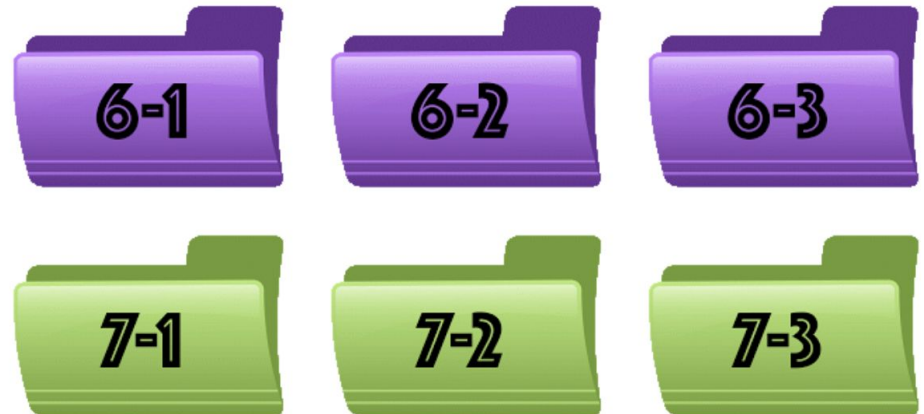
Behavior Tier 2



- iTeams
- 3 Teams per grade (Math, LA, Science)
- 3 two week interventions
- (Total 6 weeks)
- [iTeam Tracking Sheet](#)
- [Discipline Matrix](#)
- [LRIS Data Mapper](#)
- [Office Referral](#)
- Conference
- Schedule change
- Tracking attendance/contact
- [Attendance Success Plan Form](#)
- PowerSchool doc
- Parent conference
- After school invite
- Emails home
- Home visits
- Lunch detention



Team Tracking Folders

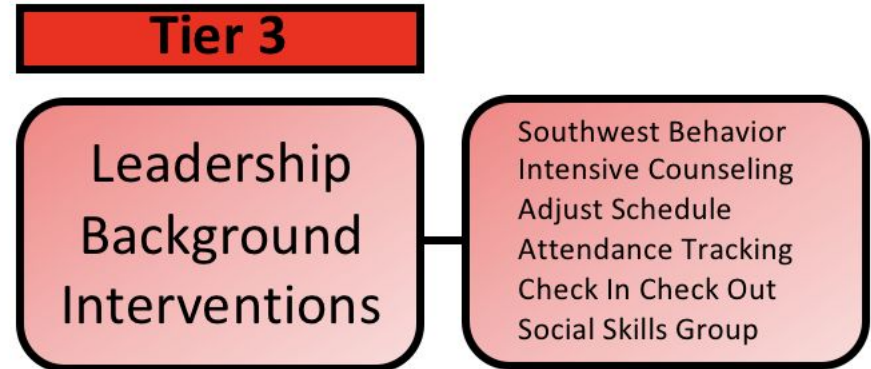


Behavior Tier 3



- Leadership
- Student Background
- Interventions

- Southwest Behavior
- Intensive counseling
- Adjust schedule
- Attendance tracking
- Check In Check Out incentives
- Social skills group
- Transition meeting from Tier 2 to 3 with intervention team
- Monthly PBIS meetings
- Monthly training/orientation for all new students that month



Behavior Rubric



Discipline Matrix

This Discipline Matrix is intended to help guide teachers and administrators as they work with students struggling with behavior. All Safe School infractions come to the Assistant Principal immediately. All minor offenses are handled by Classroom teachers and I-Teams unless a student is referred to the Tier 3 team after 3 failed interventions.

Minor Offenses 1st - Handled by classroom Teachers 2nd - I-Team - RTI process (will/skill) (Tier 1 & 2)	Major - level 1 Offenses (Tier 3)	Major - level 2 offenses (Tier 3)
<ul style="list-style-type: none"> ● Procedural violations ● Non-physical horseplay ● Lack of preparedness ● Out of assigned area ● Class disruptions - verbal ● Moving out of seat ● Throwing objects ● Passing Notes/texting ● Off Task Behavior 	<ul style="list-style-type: none"> ● Repeat Minor offenses (previously taken to I-team for RTI Interventions and now referred to Tier 3 team.) ● Physical horseplay Parent contact, LD ● PDA (kissing, holding hands etc.) - parent contact/LD if not corrected ● Use of Electronic device <u>3rd</u> - Confiscate and turn to office - student pick-up at end of day. <u>4th</u> - Admin conference - Turn it into office - Parent must pick up. 	<ul style="list-style-type: none"> ● Repeated level 2 offenses. ● Fighting - 1-10 days of ISS/OSS ● Drugs, Alcohol, Tobacco - 1-10 days of ISS/OS ● Weapons and/or Dangerous Objects - 5-10 days of ISS/OSS ● Insubordination - Parent/ISS ● Refusing a

Academic Definitions



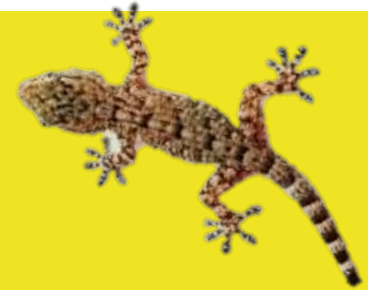
- **GECKO DAYS:** Depends on departments. On that day first period, all students take a CFA. Students that don't pass go into re-teach. Those that pass but don't have homework done go to homework hall, those who passed go to extension activity.
- **PRIORITY DAYS FOR RE-TEACHING:** Teachers fill out an advisory request form if they want a particular student during advisory. Each department has a different day. An email is sent out everyday to teachers letting them know which students need to go where. Third period teachers let students know where to go for advisory.
- **CHECK IN – CHECK OUT:**
- **ATTENDANCE SUCCESS PLAN:**
- **ADVISORY:**
- **WEEKLY PROGRESS REPORTS:**
- **STUDENT ACADEMIC REFERRALS:**

Behavior Definitions



- STUDENT SAFETY PATROLS:
- Bus kids monitor events on bus and report when their bus number is posted. Fill out a form indicating behavior, swearing, and bullying on the bus. Mr. Bozarth follows up students who misbehaved.
- Lunch monitors are given red tickets at lunch that day as they sit down to eat. They report on that section and make sure students act accordingly and things are picked up.
- EFFORT CELEBRATIONS:
- WONDER NOTES:
- HOPE SQUAD:
- PEER MENTORING:
- TOUCH GOLD: school vision. Every student touches gold every day with every opportunity.
- GECKO CARDS: Teachers/staff hand out cards based on Gecko expectations. Office scans the card to see if it is a bronze, silver, or gold prize.

TEAM Meetings



- **iTEAMS:** Meet every other Monday after school. Behavior and academics are discussed. Teachers decide what intervention is needed. They can use the Will/Skill webpage for ideas. Students are put on tracking sheet for two week intervention.
- **LEADERSHIP:** Meets weekly. Leadership team member assigned to every iTeam. Leader goes to each iTeam meeting. Research before meeting what is happening and comes with suggestions.
- **STEERING:** Made of department chairs. This meeting occurs monthly. School wide issues are discussed and new ideas are suggested to gage how something might go over before presenting it in faculty meeting.
- **PBIS:** People who have helped put together the PBIS program. What's happening to support behavior through a lens of variety of kids. Tick list yearly to measure what is working and what is not working.
- **SAFETY:**

