

What is an IB Education?

The IB aspires to help schools develop well-rounded students with character who respond to challenges with optimism and an open mind, are confident in their own identities, make ethical decisions, join with others in celebrating our common humanity and are prepared to apply what they learn in real-world, complex and unpredictable situations. The IB offers high-quality programmes of international education that share a powerful vision. Informed by the values described in the Learner Profile, an IB education:

- focuses on learners—the IB’s student-centred programmes promote healthy relationships, ethical responsibility and personal challenge
- develops effective approaches to teaching and learning—IB programmes help students to develop the attitudes and skills they need for both academic and personal success
- works within global contexts—IB programmes increase understanding of languages and cultures, and explore globally significant ideas and issues
- explores significant content—IB programmes offer a curriculum that is broad and balanced, conceptual and connected.

Laguna Creek Region MYP Partnership

The Laguna Creek Region MYP is a partnership program with Harriet Eddy M.S. and Laguna Creek H.S. The programme is in its candidacy phase. Students participate at Harriet Eddy in grades 7-8 and grades 9-10 at Laguna Creek H.S.

Laguna Creek H.S. is an authorized IB Diploma Program school for students in the 11th and 12th grades. The MYP partnership prepares our students for Laguna Creek’s Diploma Program.

Contact Information:

Mark Benson-Principal, HEMS
mabenson@egusd.net

Carolynn Puccioni-MYP Coordinator, HEMS
cpuccion@egusd.net

Harriet Eddy M.S. 916-683-1302

Doug Craig-Principal, LCHS
dcraig@egusd.net

Jose Oseguera-MYP Coordinator, LCHS
joseguer@egusd.net

Laguna Creek H.S. 916-683-1339

Scan the QR codes to visit the school sites for more information.

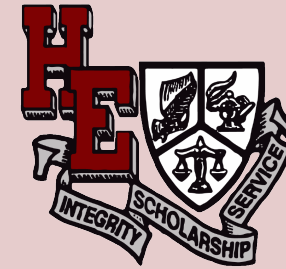
HEMS Website



LCHS Website



Laguna Creek Region Middle Years Programme



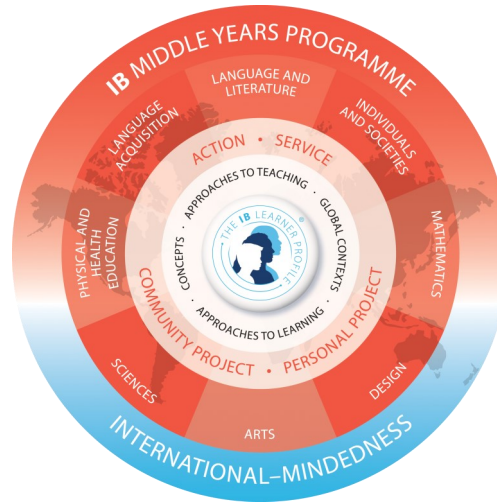


IB Mission Statement

The International Baccalaureate® aims to develop inquiring, knowledgeable and caring young people who help to create a better and more peaceful world through intercultural understanding and respect.

To this end the organization works with schools, governments and international organizations to develop challenging programmes of international education and rigorous assessment.

These programmes encourage students across the world to become active, compassionate and lifelong learners who understand that other people, with their differences, can also be right.



The MYP curriculum consists of eight subject groups:

1. Language and Literature
2. Language Acquisition
3. Individuals and Societies
4. Sciences
5. Mathematics
6. Arts
7. Physical and Health Education
8. Design

Student study is supported by a minimum of 50 hours of instruction per subject group in each academic year. In years 4 and 5, students have the option to take courses from six of the eight subject groups, which provides greater flexibility. The MYP is a unique approach, relevant for a global society. The MYP aims to help students develop their personal understanding, their emerging sense of self and responsibility in their community.

The IB Learner Profile attributes describe a broad range of human capacities and responsibilities that go beyond academic success.

Learners strive to be:

- Inquirers
- Knowledgeable
- Thinkers
- Communicators
- Principled
- Open-minded
- Caring
- Risk-takers
- Balanced
- Reflective

These characteristics are infused in the daily educational experience in the Middle Years Programme.

