

**Welcome**  
**Willowbrook Elementary**  
**Open House & Parent Orientation**

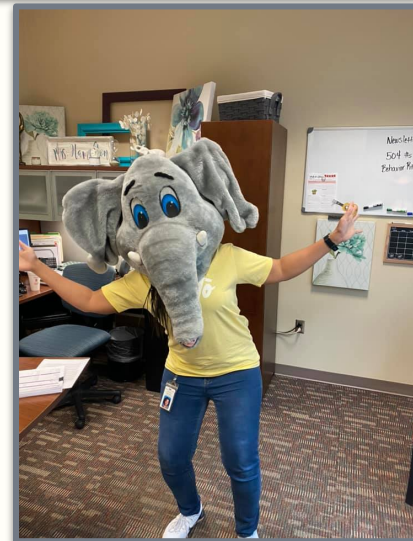
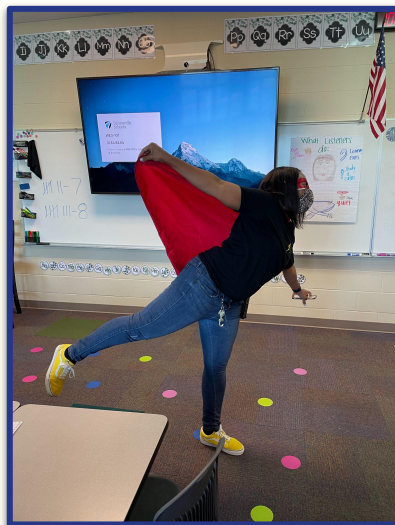
**2022 - 2023**



# Principal

## Christina Hamilton

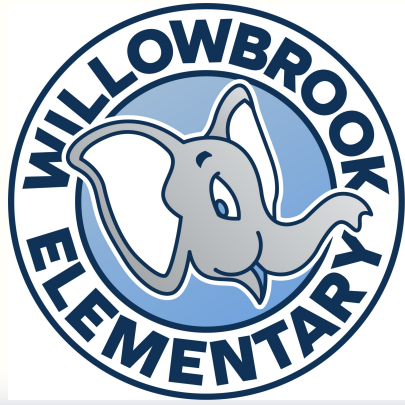
chamilton@bentonvillek12.org



Assistant  
Principal  
**Matt Allen**

[mallen@bentonvillek12.org](mailto:mallen@bentonvillek12.org)





# Our Story

- Opened in 2012
- Celebrating 10 Years
- Fun, Loving School with High Energy, Community based
- Enrollment at 700 students
- 60+ Staff Members
- Kids come first!



# *Our Collective High Expectations are Non-Negotiable.*

Students

Willowbrook Staff

Parents

We all have the same goal.

We are dependent on one another.

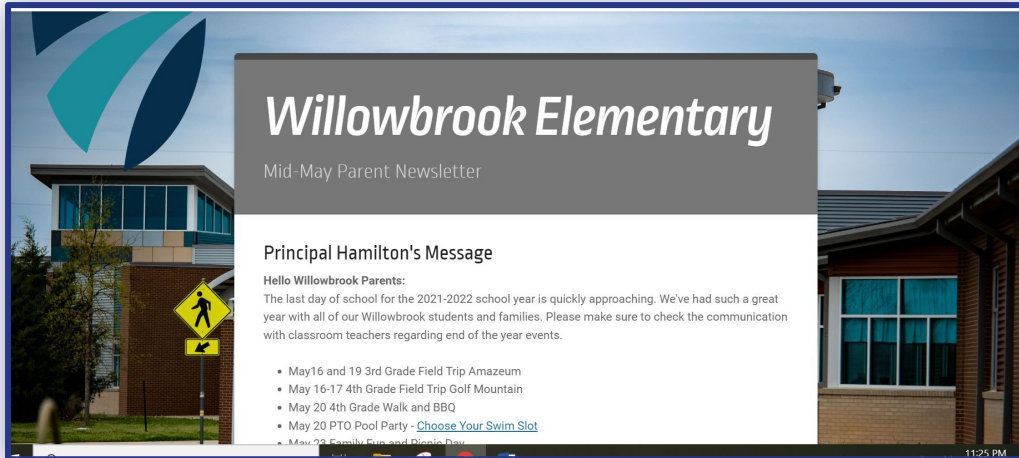
We are all required to try our very best.

It is our responsibility to ask for help when we need it.



# School Communication

- Monthly Smore Newsletter sent through email
- Social Media Post – FB, Instagram, Twitter
- Bentonville Schools District Website and App
- PTO and Teacher Communication through email
- Telephone Conferences
- Face-to-Face Conferences or Meetings scheduled in Advance



## Who do I contact if I need help as a parent?

🐘 Classroom Teacher, Activity Teacher, and/or Other Staff Member if Needed

🐘 Department Staff: ESL, SPED, Food Service, etc.

🐘 Front Office Staff

🐘 Administrator

## WILLOWBROOK

### Official Social Media Pages

Facebook: @WillowbrookBPS

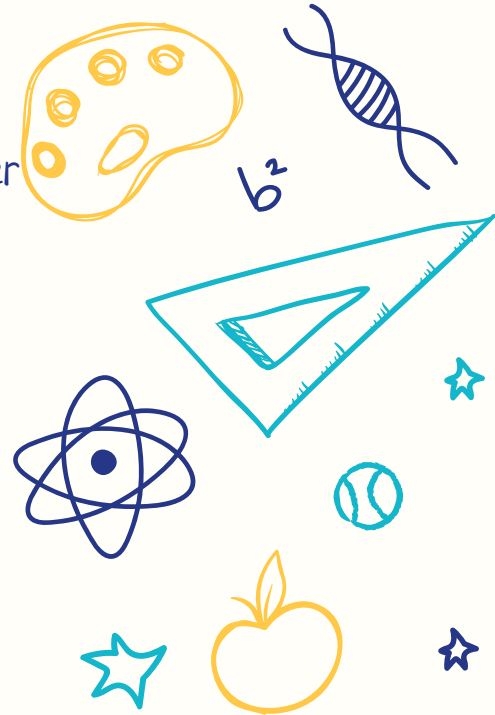
Twitter: @WESElephants

Instagram: @WESElephants



# Morning Arrival

- Doors open at **7:25 am and school begins at 7:50 am**
- Breakfast is served until 7:50
- Bus Riders enter through the back; Car Riders & Walkers enter through the front entrance
- Car drop off and pick up is a no cell phone zone
- Important to fill in the gaps and put your car in park
- There are no student drop offs from the parking lot; you may park in a designated slot and walk your student to the crosswalks
- Plan for Traffic and inclement weather
- Students who are not in their classrooms by 7:50am are tardy. Students arriving after the tardy bell must be signed in by an adult using the QR code at the front entrance



# Specials Classes & Schedules

**P.E.** - Heart Challenge, Field Day, etc.

**Music** - Grade Level Music Programs, Culture Fair, etc.

**Art** - Art Show, Culture Fair, etc.

**Digital Literacy** - Digital Citizenship, Safety

**Global Connections/STEM** - Global and Cultural Awareness, STEM, etc.

**Library** - Book Fair, All Bentonville Reads, etc






# School Wide Behavior Expectations

- Positive Behavior Intervention Supports (PBIS)
- Classroom Management Strategies
- Progressive Discipline Code
- SEL Required Components: Connections & Morning Meetings

Willowbrook Elementary Behavior Expectations								
	All Settings	Arrival	Dismissal	Cafeteria	Playground	Hallways	Pep Rally	Bathrooms
<b>Be Safe</b>	*Hands and feet to self *Walk *Check with a teacher before leaving assigned area	*Stay in supervised areas *Walk	*Walk *Stay with a teacher until you get to your spot	*Stand in the cafeteria line with volume 0/1 *Remain seated at tables *Walk	*Walk to and from the playground *Use equipment properly	*Walk on right side *Hands to yourself	*Keep hands and feet to yourself	*Respect the privacy of others
<b>Be Respectful</b>	*Use kind words and actions *Keep our school clean *Respond to greetings	*Listen to and follow directions of adults	*Listen to and follow directions of adults	*Practice good table manners *Eat your own food *Volume 2	*Play by agreed upon rules *Leave nature on the ground	*Volume 0	*Sit quietly on the floor with your classroom *Participate appropriately *Eyes on speaker with volume 0	*Volume 0 *Take care of the bathroom
<b>Be Responsible</b>	*Be on task *Do your best, even when it's hard	*Sit outside of your classroom	*Go to your designated spot	*Put trash in trashcans *Get what you need before sitting	*Pick up all personal items *Line up immediately when the whistle blows	*Pick up dropped items	*Follow directions	*Flush the toilet when you're done *Wash your hands before you leave *Put your paper towels in the trash

Willowbrook



## VOICE LEVELS

**Level 0:** No one can hear you. Your voice is off. No talking


**Level 1:** Only the person beside you can hear your voice. This is your whisper voice.

**Level 2:** Only the people in your small group

**Level 3:** Be as loud as your outside voice

Excellent Elephants do these 5 things to show they are active listeners at Willowbrook.

Willowbrook



## GIVE ME FIVE

- Eyes on the Speaker**
- Voice Level is 0**
- Still**
- Listening Ears**
- Thinking**

Excellent Elephants do these 5 things to show they are active listeners at Willowbrook.

Contact teacher and/or administrator regarding behavior or discipline.

# Volunteer Opportunities

- Variety of schoolwide volunteer opportunities
- All volunteers must complete the mandatory volunteer training with signed confidentiality agreement
- PTO also has volunteer opportunities
- Contact Mrs. Armstrong or Mrs. Hamilton if interested
- First Volunteer Training: PTO Meeting, Thursday, August 18th at 6pm



# Attendance

Please be mindful of scheduling appointments during school hours.

Students must be present for at least 3 hours to receive half day credit.

Student health is very important. If your child is sick please keep them home and notify the front office.

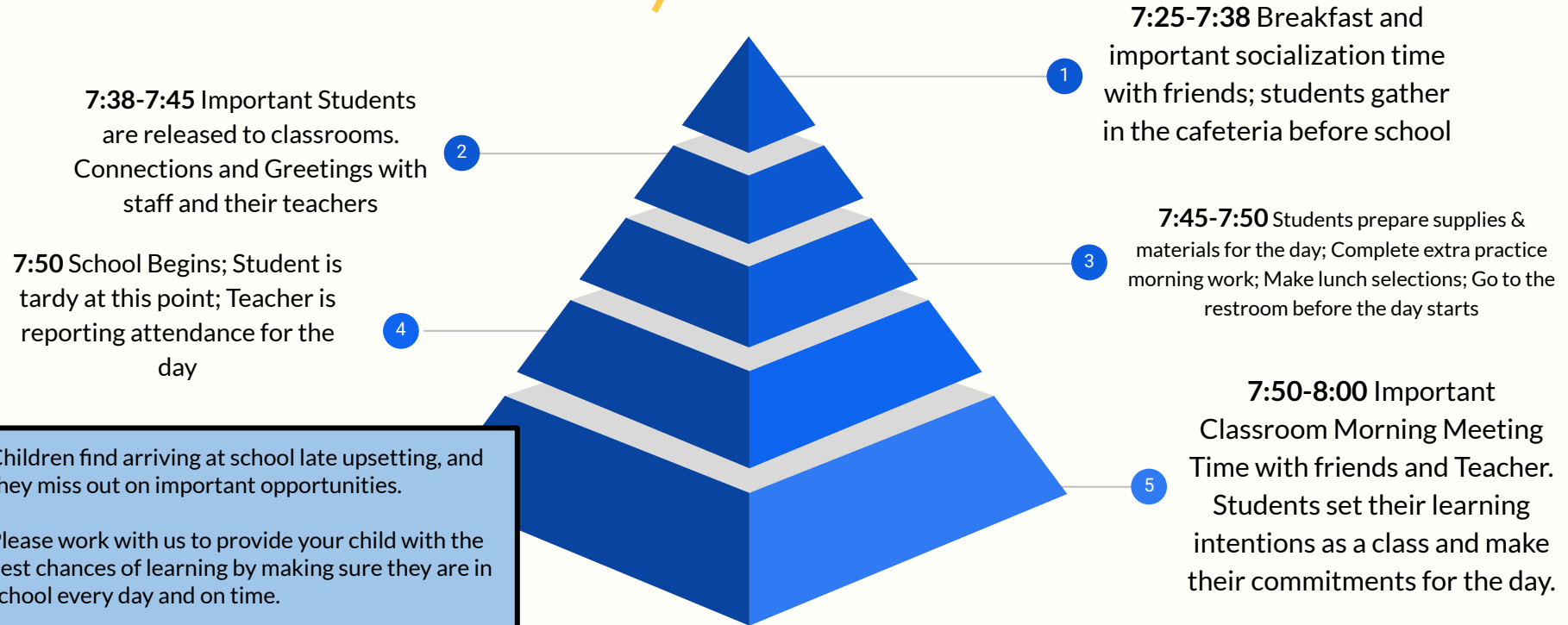
Students must be fever free for at least 24 hours before returning to school.

By law, we are legally required to report truancy to the proper authorities.



# Why Attendance Matters

Missing School = Missing Out  
Every Minute Counts



# Afternoon Dismissal



Important to have a consistent dismissal routine.

Transportation changes must be received by **2:00pm**. Early checkouts must take place in the front office by **2:20pm**. Please do not email the teacher with transportation changes.

- **Car Riders** – Dismissed using numbered placards
- **Walkers/ Bike Riders** – Dismissed at the crosswalks of Bright Rd; Avoid Neighborhood/ Street Parking & Pick-ups in vehicles
- **Front Entrance "Walk-Up" Pick-Ups** are not allowed. This is not a safe practice and you will be asked to return to your vehicle or head to the crosswalk for walkers.





# Report Cards and RTI

## Response to Intervention

### Teacherease Parent Guide

9 Week Reporting Period, per quarter

Mandatory Intervention & Enrichment included in daily schedule

Additionally, all classroom teachers provide small group instruction

Parent Notification - RTI

Parent Workshop Opportunities at Coffee with the Principal Sessions





# Parent Teacher Conferences

We provide late night P/T Conferences in person, twice a year.

Fall (October)

Spring (March)

P/T Conferences may be held at any point in the school year as needed.

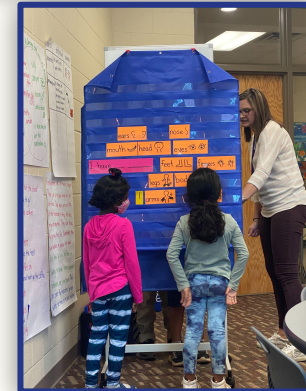
Who to Contact:

- **Request for 504 information:** Classroom Teacher & Mr. Matt Allen, 504 Designee
- **Request for Special Education information:** Classroom Teacher & Mrs. Andrea Yates, Special Education Lead
- **Request for Grade Acceleration information:** Classroom Teacher & Mrs. Christina Hamilton, Principal

# Curriculum

BSD curriculum that can be accessed by parents through the Bentonville Schools webpage.

Menu > Parents Tab > Curriculum > Elementary K-4



# Technology

## Acceptable Use Policies

1:1 Technology in BSD (Chromebooks)

Opportunities students will use chromebooks for instructional purposes in class:

- SeeSaw
- Google Suite
- Lexia Learning (Reading)
- DreamBox (Math)
- Reflex Math (3rd & 4th only)
- Various Specified apps provided by the teacher to enhance instruction



# Eating Lunch with your Child

Designated classroom tables are for students only.

- Important time for socializing and interacting with friends.
  - All visitors must present a state issued ID
  - Parents must remain in the cafeteria.
- Lunch is scheduled for 30 minutes. Please arrive at least 5 min before your students scheduled lunch time.
  - Adult restrooms are located in the teacher's lounge.
  - School age students visiting for lunch, is not allowed.
- Please do not photograph any students other than your own.

## Birthdays

We are unable to facilitate the distribution of birthday party invitations per our student handbook. Birthday class treats such as birthday stickers or birthday pencils are allowed. We are not allowed to distribute birthday food or candy of any kind.

## Lost & Found

Label Everything!

We donate items monthly to the DEB Project of Bentonville.



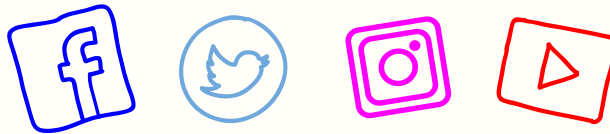


# THANKS



Do you have any questions?  
chamilton@bentonvillek12.org  
mallen@bentonvillek12.org  
479-418-7300

Find us on social media!



Have a Question?

<https://forms.gle/wVXTaqi61yVpszeYA>

