



# PLCs at Glen Oaks

“How is this leading to action to improve teacher and student learning?”



## Learning Intention

We are learning to develop a shared understanding of how we are a Professional Learning Community (PLC).


## Success Criteria

We can define PLC.

We can identify the three big ideas of a PLC.

We can explain the six characteristics of a PLC.

We can reflect on PLCs and think about the future.





**01**

**Data Overview**

**02**

**What is a PLC? & Why  
PLCs?**



**03**

**3 Big Ideas of a PLC**

**04**

**6 Essential  
Characteristics of a PLC**



The background features a variety of botanical and abstract elements. In the top left, there are brown leaf outlines and a small cluster of teal dots. The top right shows a large pink wavy shape with white concentric lines, a teal leaf, and a brown leaf. The bottom left has a brown leaf and a pink wavy shape with white lines. The bottom center features a brown leaf and a teal cactus-like shape with brown dots. The bottom right includes a pink wavy shape with white lines, a cluster of brown dots, and a brown leaf. Two solid brown circles are scattered in the center and bottom center.

# Our Data

Let's take a look...

# Scatter Plot

## Performance Scatterplots: IAR

This display shows how this school compares to other schools across the state on the Illinois Assessment of Readiness (IAR). The red triangle represents the selected school; black circles indicate other schools within the district at the level selected; light blue dots are all the other schools/districts in the state with the same selected grade levels. [Learn More](#) ▼

SELECT

Summary ▼

2019 ▼

Low Income ▼

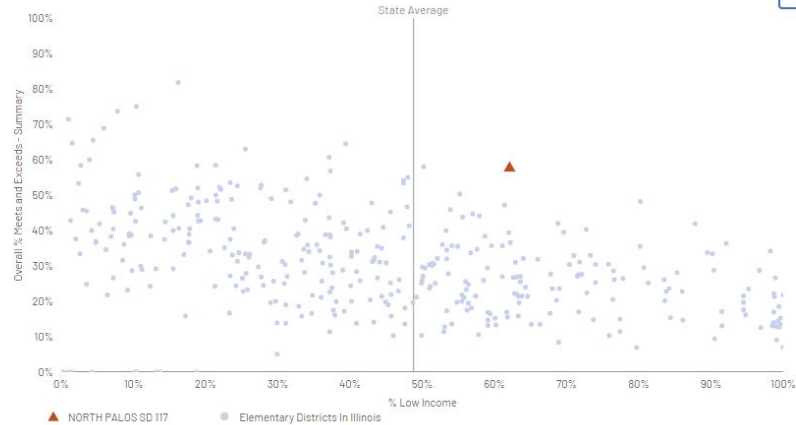
SUBJECT

ELA

Mathematics

More options

Summary ELA - % Low Income, 2019



## Performance Scatterplots: IAR

This display shows how this school compares to other schools across the state on the Illinois Assessment of Readiness (IAR). The red triangle represents the selected school; black circles indicate other schools within the district at the level selected; light blue dots are all the other schools/districts in the state with the same selected grade levels. [Learn More](#) ▼

SELECT

Summary ▼

2019 ▼

Low Income ▼

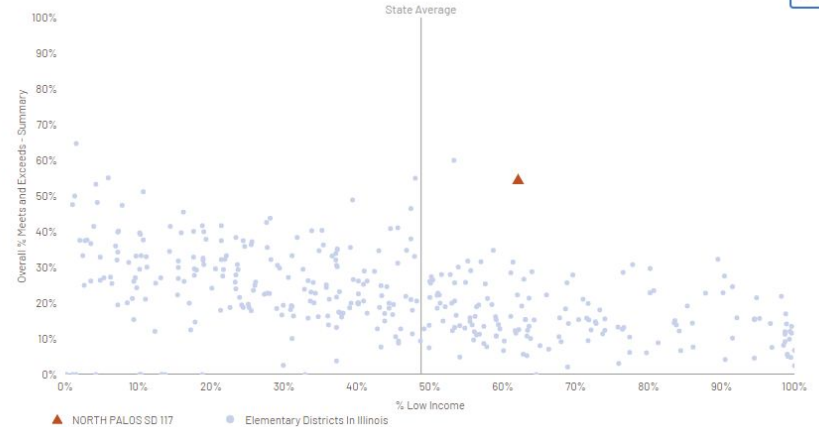
SUBJECT

ELA

Mathematics

More options

Summary Mathematics - % Low Income, 2019





# What and Why?

# What is a PLC?

- We are a Professional Learning Community (PLC) always
- A PLC is not just a meeting
- We have Data Team meetings as an important part of our Professional Learning Community
- “We collaboratively analyze student assessment information to drive student and teacher learning.”



# Here is What Experts Say?

<https://www.allthingsplc.info/files/uploads/AdvocatesforPLCs-Updated11-9-15.pdf>





# John Hattie's Work





# 3 Big Ideas of a PLC

# 3 Big Ideas of a PLC

**Focus on Learning**

**Build a Collaborative  
Culture**

**Focus on Results**



Students, write your response!

Pear Deck Interactive Slide  
Do not remove this bar

# 3 Big Ideas of a PLC

## Focus on Learning

- High levels of learning for ALL students
- Four critical PLC questions

## Build a Collaborative Culture

- ~~Isolation~~
- Learn from each other

## Focus on Results

- Results not intentions
- Continually assess impact
- DATA



# 6 Essential Characteristics of a PLC



# 6 Essential Characteristics of a PLC

## Shared Mission, Vision, Value, & Goals

- Clarity of shared purpose & common understanding

## Action Orientation and Experimentation

- Turn learning into action
- Learn by doing
- “How can this meeting improve student learning?”

## Collaborative Teams Focused on Learning

- Common goals & are mutually accountable
- Results directed team norms

## Commitment to Continuous Improvement

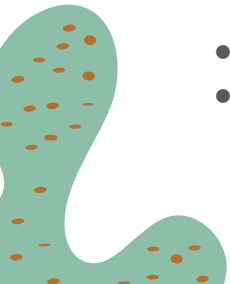
- Constantly seek better ways to achieve goals
- Data

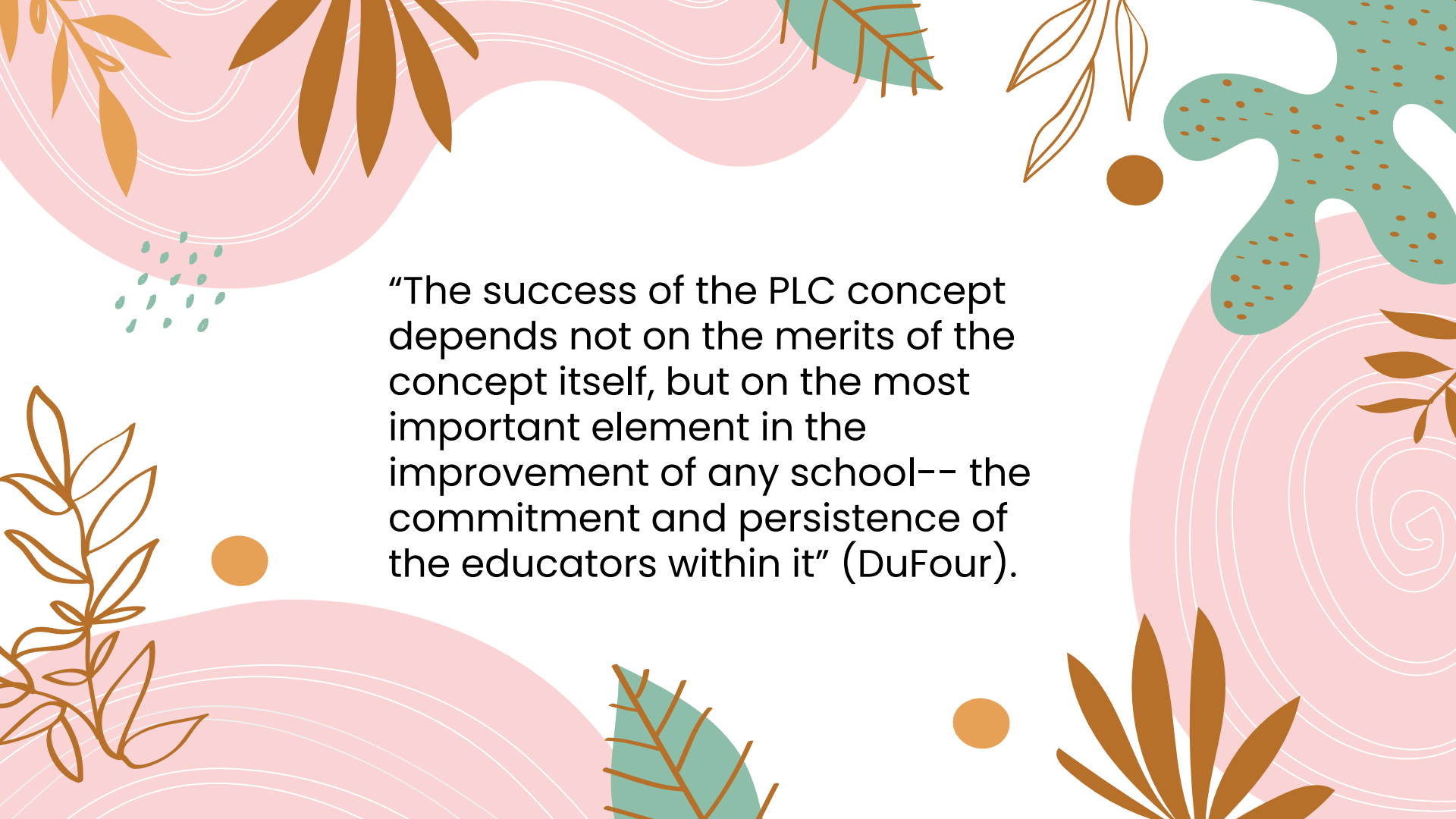
## Collective Inquiry

- Question status quo
- Seek new methods, test them, then reflect

## Results Orientation

- Hungry for evidence and use it to improve practice





“The success of the PLC concept depends not on the merits of the concept itself, but on the most important element in the improvement of any school-- the commitment and persistence of the educators within it” (DuFour).



# Survey