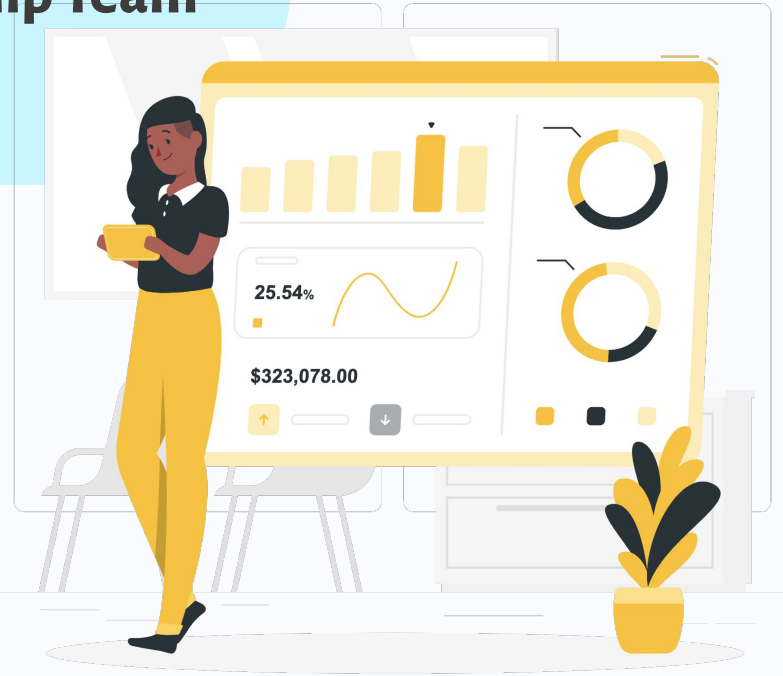


# School Data Updates

## Sovereign Avenue School Leadership Team

### March 4, 2021

[Sign-In](#)



# Session Outcomes

**01**

## **Prerequisite Concepts and Skills in ELA and Math**

Examine state  
resources for use  
in PLC's

**02**

## **Progress on School Goals**

Look at EOC 2  
progress on  
school-wide  
SMART goals.

**03**

## **Data Card**

Examine  
information on the  
school data card

**04**

## **PLC's**

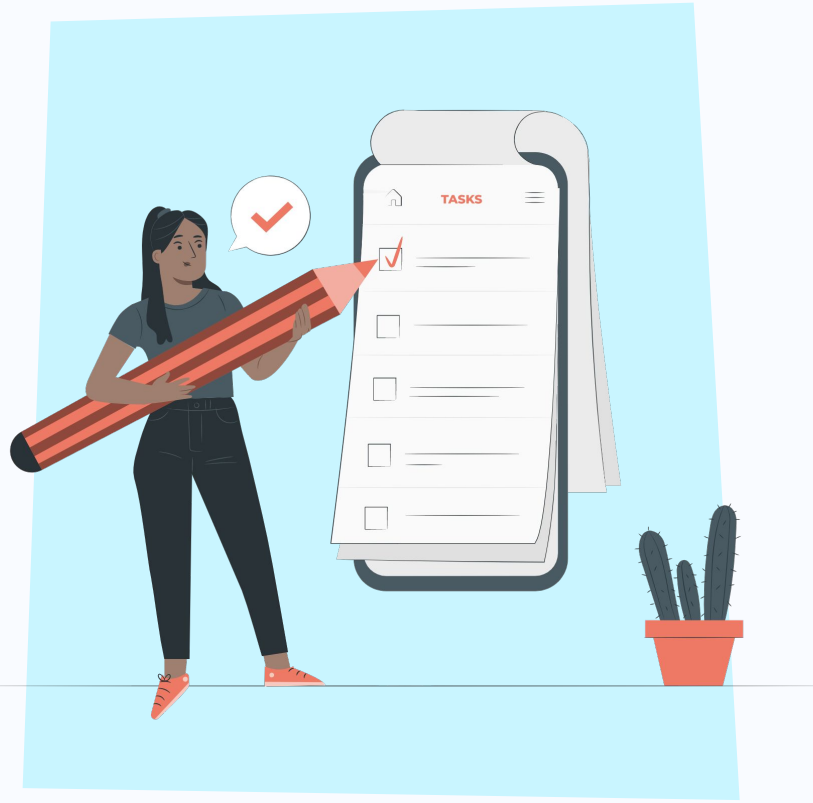
PLC updates and  
work

## Prerequisite Concepts and Skills

Examine the NJDOE resources

- First Grade Unit 3
- First Grade Unit 4





02

## EOC 2 Data

## **ELA SMART Goal - EOC 2**

By February 15, 2021, 60% of students at the Sovereign Avenue School will be at or above the 40% progress to annual typical growth mark in reading as measured by the iReady Reading Diagnostic Assessment.

## **Our Progress**

45% of students were at or above the 40% progress to annual typical growth mark in reading as measured by the iReady Reading Diagnostic Assessment. Concerns regarding the accuracy of this data due to the assessment being administered remotely, initial inflation of test scores and not 100% participation.

## **Math SMART Goal - EOC 2**

By February 15, 2021, 60% of students at the Sovereign Avenue School will be at or above the 40% progress to annual typical growth mark as measured by the iReady Math Diagnostic Assessment.

## **Our Progress**

45% of students were at or above the 40% progress to annual typical growth mark in math as measured by the iReady Math Diagnostic Assessment. Concerns regarding the accuracy of this data due to the assessment being administered remotely, initial inflation of test scores and not 100% participation.

## **Chronic Absenteeism SMART Goal - EOC 2**

Sovereign Avenue School grades K-8 will have no more than 8% chronic absenteeism for the months of September-January.

## **Our Progress**

20% Chronically Absent as of Jan. 31. Grade 1 (22.1%) and grade 7 (25.5%) remain an issue. Remote instruction most of the time due to Covid, and issues with consistent attendance remain.

## **Social Emotional Learning SMART Goal - EOC 2**

By February 15, 2021, 20% of  
teaching staff at Sovereign  
Avenue

School will implement at least  
1-2 evidence-based strategies as  
contained in the social emotional  
learning scope and sequence as  
measured by an implementation  
checklist.

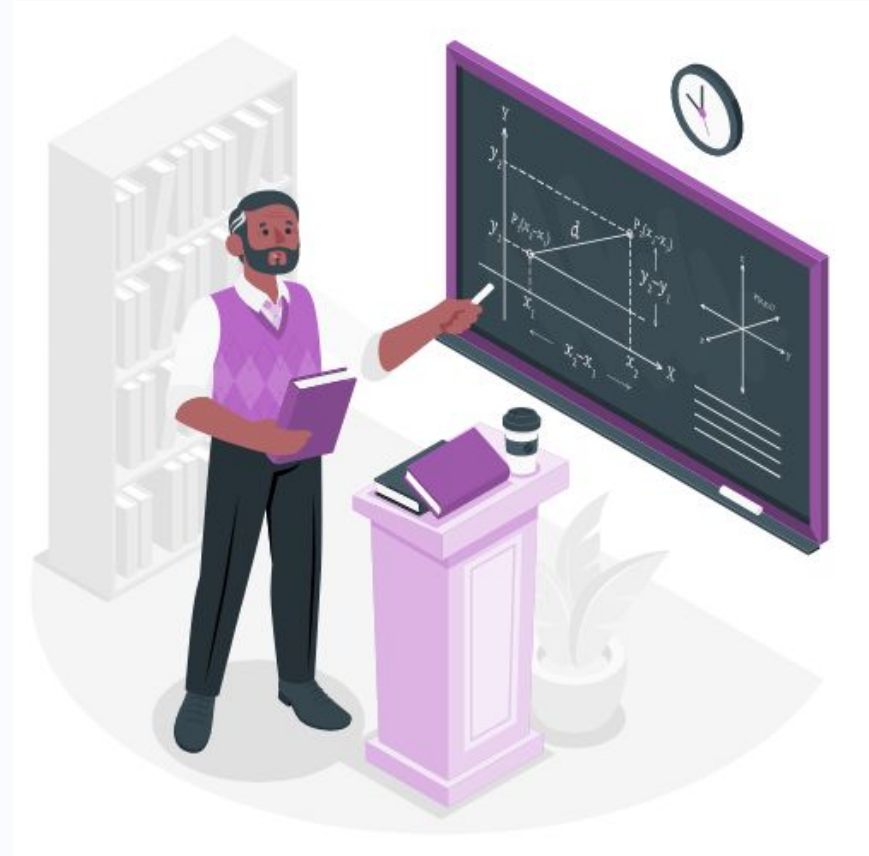
## **Our Progress**

Based on survey data, 51.2% of  
staff are implementing 1-2  
strategies, 29.3% are  
implementing 3-4 strategies, and  
19.5% are implementing 5+  
strategies.



# School Data Card

- The Leadership Team at each school works to collect data in a number of areas:
  - PLC's
  - iready
  - iXL
  - Dreambox
  - Chronic Absenteeism
  - District SMART Goals





**Thank you for  
all you do!**