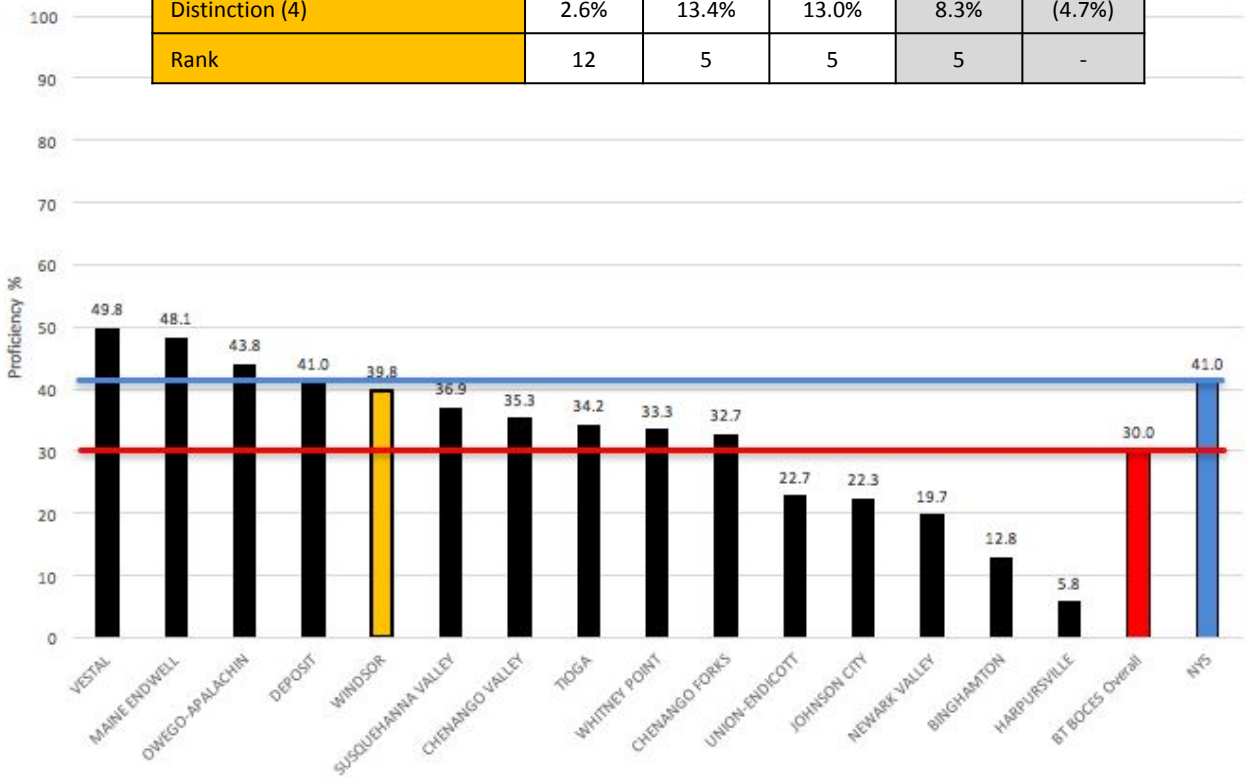


District Performance Measures 2016-2017

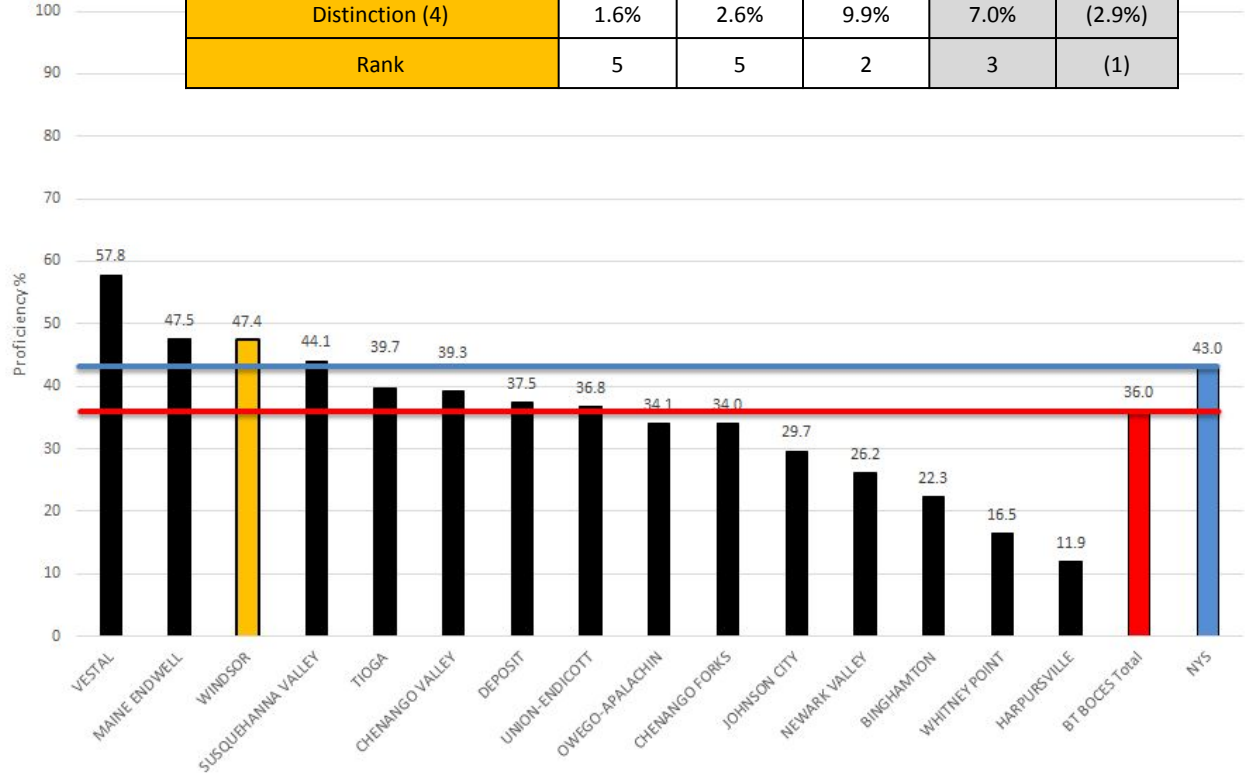


4th GRADE ELA	13-14	14-15	15-16	16-17	+ or -
Proficiency (3, 4)	22.4%	36.1%	43.1%	39.8%	(3.3%)
Distinction (4)	2.6%	13.4%	13.0%	8.3%	(4.7%)
Rank	12	5	5	5	-



Windsor Central School District – Home of the Black Knights

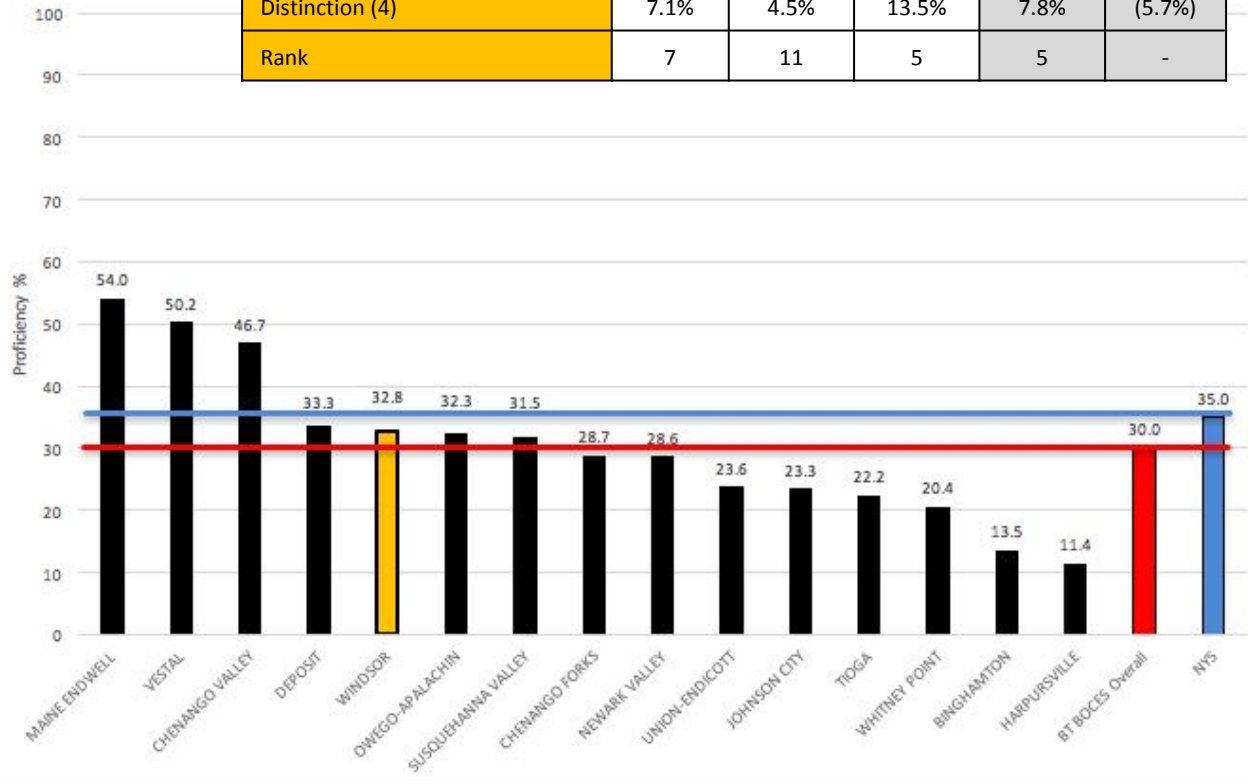
3rd GRADE ELA	13-14	14-15	15-16	16-17	+ or -
Proficiency (3, 4)	33.6%	33.3%	50.4%	47.4%	(3.0%)
Distinction (4)	1.6%	2.6%	9.9%	7.0%	(2.9%)
Rank	5	5	2	3	(1)



Windsor Central School District – Home of the Black Knights



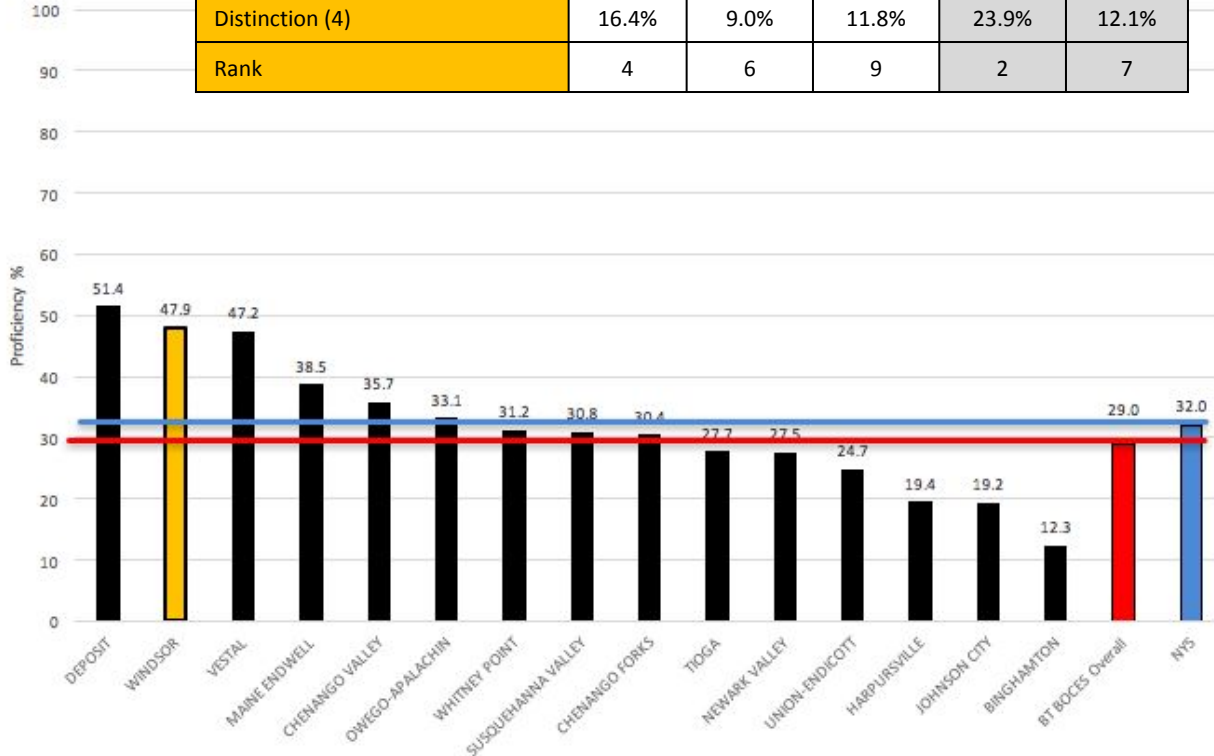
5th GRADE ELA	13-14	14-15	15-16	16-17	+ or -
Proficiency (3, 4)	25.5%	19.1%	37.3%	32.8%	(4.5%)
Distinction (4)	7.1%	4.5%	13.5%	7.8%	(5.7%)
Rank	7	11	5	5	-



Windsor Central School District – Home of the Black Knights



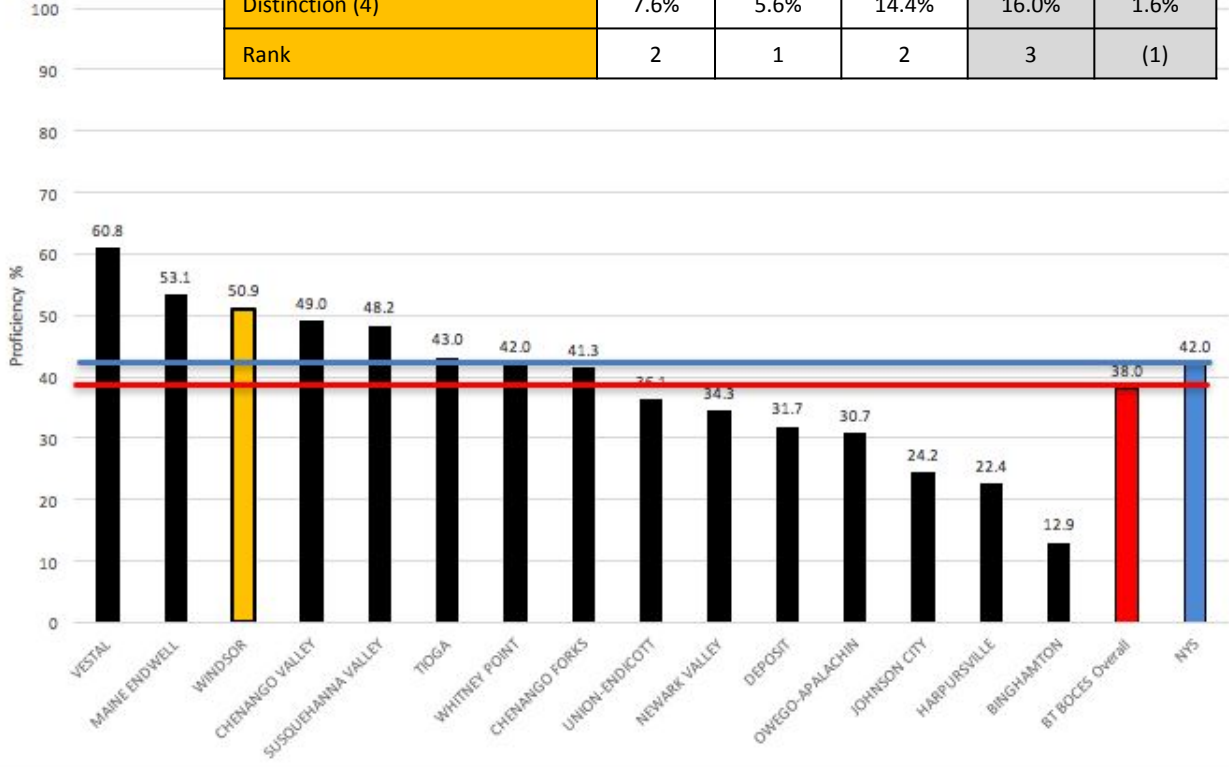
6th GRADE ELA	13-14	14-15	15-16	16-17	+ or -
Proficiency (3, 4)	33.6%	33.7%	26.3%	47.9%	21.6%
Distinction (4)	16.4%	9.0%	11.8%	23.9%	12.1%
Rank	4	6	9	2	7



Windsor Central School District – Home of the Black Knights



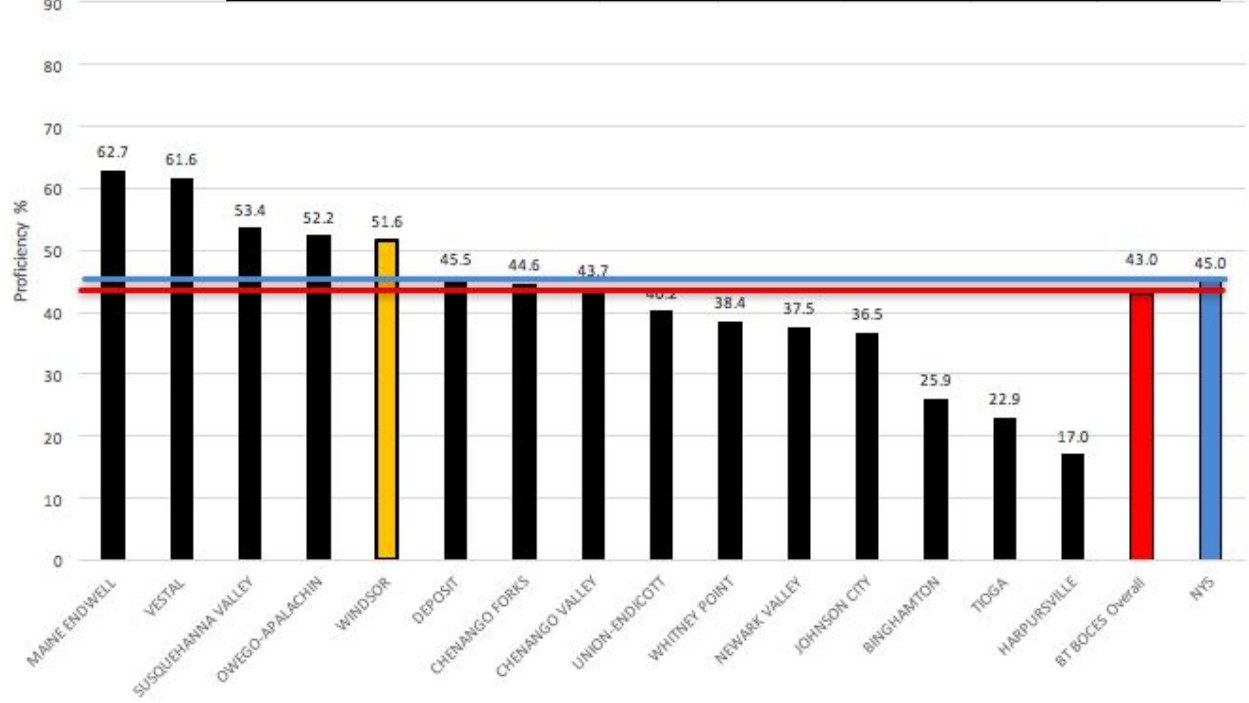
7th GRADE ELA	13-14	14-15	15-16	16-17	+ or -
Proficiency (3, 4)	35.2%	48.1%	50.5%	50.9%	0.4%
Distinction (4)	7.6%	5.6%	14.4%	16.0%	1.6%
Rank	2	1	2	3	(1)



Windsor Central School District – Home of the Black Knights



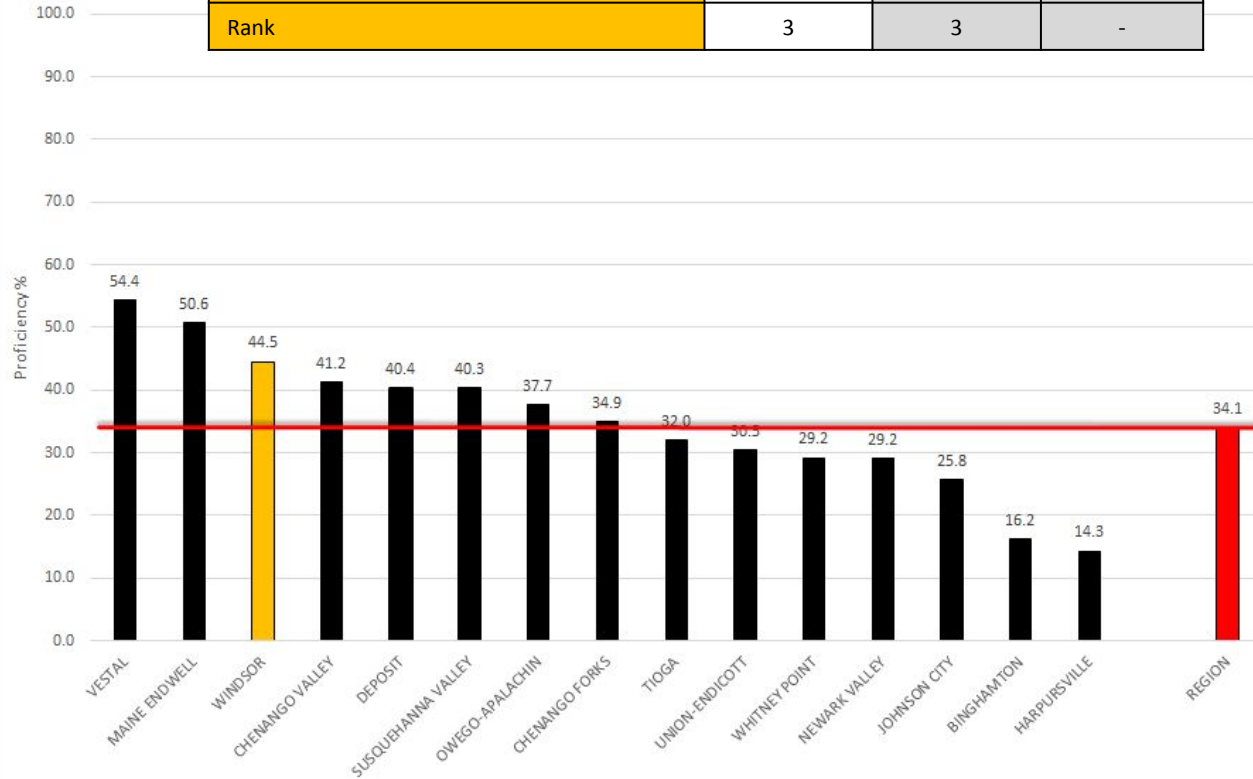
8th GRADE ELA	13-14	14-15	15-16	16-17	+ or -
Proficiency (3, 4)	27.4%	45.5%	51.4%	51.6%	0.2%
Distinction (4)	5.9%	21.6%	11.0%	18.9%	7.9%
Rank	11	3	2	5	(3)



Windsor Central School District – Home of the Black Knights



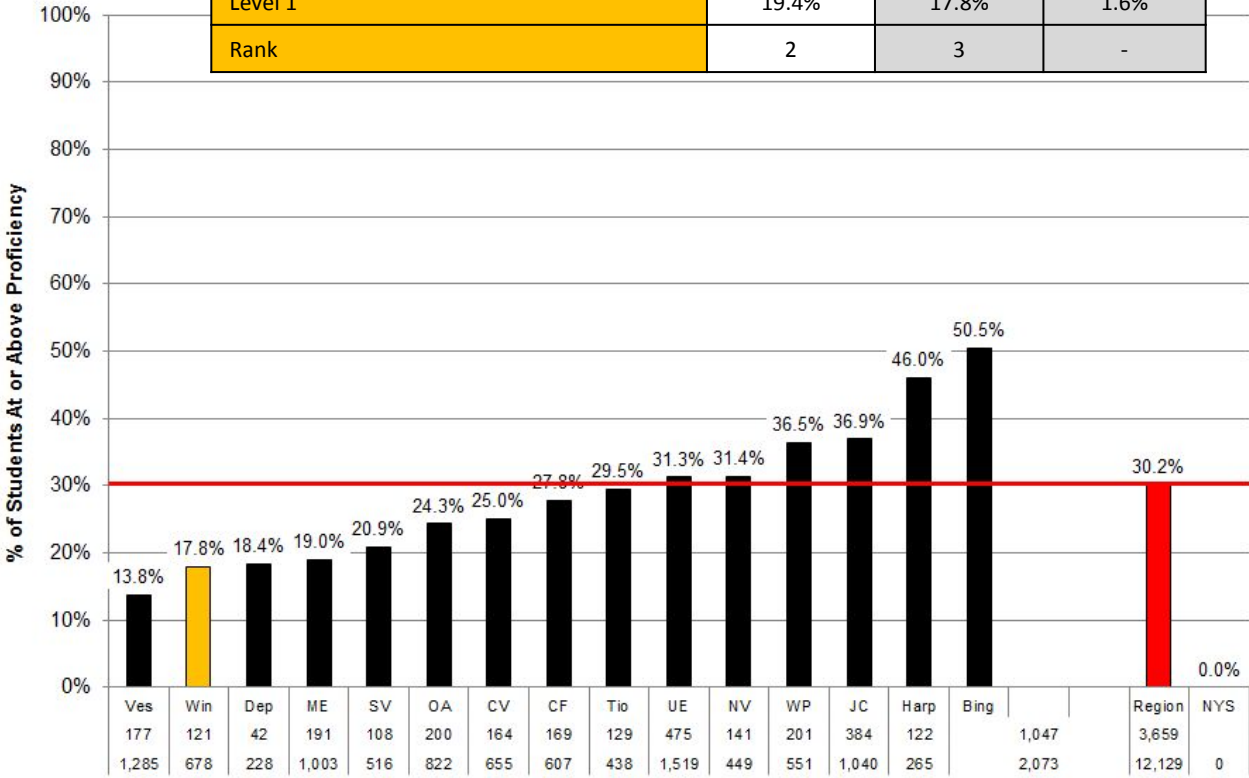
3 - 8 ELA Assessment	15-16	16-17	+ or -
Proficiency (3, 4)	42.9%	44.5%	1.6%
Rank	3	3	-



Windsor Central School District – Home of the Black Knights



3 - 8 ELA Assessment	15-16	16-17	+ or -
Level 1	19.4%	17.8%	1.6%
Rank	2	3	-



177	121	42	191	108	200	164	169	129	475	141	201	384	122				1,047	3,659	
1,285	678	228	1,003	516	822	655	607	438	1,519	449	551	1,040	265				2,073	12,129	0

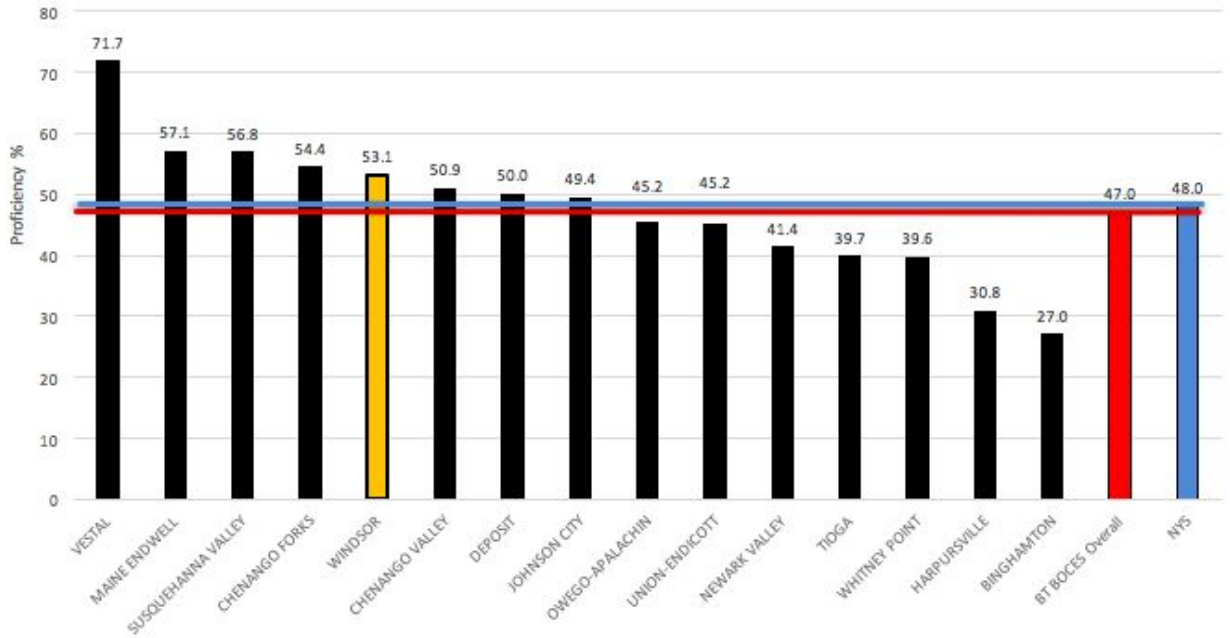
Districts & Number of Students Tested

Sources: L2RPT Tested/NotTested



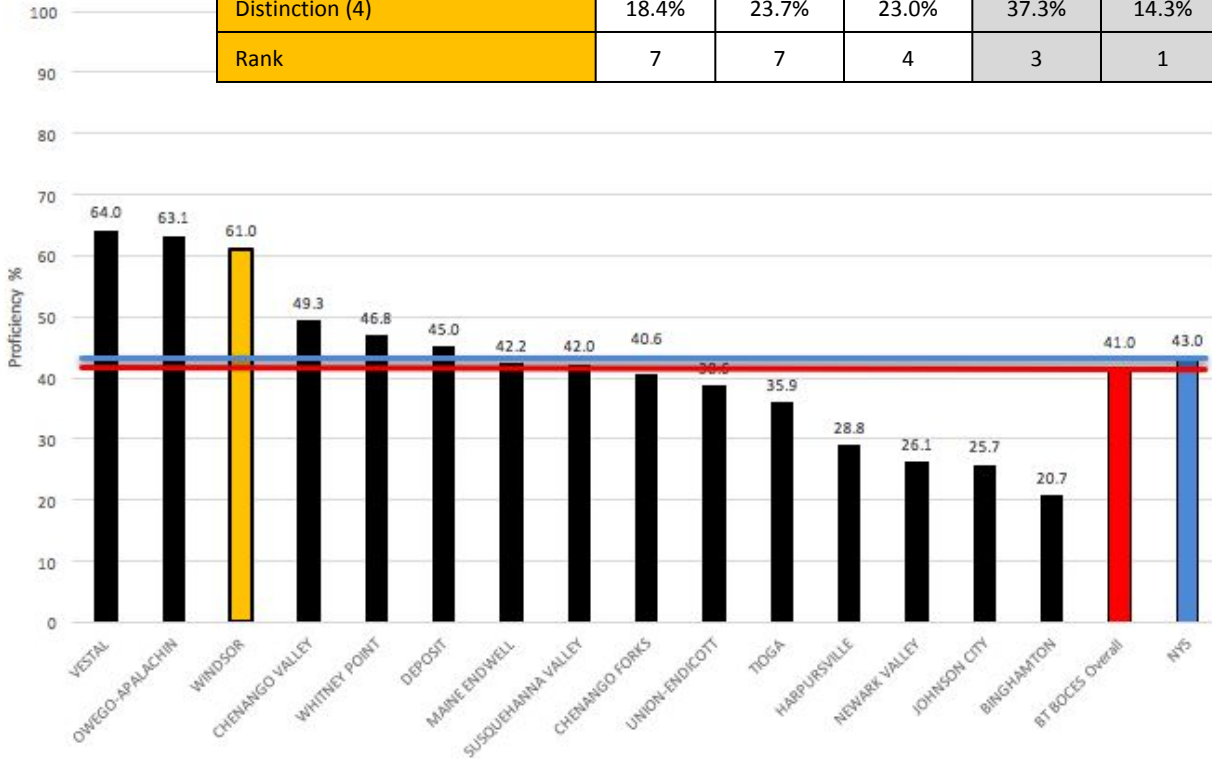
Windsor Central School District – Home of the Black Knights

3rd GRADE MATH	13-14	14-15	15-16	16-17	+ or -
Proficiency (3, 4)	55.7%	54.9%	61.4%	53.1%	(8.3%)
Distinction (4)	18.9%	15.9%	22.1%	18.6%	(3.5%)
Rank	3	5	2	5	(3)



Windsor Central School District – Home of the Black Knights

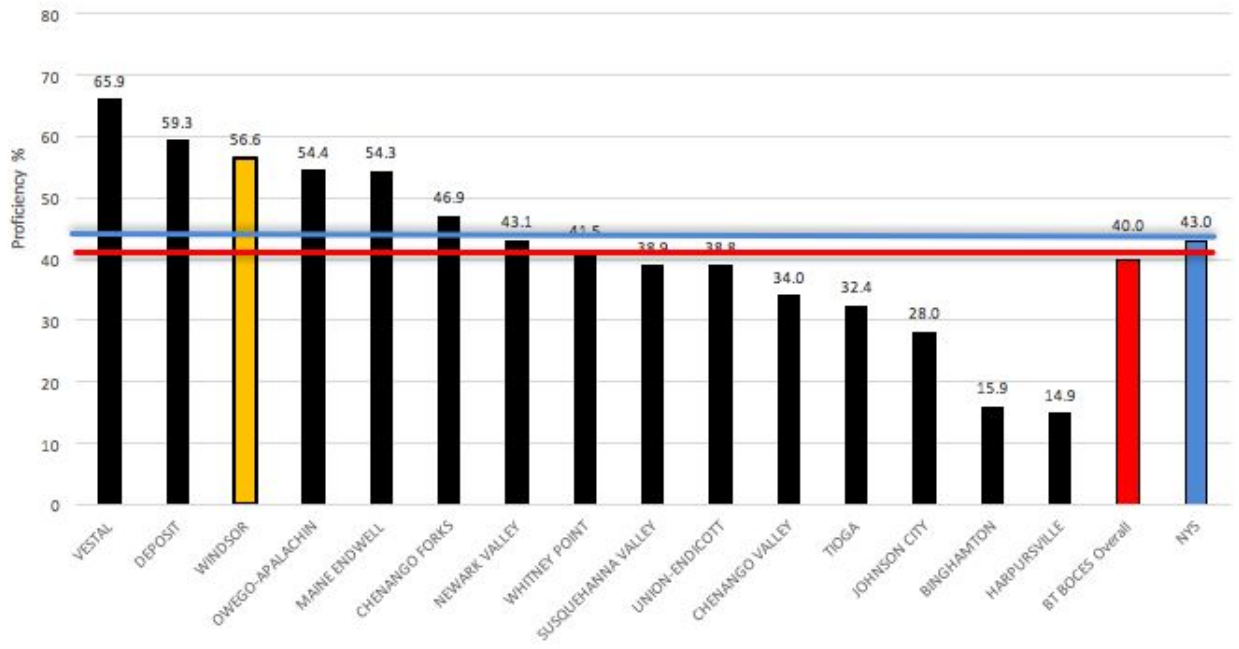
4th GRADE MATH	13-14	14-15	15-16	16-17	+ or -
Proficiency (3, 4)	47.4%	54.2%	62.3%	61.0%	(1.3%)
Distinction (4)	18.4%	23.7%	23.0%	37.3%	14.3%
Rank	7	7	4	3	1



Windsor Central School District – Home of the Black Knights



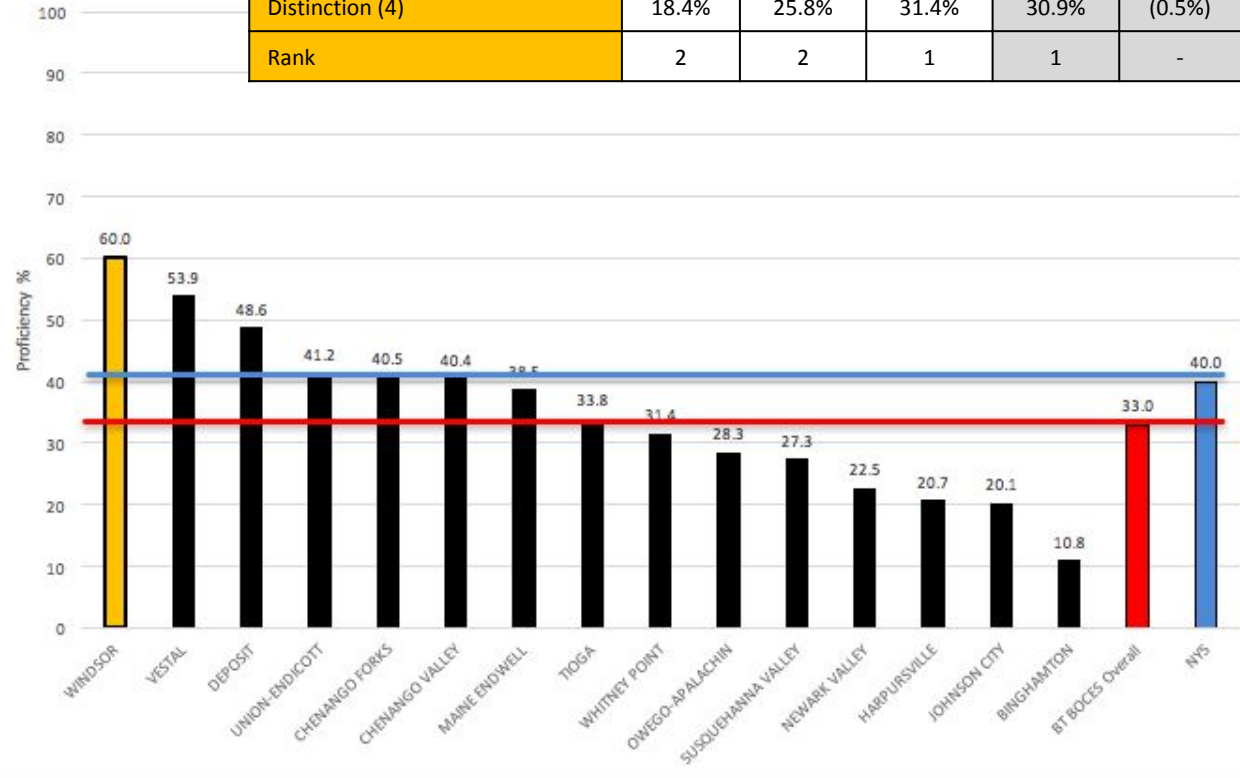
5th GRADE MATH	13-14	14-15	15-16	16-17	+ or -
Proficiency (3, 4)	64.6%	57.8%	56.6%	56.6%	-
Distinction (4)	22.9%	21.1%	20.5%	10.9%	(9.6%)
Rank	1	2	2	3	(1)



Windsor Central School District – Home of the Black Knights



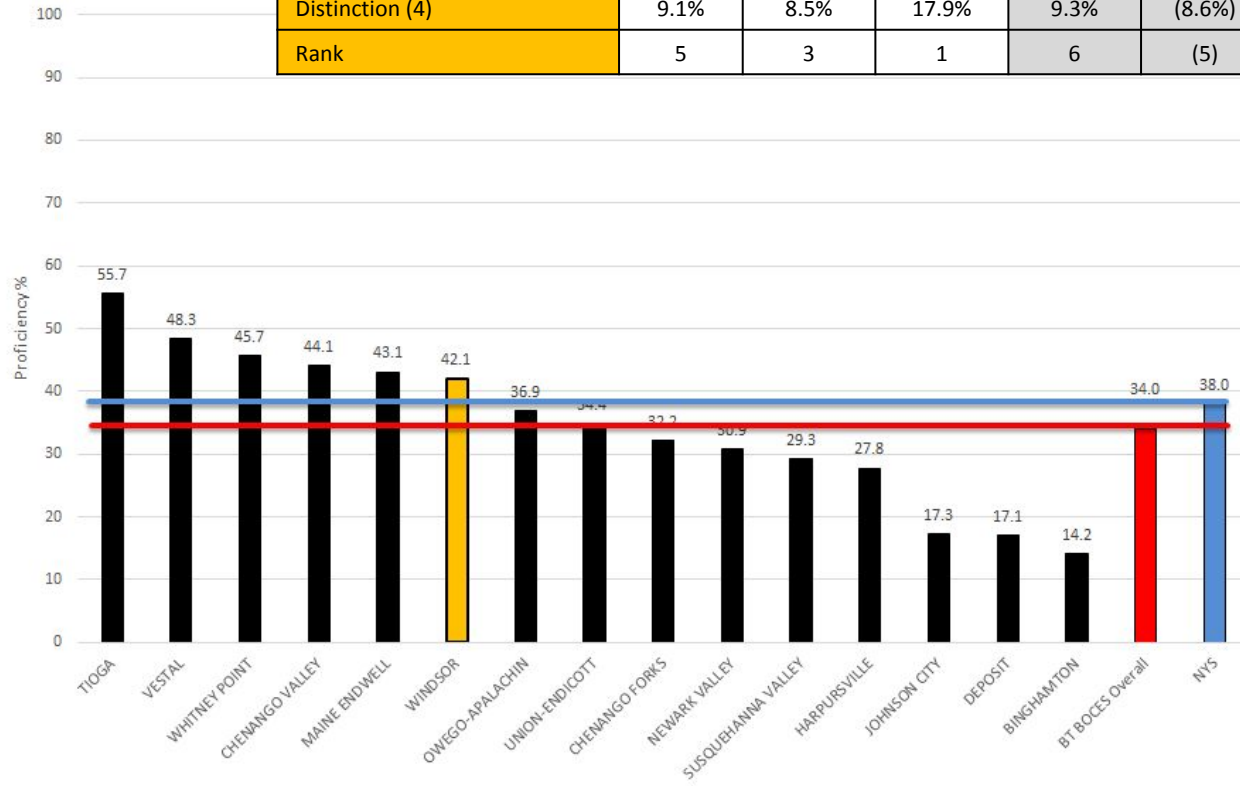
6th GRADE MATH	13-14	14-15	15-16	16-17	+ or -
Proficiency (3, 4)	46.5%	57.3%	68.5%	60.0%	(8.5%)
Distinction (4)	18.4%	25.8%	31.4%	30.9%	(0.5%)
Rank	2	2	1	1	-



Windsor Central School District – Home of the Black Knights



7th GRADE MATH	13-14	14-15	15-16	16-17	+ or -
Proficiency (3, 4)	31.5%	41.5%	52.6%	42.1%	(10.5%)
Distinction (4)	9.1%	8.5%	17.9%	9.3%	(8.6%)
Rank	5	3	1	6	(5)

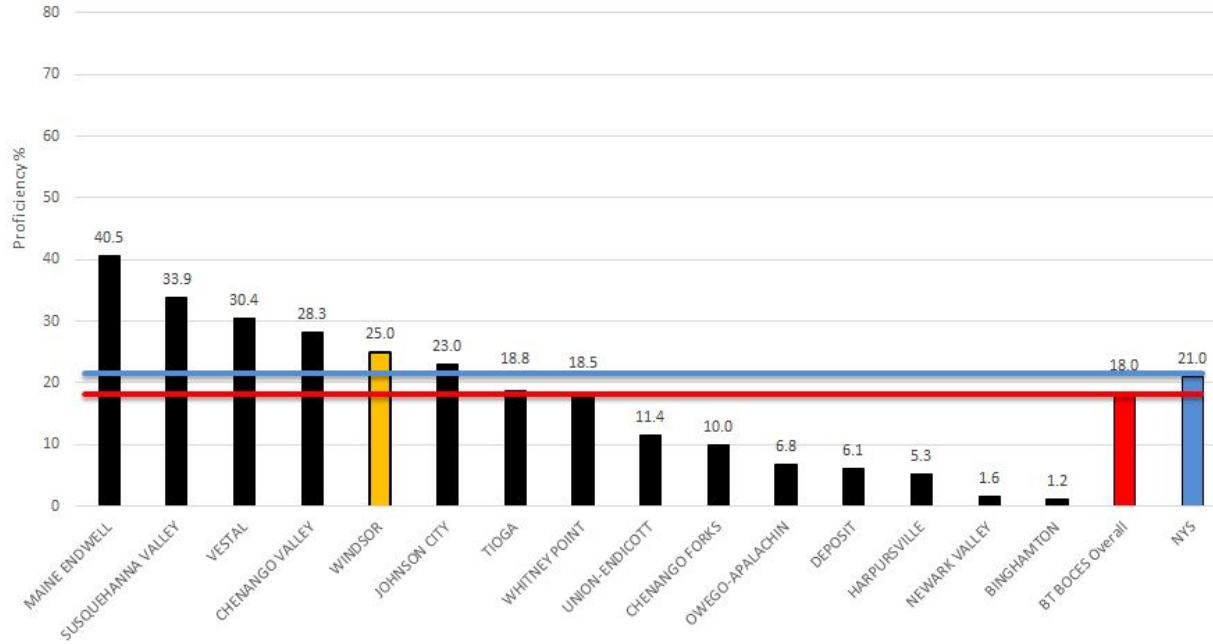


Windsor Central School District – Home of the Black Knights



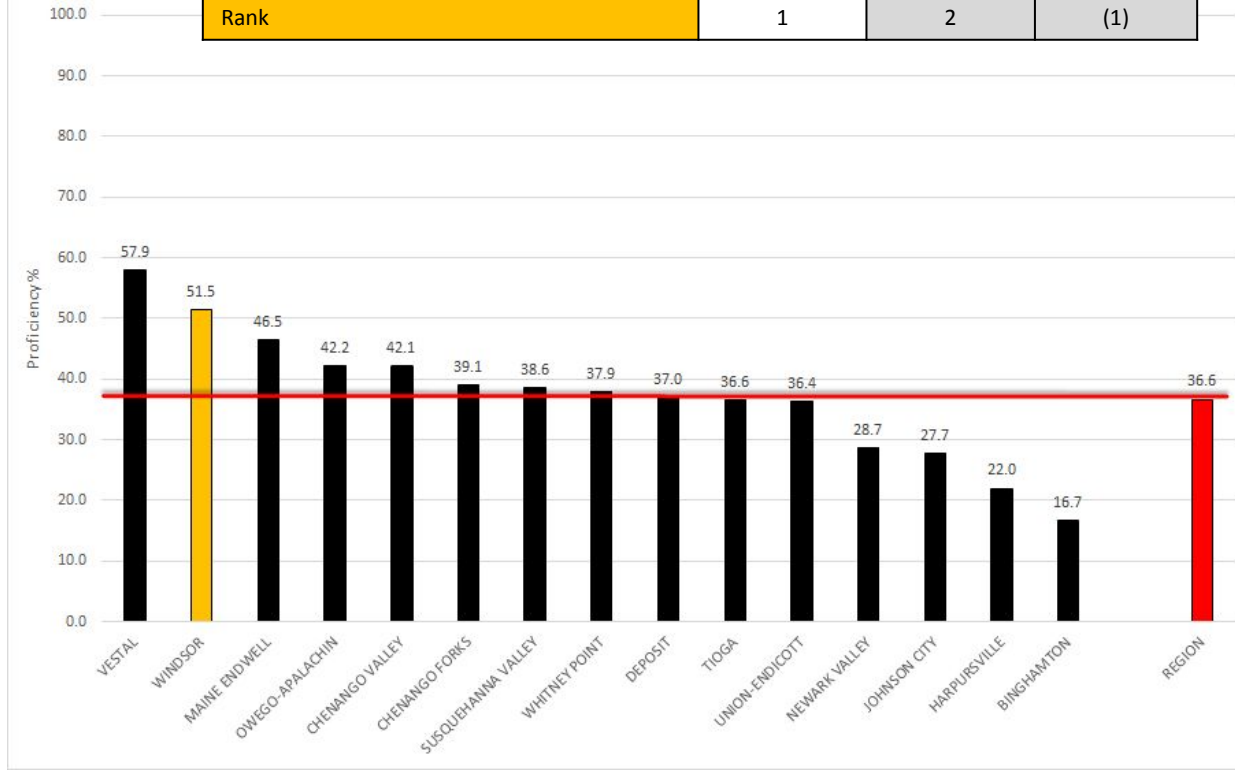
GRAPH DEPICTS 8TH GRADE NYS ASSESSMENT ONLY

8th GRADE MATH	13-14	14-15	15-16	16-17	+ or -
Proficiency (3, 4)	16.0%	14.9%	12.9%	25.0%	12.1%
Distinction (4)	0.0%	0.0%	0.00%	1.4%	1.4%
Rank	7	10	8	5	3



Windsor Central School District – Home of the Black Knights

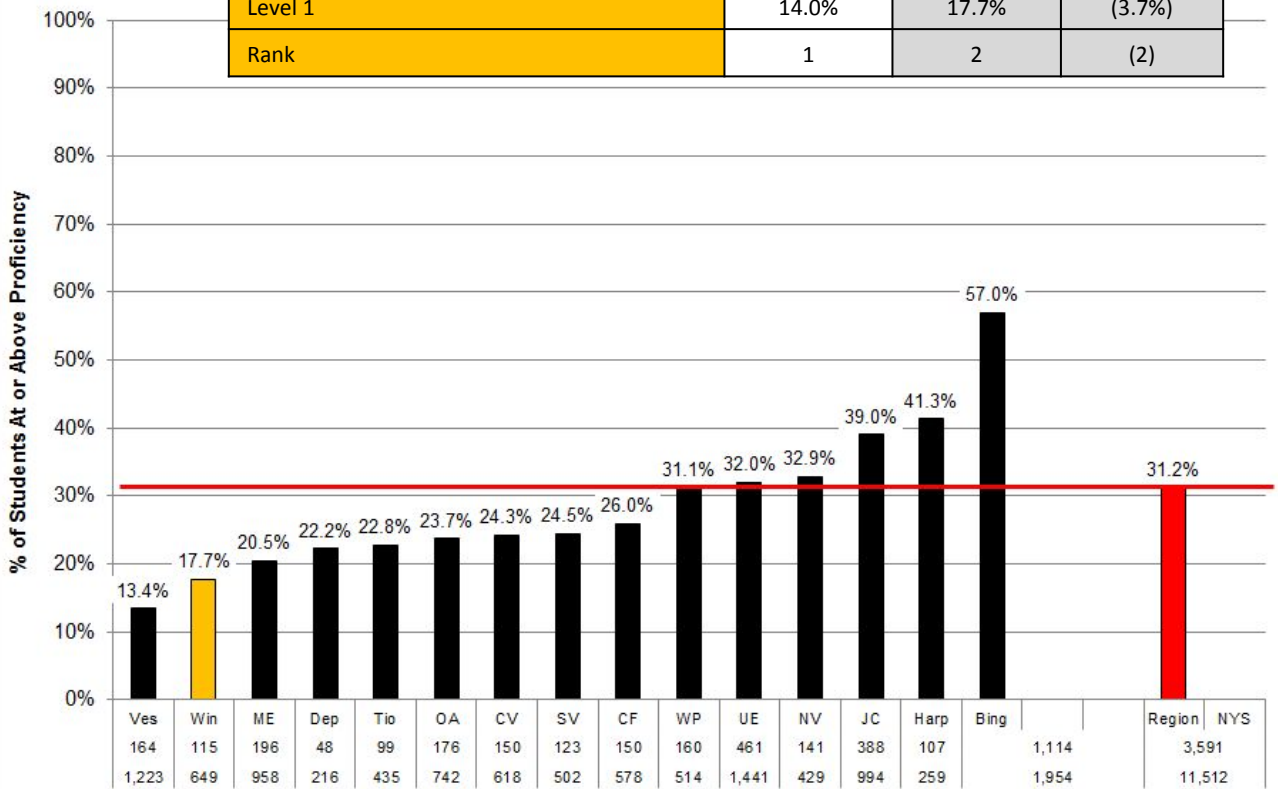
3 - 8 Math Assessment	15-16	16-17	+ or -
Proficiency (3, 4)	55.6%	51.5%	(4.1%)
Rank	1	2	(1)



Windsor Central School District – Home of the Black Knights



3 - 8 Math Assessment	15-16	16-17	+ or -
Level 1	14.0%	17.7%	(3.7%)
Rank	1	2	(2)



District	Tested	Not Tested
Ves	164	1,223
Win	115	649
ME	196	958
Dep	48	216
Tio	99	435
OA	176	742
CV	150	618
SV	123	502
CF	150	578
WP	160	514
UE	461	1,441
NV	141	429
JC	388	994
Harp	107	259
Bing	1,114	1,954
Region	3,591	11,512
NYS		

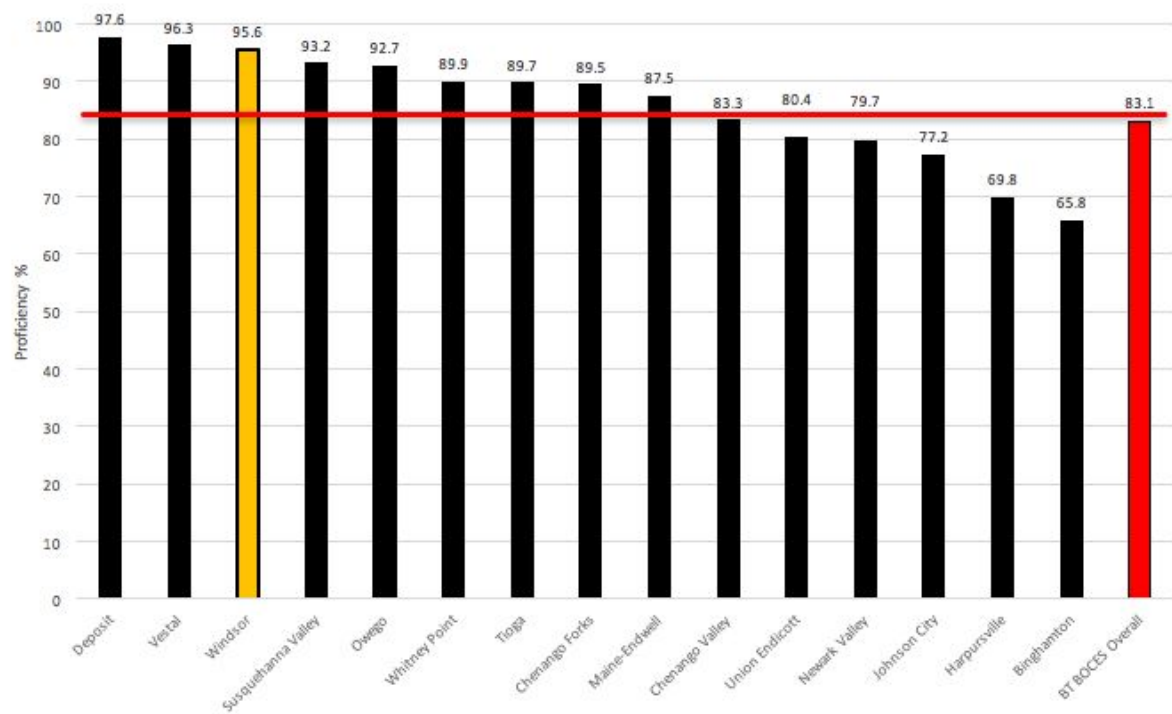
Districts & Number of Students Tested

Sources L2RPT Tested/Not Tested



Windsor Central School District – Home of the Black Knights

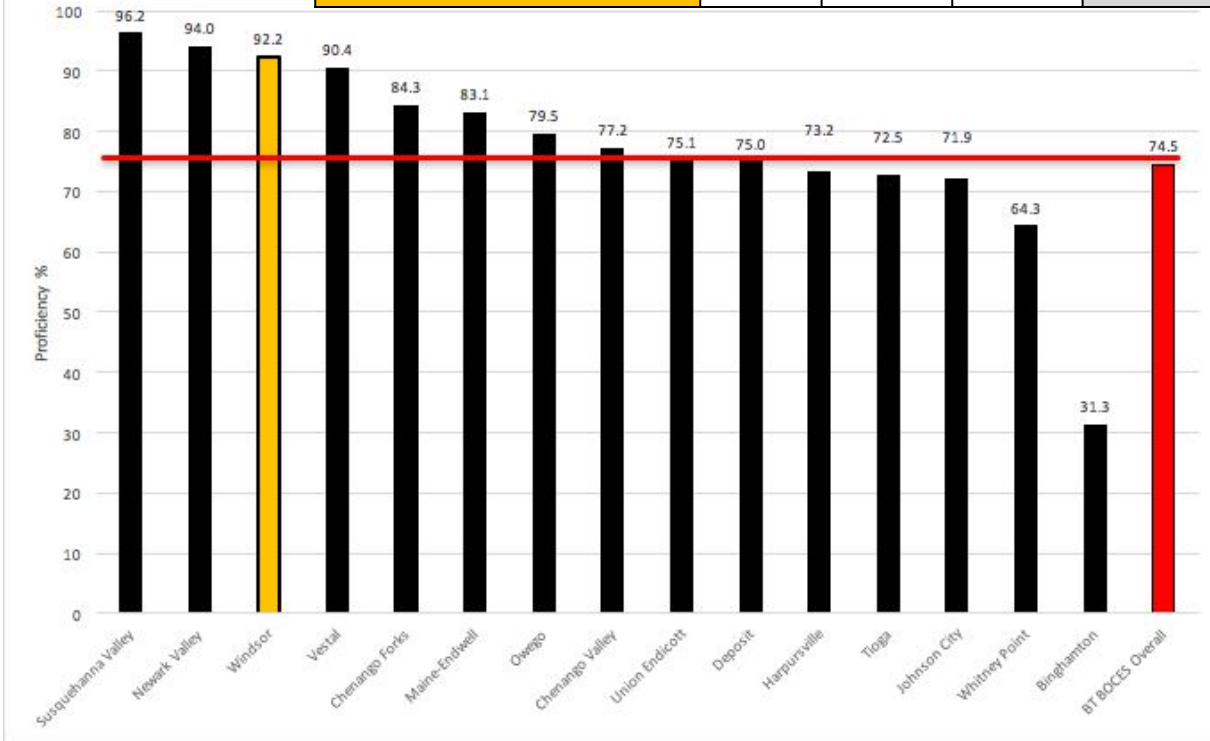
4th GRADE SCIENCE	13-14	14-15	15-16	16-17	+ or -
Proficiency (3, 4)	94.8%	97.6%	100.0%	95.6%	(3.4%)
Distinction (4)	77%	72.2%	76.8%	NA	NA
Rank	3	2	1	3	(2)



Windsor Central School District – Home of the Black Knights



8th GRADE SCIENCE		13-14	14-15	15-16	16-17	+ or -
Br	Proficiency (3, 4)	91.5%	94.5%	93.8%	92.2%	(1.6%)
	Distinction (4)	44%	53.1%	55.4%		
	Rank	1	2	1	3	(2)

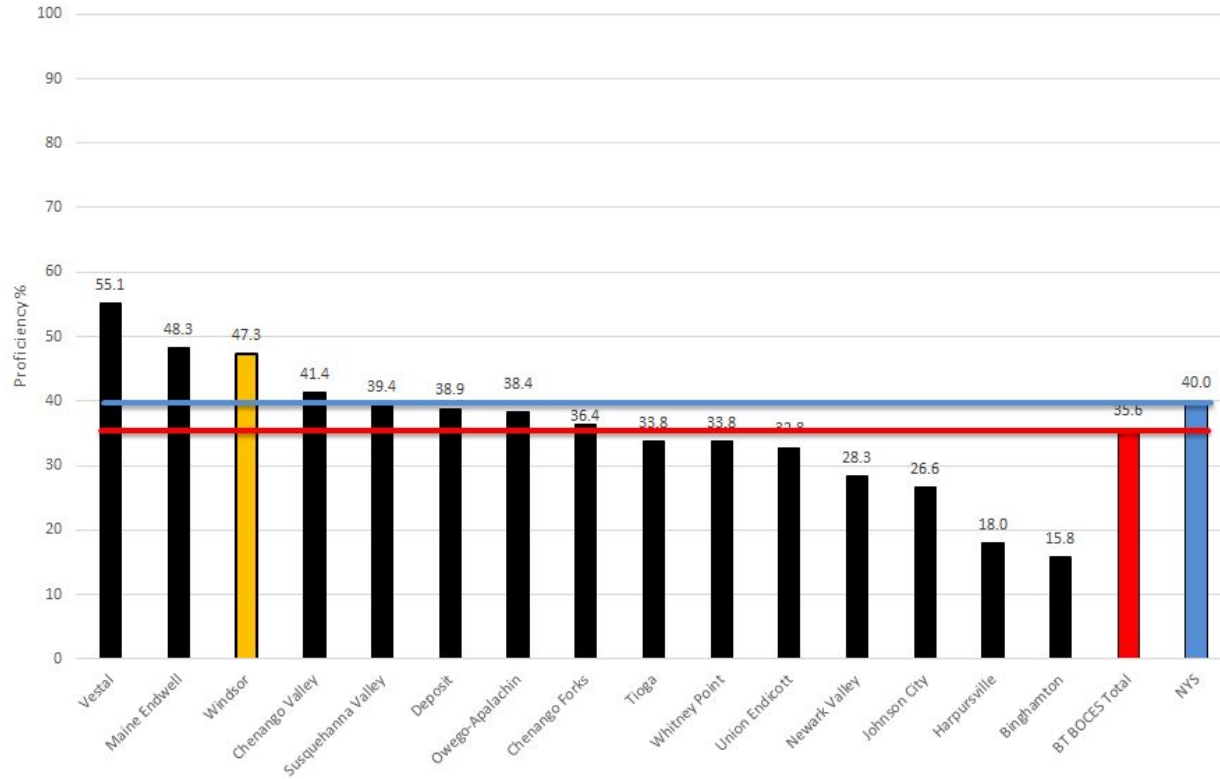


Windsor Central School District – Home of the Black Knights

Broome-Tioga BOCES Component School Districts

Grades 3-8 ELA and Math Proficiency

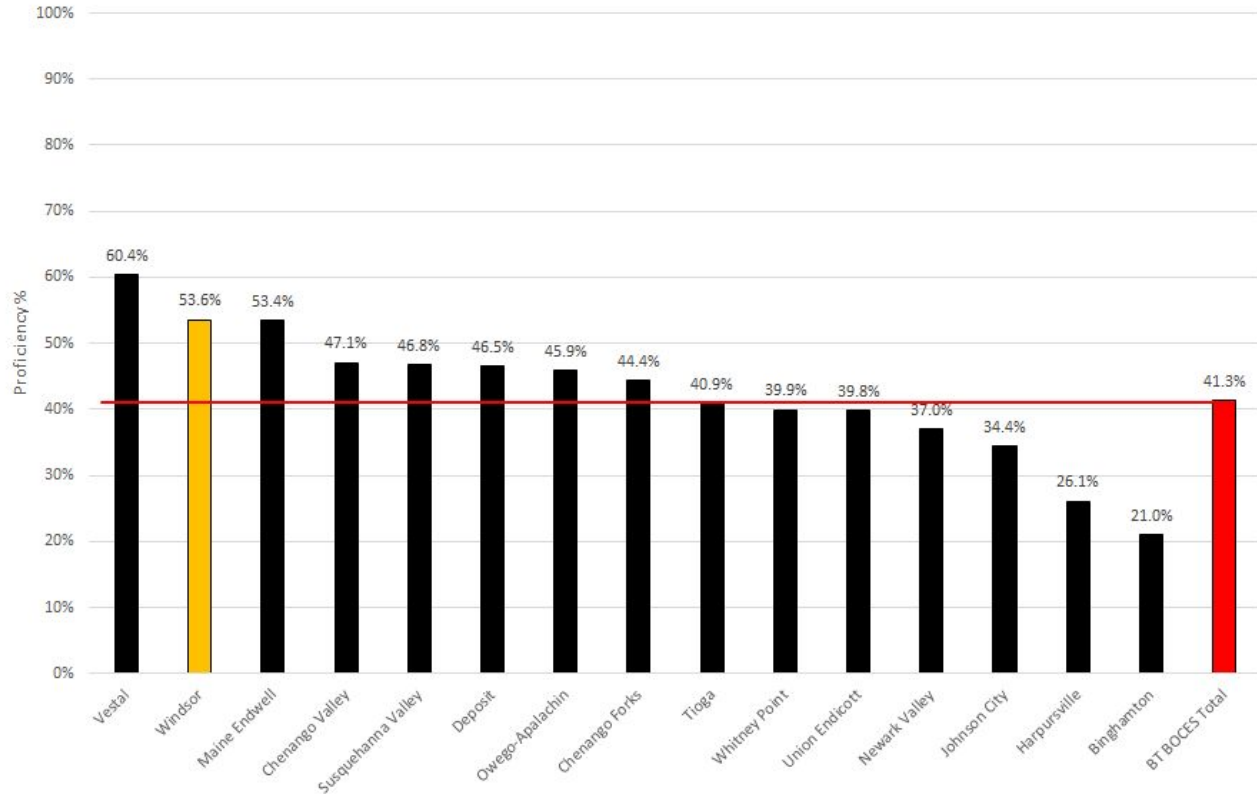
2016-17



Windsor Central School District – Home of the Black Knights



Broome-Tioga BOCES Component School Districts
Grades 3-8 ELA, Math and Science Proficiency
2016-17



Windsor Central School District – Home of the Black Knights

GRADUATION CLASS	ASSESSMENT	COHORT PROFICIENCY CHANGE
2027		
2026	ELA 3 to 4	-10.6%
2025	ELA 4 to 5	-10.3%
2024	ELA 5 to 6	10.6%
2023	ELA 6 to 7	24.6%
2022	ELA 7 to 8	0.1%

GRADUATION CLASS	ASSESSMENT	COHORT PROFICIENCY CHANGE
2027		
2026	Math 3 to 4	-0.4%
2025	Math 4 to 5	-5.7%
2024	Math 5 to 6	3.4%
2023	Math 6 to 7	-26.4%
2022	Math 7 to 8	-27.6%



3 - 8 Mean Rankings

3 - 8 NYS Assessments	05-06 Rank	06-07 Rank	07-08 Rank	08-09 Rank	09-10 Rank	10-11 Rank	11-12 Rank	12-13 Rank	13-14 Rank	14-15 Rank	15-16 Rank	16-17 Rank
Third Grade ELA	10	6	6	5	4	3	9	11	6	5	2	3
Fourth Grade ELA	10	6	10	7	13	10	4	4	12	5	5	5
Fifth Grade ELA	4	5	7	11	4	6	4	2	7	11	5	5
Sixth Grade ELA	7	2	5	9	1	1	5	4	4	6	9	2
Seventh Grade ELA	7	8	12	2	6	4	2	8	2	1	2	3
Eighth Grade ELA	8	2	3	11	3	12	6	9	11	3	2	5
Third Grade Math	9	3	9	7	7	4	7	12	3	5	2	5
Fourth Grade Math	12	12	8	9	10	4	5	4	7	7	4	3
Fifth Grade Math	6	6	11	6	2	3	3	1	1	2	2	3
Sixth Grade Math	1	3	4	3	3	2	1	8	6	2	1	1
Seventh Grade Math	12	3	2	3	4	6	3	15	5	3	1	6
Eighth Grade Math	5	3	2	5	7	3	5	2	7	10	8	5
Fourth Grade Science	6	11	10	4	1	5	3	2	3	2	1	3
Eighth Grade Science	12	1	2	3	3	5	1	1	1	2	1	3
Fifth Grade Social Studies	6	4	6	12	4							
Eighth Grade Social Studies	2	1	1	1	1							
Sum of Ranks	117	76	98	98	73	68	58	83	75	64	45	52
Mean	7.31	4.75	6.13	6.13	4.56	4.86	4.14	5.93	5.36	4.57	3.21	3.71



Common Core

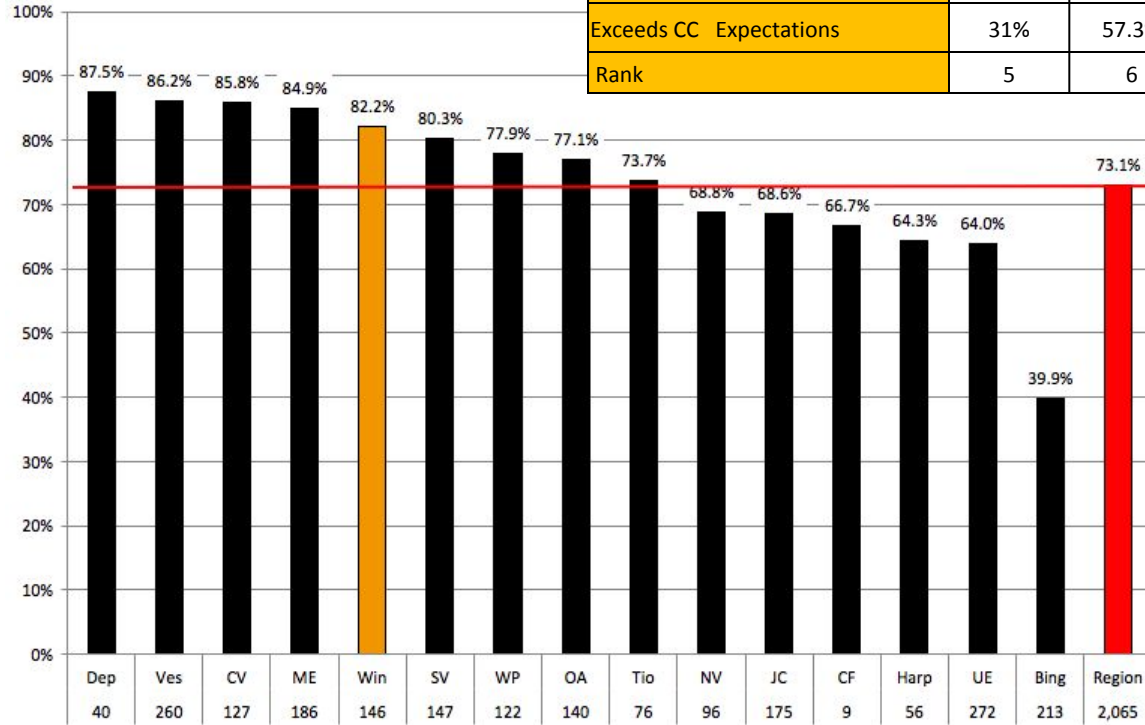
Level	Description	Scored
1	Does not demonstrate knowledge & skills for Level 2	0 – 54%
2	(Safety Net) – Partially meets Common Core expectations	55 – 64%
3	Partially meets Common Core expectations	65 – 79%
4	Meets Common Core expectations	80 – 84%
5	Exceeds Common Core expectations	85 – 100%

Regents

Level	Description	Scored
1	Does not meet proficiency	0 – 54%
2	Partially meets proficiency	55 – 64%
3	Meets proficiency	65 – 84%
4	Mastery	85 – 100%

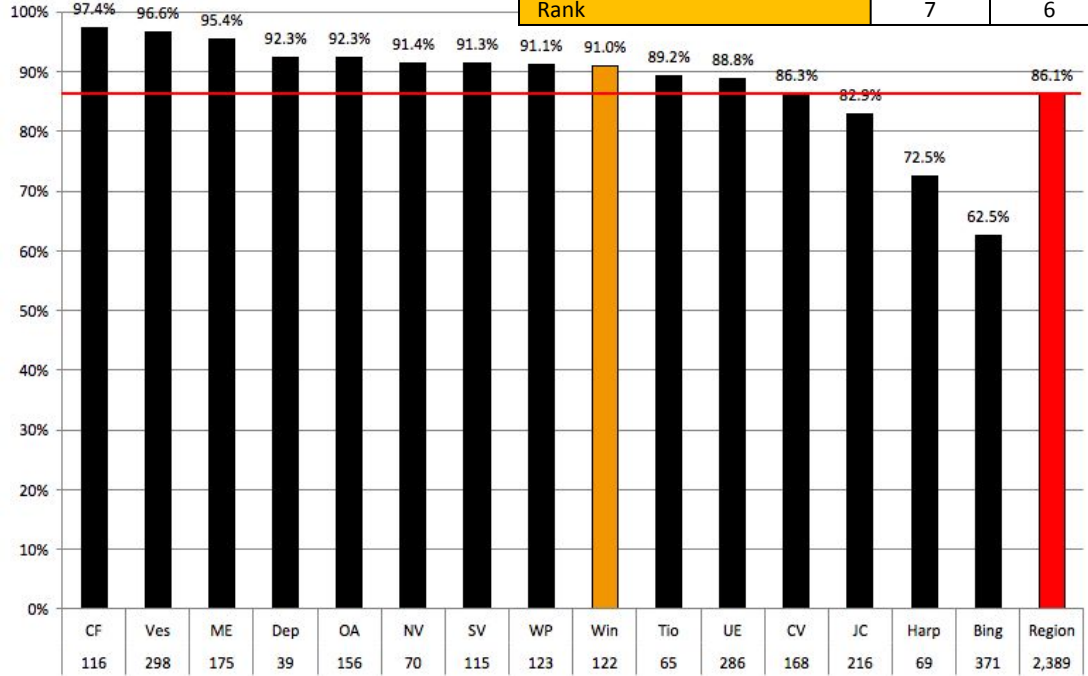


ELA CC	13-14	14-15	15-16	16-17	+ or -
Meets CC Expectations	56%	75.6%	75.0%	82.2%	7.2%
Exceeds CC Expectations	31%	57.3%	53.7%	62.3%	8.6%
Rank	5	6	9	5	4



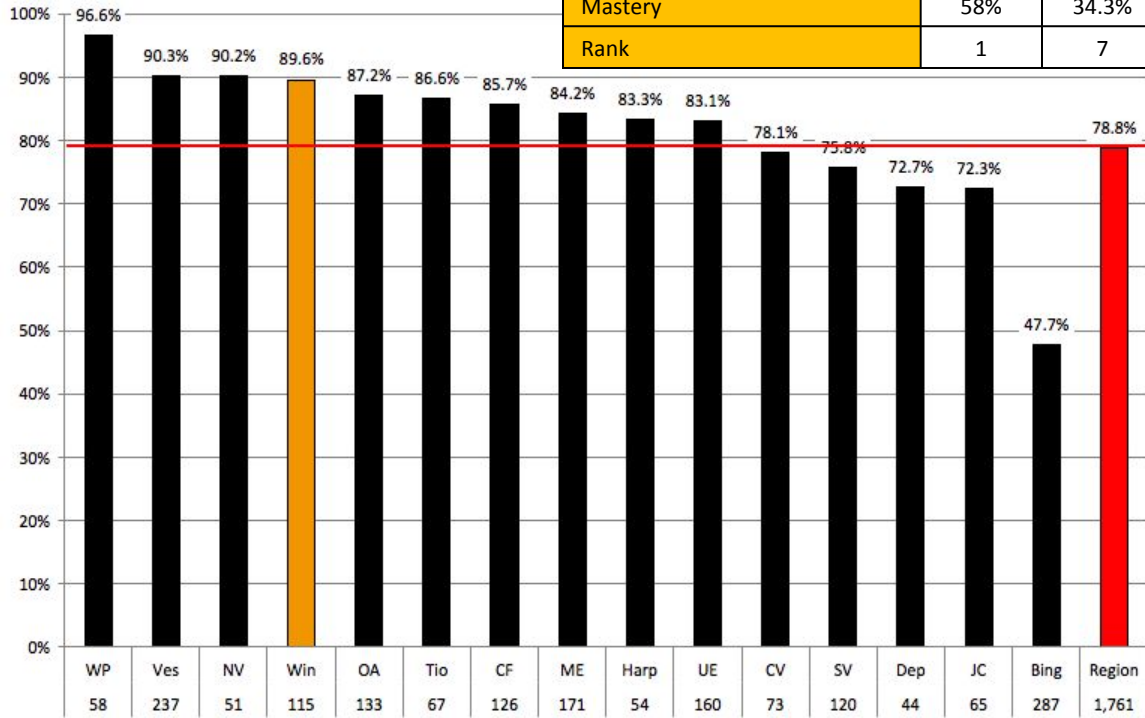
Windsor Central School District – Home of the Black Knights

Living Environment	13-14	14-15	15-16	16-17	+ or -
Proficiency	92%	94.7%	99.6%	91.0%	(8.6%)
Mastery	46%	56.7%	50.7%	40.2%	(10.5%)
Rank	7	6	1	9	(8)



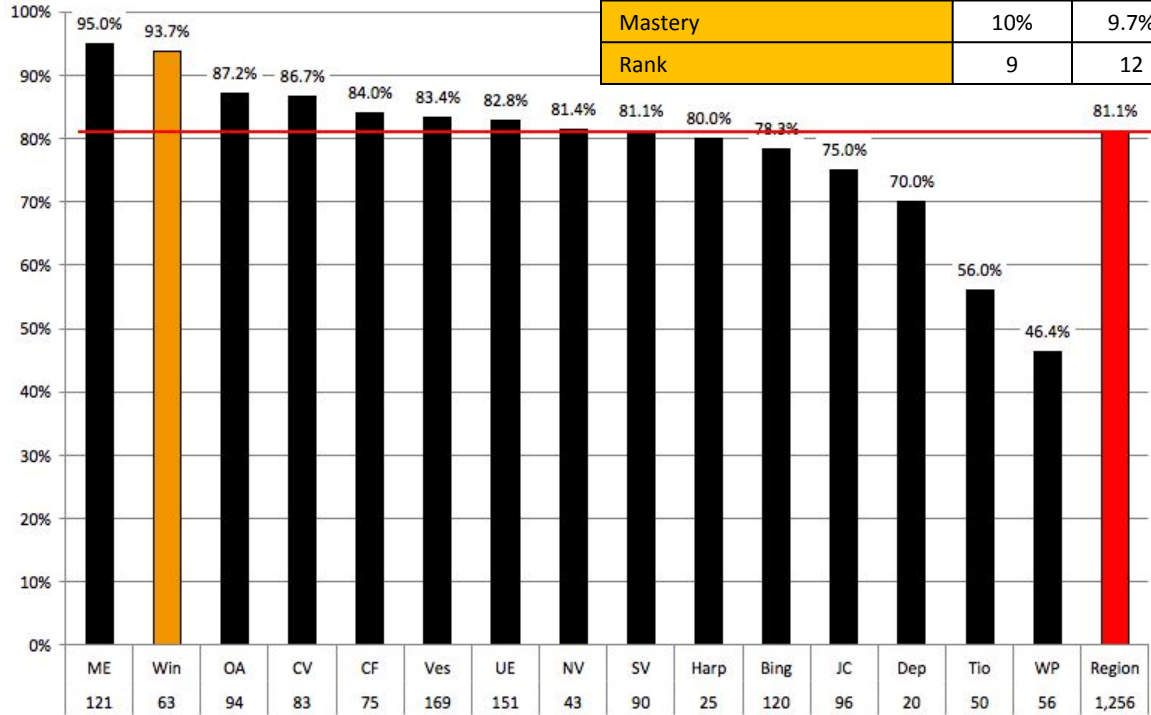
Windsor Central School District – Home of the Black Knights

Earth Science	13-14	14-15	15-16	16-17	+ or -
Proficiency	94%	87.2%	97.6%	89.6%	(8.0%)
Mastery	58%	34.3%	88.1%	43.5%	(44.6%)
Rank	1	7	1	4	(3)



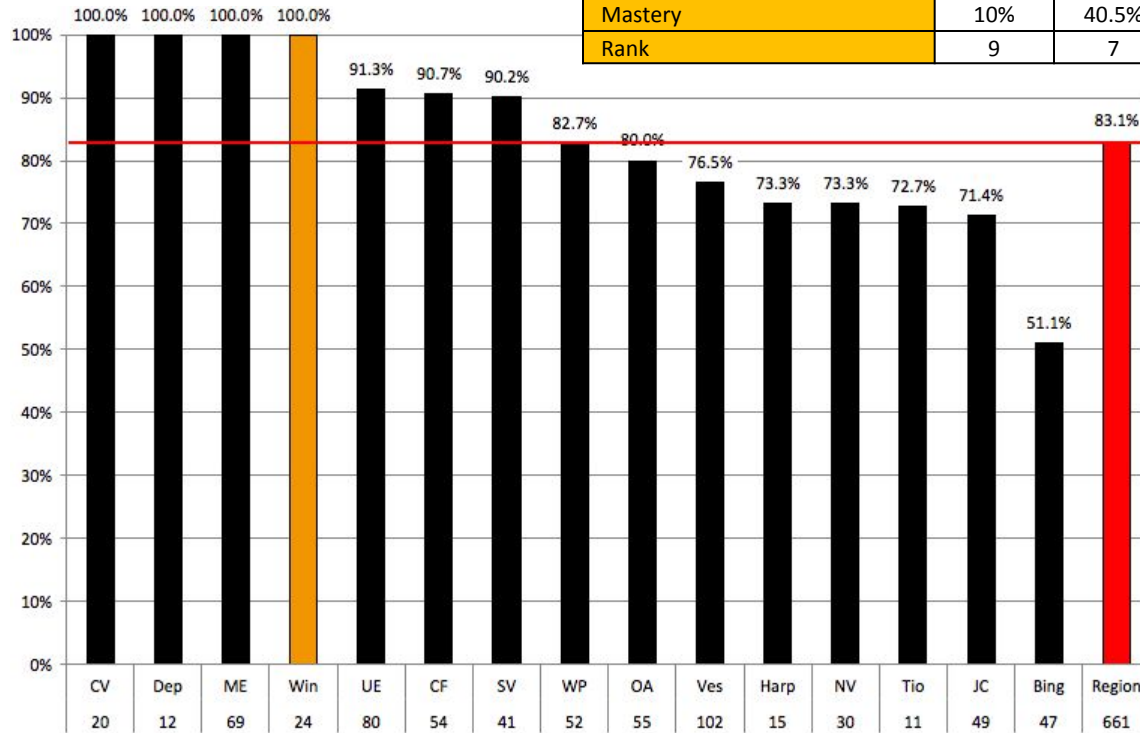
Windsor Central School District – Home of the Black Knights

Chemistry	13-14	14-15	15-16	17-18	+ or -
Proficiency	77%	66.6%	96.8%	93.7%	(3.1%)
Mastery	10%	9.7%	23.4%	19.0%	(4.4%)
Rank	9	12	1	2	(1)



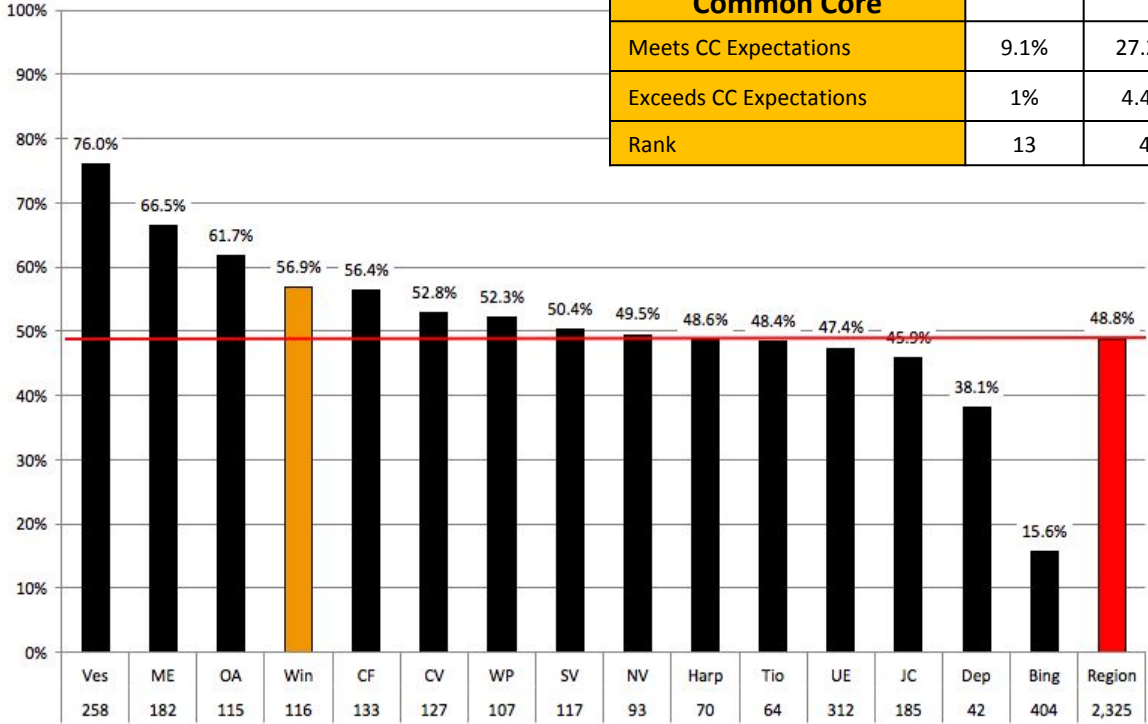
Windsor Central School District – Home of the Black Knights

Physics	13-14	14-15	15-16	16-17	+ or -
Proficiency	77%	91.9%	90.2%	100.0%	9.8%
Mastery	10%	40.5%	41.5%	54.2%	12.7%
Rank	9	7	5	1	4

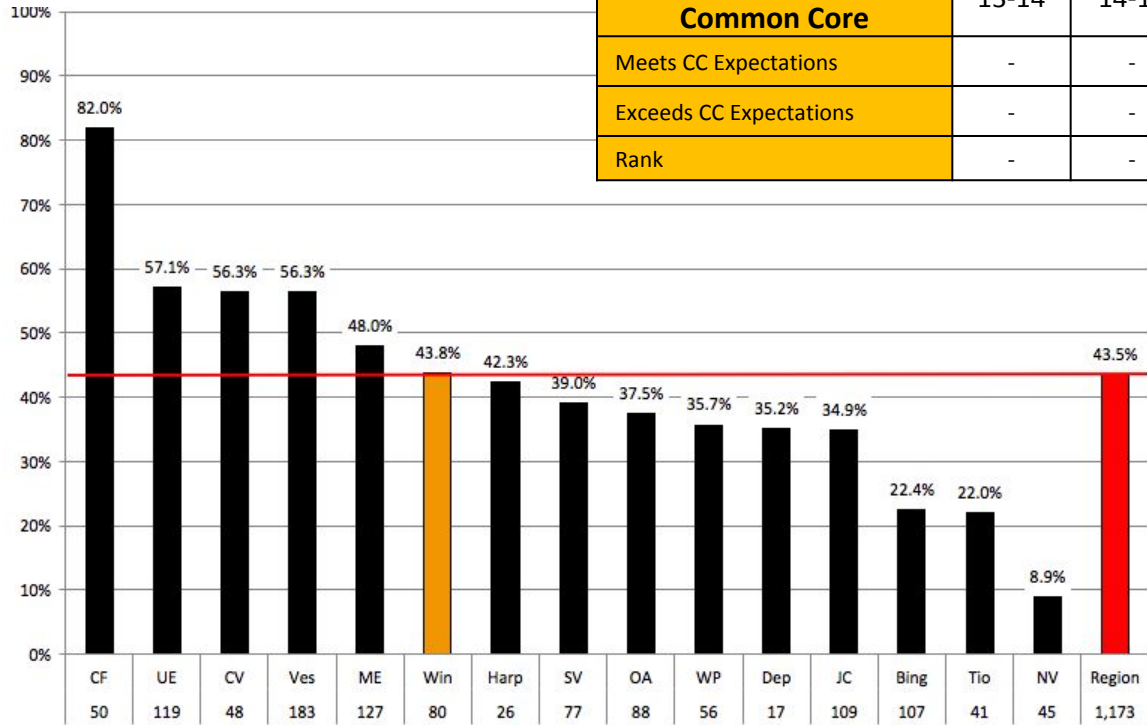


Windsor Central School District – Home of the Black Knights

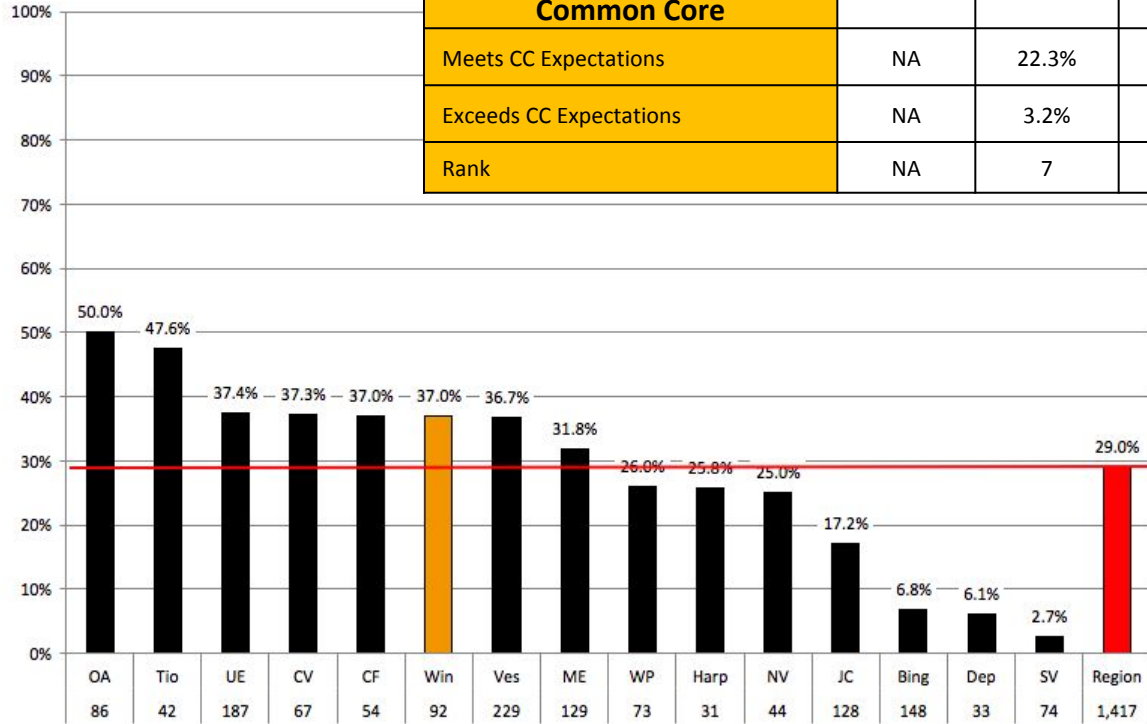
Algebra I Common Core	13-14	14-15	15-16	16-17	+ or -
Meets CC Expectations	9.1%	27.2%	52.1%	56.9%	4.8%
Exceeds CC Expectations	1%	4.4%	2.9%	30.2%	27.3%
Rank	13	4	3	4	(1)



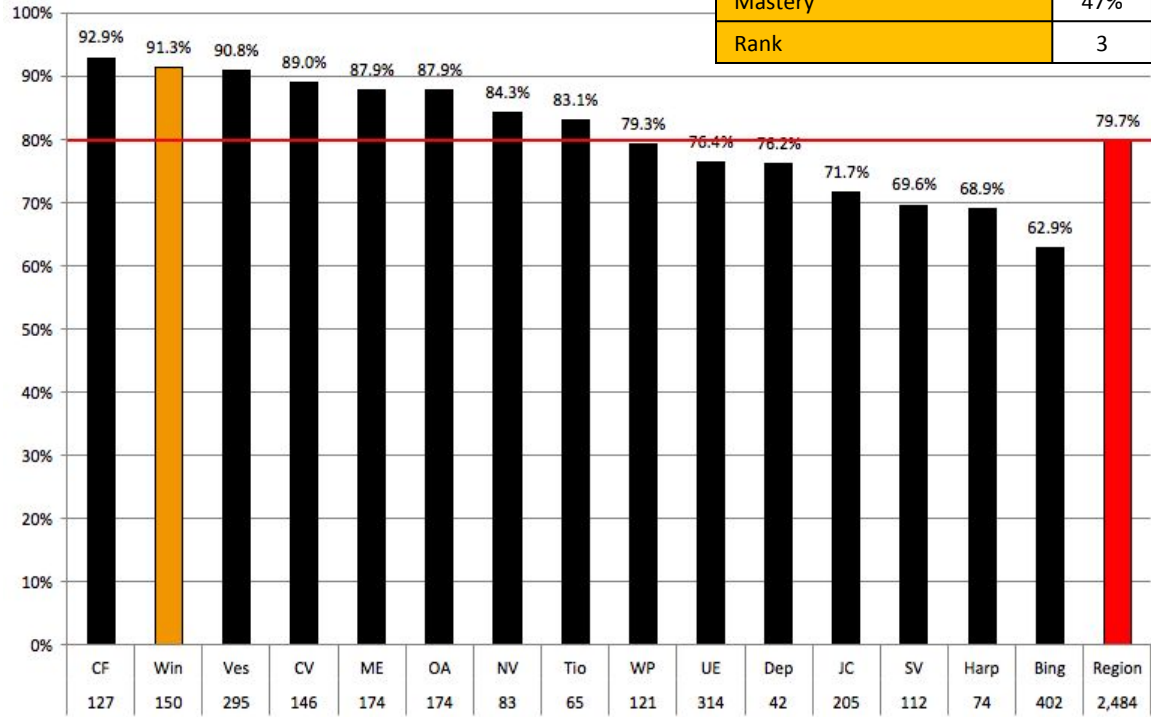
Algebra II Common Core	13-14	14-15	15-16	16-17	+ or -
Meets CC Expectations	-	-	-	43.8%	NA
Exceeds CC Expectations	-	-	-	6.2%	NA
Rank	-	-	-	6	-



Geometry Common Core	13-14	14-15	15-16	16-17	+ or -
Meets CC Expectations	NA	22.3%	30.0%	37.0%	7.0%
Exceeds CC Expectations	NA	3.2%	11.1%	10.9%	(0.2%)
Rank	NA	7	6	5	1

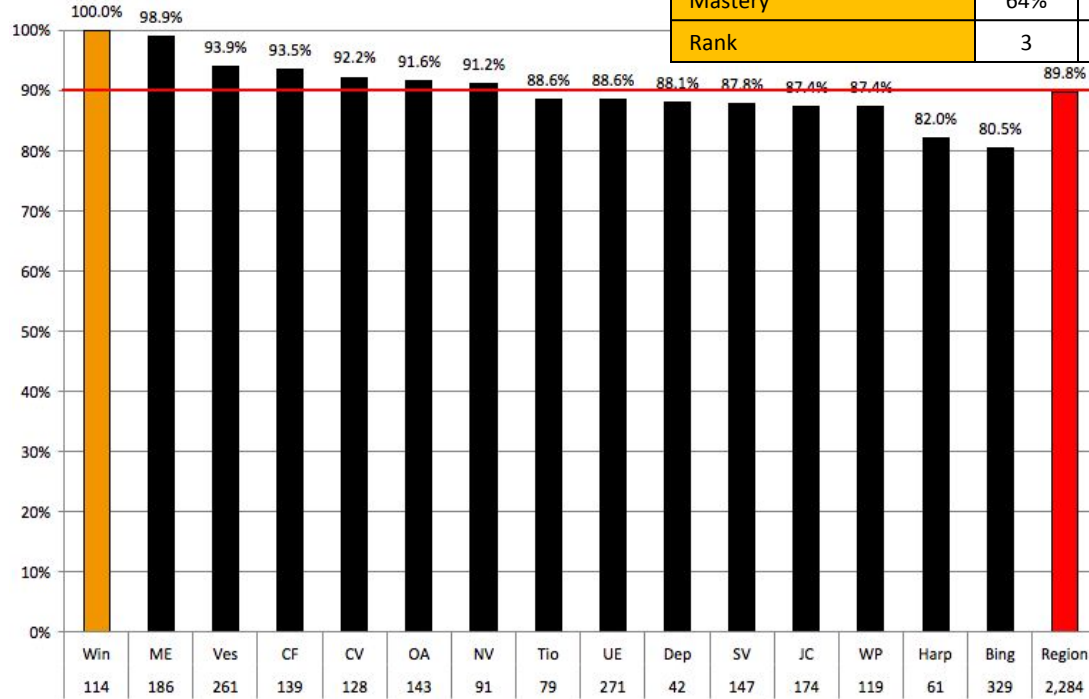


Global History 10	13-14	14-15	15-16	16-17	+ or -
Proficiency	84%	86.6%	92.0%	91.3%	(0.7%)
Mastery	47%	52.1%	54.4%	54.0%	(0.4%)
Rank	3	4	2	2	-



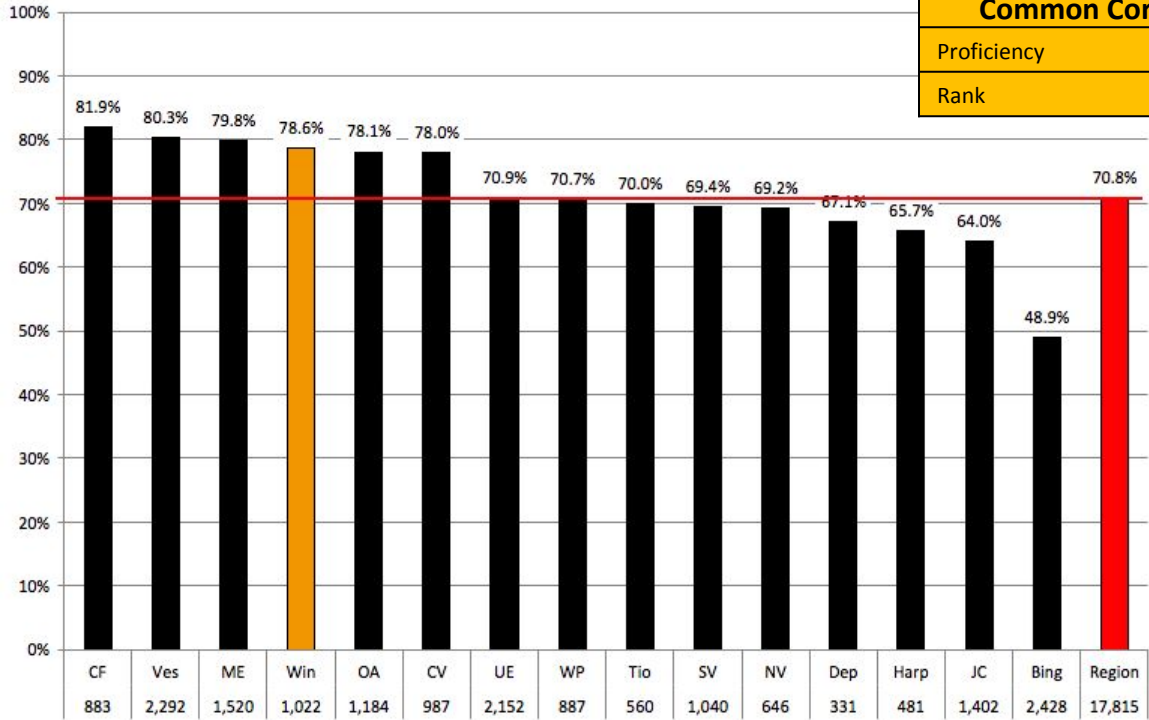
Windsor Central School District – Home of the Black Knights

US History 11	13-14	14-15	15-16	16-17	+ or -
Proficiency	96%	94.7%	96.0%	100.0%	4.0%
Mastery	64%	74.4%	74.6%	67.5%	(7.1%)
Rank	3	3	2	1	1



Windsor Central School District – Home of the Black Knights

ALL Regents & Common Core	15-16	16-17	+ or -
Proficiency	76.5%	78.6%	2.1%
Rank	2	4	(2)



Windsor Central School District – Home of the Black Knights

Regents/Common Core Mean Rankings

NYS Regents/CC	11-12 Rank	12-13 Rank	13-14 Rank	14-15 Rank	15-16 Rank	16-17 Rank
ELA Common Core			5	6	9	5
Living Environment	8	7	7	6	1	9
Earth Science	12	3	1	7	1	4
Chemistry	10	9	9	12	1	2
Physics	13	14	11	7	5	1
Geometry Common Core				7	6	5
Integrated Algebra I Common Core			13	4	3	4
Algebra II Common Core						6
Global History 10	5	8	3	4	2	2
US History 11	2	3	3	3	2	1
ELA 11 - June	3	7	10	13		
Integrated Algebra I	5	8	4	3		
Geometry	4	10	5	7		
Algebra II - Trigonometry	3	13	3	4	11	
Sum of Ranks	65	82	74	83	41	39
Mean	6.50	8.20	6.17	6.38	4.10	3.90



Windsor Central School District – Home of the Black Knights

NYS Assessments	12-13 Rank	13-14 Rank	14-15 Rank	15-16 Rank	16-17 Rank
Third Grade ELA	11	6	5	2	3
Fourth Grade ELA	4	12	5	5	5
Fifth Grade ELA	2	7	11	5	5
Sixth Grade ELA	4	4	6	9	2
Seventh Grade ELA	8	6	1	2	3
Eighth Grade ELA	9	11	3	2	5
Third Grade Math	12	3	5	2	5
Fourth Grade Math	4	7	7	4	3
Fifth Grade Math	1	1	2	2	3
Sixth Grade Math	8	6	2	1	1
Seventh Grade Math	15	5	3	1	6
Eighth Grade Math	2	7	10	8	5
Fourth Grade Science	2	3	2	1	3
Eighth Grade Science	1	1	2	1	3
ELA Common Core		5	6	9	5
Living Environment	7	7	6	1	9
Earth Science	3	1	7	1	4
Chemistry	9	9	12	1	2
Physics	14	11	7	5	1
Integrated Algebra I Common Core		13	4	3	4
Geometry Common Core			7	6	5
Algebra II Common Core					6
Global History 10	8	3	4	2	2
US History 11	3	3	3	2	1
ELA 11 - June	7	10	13		
Integrated Algebra I	8	4	3		
Geometry	10	5	7		
Algebra II - Trigonometry	13	3	4	11	
Sum of Ranks	165	153	147	86	91
Mean	6.88	5.88	5.44	3.58	3.79



Windsor Central School District – Home of the Black Knights